

Lymm Life

Magazine

ISSUE 306 | JANUARY 2025
DELIVERED FREE TO 5000 HOMES

Celebrating 25 years of free community news



urban

BUILDING PROJECTS LTD

**Extension &
Building Renovation
Specialists**

Tel: 01925 730888

www.urbanbuildingprojects.co.uk

Spirit of Christmas past alive and kicking

Centre pages

Lymm Eye Clinic

Local, professional eyecare
when you need it

No referral necessary,
book your appointment online

www.lymmeyeclinik.co.uk

Tel: 07498 456312
1 Birchbrook Road, Lymm



**Chambers
Fletcher
Solicitors**

Family Law & Divorce
Residential Property
Commercial Property
Wills, Trusts & Probate

01925 359005

www.chambersfletcher.co.uk



**LYMM
PARISH
COUNCIL**

Approved by Lymm Parish
Council as the official
magazine for Lymm

URBAN
GARDEN PROJECTS
**TRANSFORMING
OUTDOOR SPACES**

PATIOS
DECKING
DRIVEWAYS
FENCING
MAINTENANCE



Phil McGuinness

01925 599 544

www.urban-garden-projects.co.uk

Regular news updates at www.warrington-worldwide.co.uk

Editor's Comment



Editor
Gary Skentelbery

Production
James Bryan

Advertising
James Balme
Telephone
01925 631592

Editorial
01925 623633

Email
info@lymmlife.co.uk

Websites
www.lymmlife.co.uk
www.culchethlife.com
www.frodshamlife.co.uk
www.warrington-worldwide.co.uk
www.warrington.tv

Address
New Media Centre
Old Road Warrington
WA4 1AT

Lymm Life is published monthly by Orbit News Ltd.

The contents of this magazine are fully protected by copyright and nothing may be reprinted or reproduced without prior permission of the publishers.

The publishers are not liable for any statement made or opinion expressed by third parties in this publication.

Printed by TwentyFourSeven

WHILE it was good to see the ongoing road works on Pepper Street suspended over the Christmas period, I am sure many will be disappointed to hear that they could be extended for up to eight weeks in the new year.

The complex procedure of replacing the sets has been delayed due to complications and poor weather.

During the works car parking in the village became an even bigger nightmare, especially when the Pepper Street car park was out of use.

Popping into the village to complete a simple task became a nightmare, with literally nowhere to park on occasions.

I experienced it first hand while trying to take a photograph of the Rotary Santa on Lymm Cross.

There simply wasn't a single space left on either village car park and no off-street parking.

My persistence eventually paid off by driving around the village

twice and I did manage to find a space but it certainly put me off making a return visit while the works are ongoing.

I am sure some businesses will have felt the impact of the works and will be dreading the news that they will be extended during January and February – the traditionally quiet trading times of the year after the Christmas rush.

With businesses also facing increased overheads it could be tough trading times ahead in the village centre.

Let's hope the works can be completed ahead of the eight-week extension, although the weather for January and February is unlikely to be ideal.

On a more positive note well done to everyone involved in organising the annual Lymm Dickensian Festival.



Scan for all the latest news



I am told the parade was bigger than ever and that the village centre was packed with visitors which is good to hear.

Let's hope the local business community felt the benefit ahead of the likely tough trading times in the new year.

Here at Lymm Life we would like to wish all our advertisers and readers a happy, healthy and prosperous New Year.

Deadline for the February issue of Lymm Life is January 7

N & J STANHOPE

Coal and Log Supplies

Smokeless Fuel • Kiln-dried Logs

Coal Bunkers

Caravan Storage

Fresh Bacon and Eggs

Open 6 Days. Closed Sunday

**Broomedge Farm
Burford Lane, Lymm WA13 0SE**

**Tel: 752830
Mobile: 07979 785 421**

Proud partner of the St Rocco's 2025 Christmas Tree Collection

Your Primrose Christmas tree can be collected and recycled in return for a donation to St Rocco's Hospice.

Trees will be collected on 11th January.

Book your collection online at

www.stroccos.org.uk

Or call 01925 579 211



Warrington Road, High Legh,
Cheshire WA16 0SQ.
01925 752635



PRIMROSE HILL
NURSERIES

Est. 1935

Open to the Public and Trade:
MON-SAT 8.30am-5pm
SUN 10am-4pm

Dawn of a new era at High Legh Community Observatory

A dawn of a new era has started at High Legh Community Observatory following a much needed refurbishment last summer.

Founded in 2013, and operating as a functioning observatory since 2014, the High Legh Community Observatory (HLCO), has established itself as an integral part of village life, both at the observatory site (Abby Leys Farm), and via monthly presentations at St John's Church Hall.

A mixture of professional and amateur astronomers deliver a range of topics, intended to share some of the wonder and majesty of the Universe with the wider community in and around High Legh.

Spokesperson Chris Digata said: "Over the years we have covered everything from Life and Death



of Stars, through to Black Holes and the remarkable images being returned by the James Webb Space Telescope.

"Time however, has been unkind to the observatory with the forced neglect of the Covid years plus two years of extraordinarily bad and windy weather, resulting in the facility looking a little dog-eared by the end of 2023.

"We also started to have persistent technical issues with the main telescopes.

"Our original project engineer, who actually supervised the design and building of the entire observatory and to whom we are tremendously grateful, recently decided it was time to step back.

"Luckily, the arrival on scene of a new project engineer, who was full of enthusiasm, boundless energy and ideas, has propelled the observatory into the dawn of a new era, within which a whole raft of improvements and repairs to the structure of the site and its telescopes will expand the abilities and reach of HLCO immeasurably.

The HLCO Steering Group, who have held the project together for over 10-years, are currently involved in training on the new telescopes, and will hopefully be

ready to unleash these superb instruments onto the general public.

"If you are interested in getting involved, please visit our website for details of our activities both at the observatory and via our month presentations: -

<https://highlegh-communityobservatory.co.uk>

If the weather permits there are observing sessions open to the public on a Friday evening.

Opening times and location details can be found on the Observatory page.

The observatory also opens on the first Sunday morning of the month from 10am until 1pm in support of Abbey Leys Farmers' Market – again, weather

permitting.

HLCO holds meetings on the second Thursday of each month in St John's church room. Talks in astronomy and space research are given by invited experts or members of the HLCO team themselves. A small charge is made for these events.





LITTLER'S

EST. 1957

VIDEO TAPE CONVERSIONS

SAVE YOUR IMPORTANT FILMS & MEMORIES

We transfer a wide range of tape types to DVD, USB & even Cloud!

Simply drop in your tapes and we'll call or email when they're ready!

We currently transfer camcorder, VHS, Video8, Hi8, Digital 8, Cinefilm VHS, DV, Mini DV, HDV & Betamax.

Leave it to a local, family firm to protect your films and tapes for years to come!





(01925) 814711

298-300 Manchester Rd, Warrington, WA1 3RF

WWW.LITTLERSTV.COM

MAKES A GREAT GIFT!

BULK RATES AVAILABLE

Professional tree services

Free Quote

- Domestic
- Commercial
- Site Clearance

- Vegetation management
- Stump grinding
- Re-planting
- £10m public liability insurance



Beechwood Industries

www.beechwoodindustries.co.uk

For more information, please call us on

01925 860544








What's On in conjunction with Lymm Parish Council



LYMM PARISH COUNCIL

Next meeting Tuesday January 14th, 7:30pm
Lymm Parish Hall
Check www.lymmparishcouncil.gov.uk for details.

LYMM THURSDAY EVENING BRIDGE CLUB

Lymm Village Hall every Thursday 7pm
Details: 07708 172015

MAPLE LODGE ART GROUP

Meet each Wednesday 9.30am - 11.30pm
Oughtrington Community Centre, Lymm
Details: 01925 755926

ROTARY CLUB OF LYMM

Meets at Warburtons Parish Rooms on the 2nd and 4th Wednesday each month at 8pm
Contact 01925 919053

LOVING HEARTS & HANDS

Knitting for charity at Lymm Methodist Church, 2nd and 4th Thursday each month. 1.30pm - 3pm. Details: 01925 753298

LUNCH AT THE BROW

Eagle Brow Methodist Church
2nd Friday in the month
Light lunches 12 noon till 1.30pm.
All proceeds to The Y Project Room at The Inn

GARDENING CLUB

Meet Third Wednesday of the month
Lymm Baptist Church, Higher Lane. 7.30pm
Visitors welcome. £2 includes tea and cake

LYMM FLORAL ART GROUP

Lymm Village Hall
Third Monday of the month (except August and December) at 7.30pm. Visitors most welcome. Contact: 07876 176501
lymmfloralart.org.uk

LYMM PHOTOGRAPHIC SOCIETY

Every 2nd and 4th Wednesday (ex Aug), 7.30pm
Spread Eagle pub, Eagle Brow.
See our rolling display in Lymm Library
Details: www.lymmphtosoc.org.uk

LYMM WINE AND BEER CIRCLE

3rd Wednesday of the month, 8pm
The Spread Eagle Hotel
Details: 01925 756444

LYMM CONCERT BAND

Rehearsals every Thursday evening
United Reformed Church, 8pm.
Details: 01925 752934

LYMM WI

Every second Wednesday, 2-4pm at Lymm Youth and Community Centre. Visitors welcome.

LYMM AND DISTRICT MIXED VOICE CHOIR

Every Wednesday 7.30 Lymm Methodist Church. Contact 01925 601664.
cath@cstones.co.uk

PROBUS CLUB OF LYMM

A small, friendly social club for retired people. Meets on second and fourth Tuesdays at 2:15pm.
Details: www.LymmProbus.club

LYMM DINGLE PROBUS CLUB

A friendly busy social club for retired men. Meets on alternate Thursday afternoons at Lymm Baptist Church.
Details: www.lymmdingleprobus.club
Club secretary 01925 759995

FRIENDS OF LYMM LIBRARY CRAFT GROUP

Lymm Sanctuary Hub
Fridays 1.30-3.00pm
Details: 01925 754016

HEATLEY WI

Meets the second Thursday of each month at Oughtrington Junior School, 7pm
Visitors welcome. Details: 01925 752014

LYMM & THELWALL U3A

Speaker meeting 3rd Thursday of the month (excluding August & December) at Thelwall Parish Hall 10.00am. Prospective members welcome.
www.u3asites.org.uk/lymm-thelwall/home
Contact: enquiries@lymmthelwallu3a.org.uk



LYMM PARISH COUNCIL

Tuesday January 14th, 7:30pm
See parish council website for details.

Pepper Street road works suspended but extended in new year



CONTROVERSIAL road works on Pepper Street at Lymm will be extended by up to eight weeks in the new year following delays with resurfacing works involving stone setts.

But works will be suspended over the Christmas period following local concerns regarding car parking issues on the Pepper Street village car park, resuming on January 20.

It meant the car park was available for the annual Lymm Dickensian Festival.

Local Cllr. Graham Gowland commented "It's disappointing the resurfacing works have taken so long, but with issues with some of the materials and the cold weather, it's good to see the council taking into account the busy Christmas period, especially with Dickensian Day."

"Opening up the Pepper Street car park will help, and hopefully

the full eight-week period won't be needed in the new year – it's been a project and a half!"

Pepper Street sits within a conservation area in Lymm village centre, contains a sett paved area, which were in poor condition, rough and noisy to drive on and difficult and expensive to maintain.

In addition, existing inspection chamber covers and gully gratings on the street are of an older style and unsuitable for modern traffic.

It was, therefore, necessary to carry out repair works to this part of the street, to prevent further deterioration and ensure the longevity of the surface.

Double yellow lines set to be introduced to tackle parking problems

DOUBLE yellow lines are set to be introduced on Statham Avenue, Lymm, to tackle parking problems outside a care home.

Overflow car parking from the Minerva Care Home on the site of the former Lymm Hotel on Whitbarrow Road is said to be causing visibility issues for vehicles entering and exiting the site and the nearby Trans Pennine Trail car park.

Warrington Borough Council has given notice it proposes to make an Order under Sections 1, 2, 4, 32, 35 and Part IV of Schedule 9 to the Road Traffic Regulation Act 1984 and of all other enabling powers. The effect of the Order will be as follows: –

1. The Borough of Warrington (Traffic Management) (Civil Enforcement) Consolidation (Amendment No. 4) (Part 1) Order 2019 is revoked in so far as it relates to Schedule 2, Article (g) and the addition to Schedule 3 – No waiting at any time – Statham Avenue (Both Sides) From its junction with Whitbarrow Road, for a distance of 10 metres, in a westerly direction.

The statement of reasons given by the council says: "As part of the former Lymm Hotel site redevelopment and replacement with a residential care home and apartment block, visitor vehicle overflow may result in vehicles parking on both sides of Statham Avenue and reducing visibility for vehicles entering and exiting not only the new development but also the Trans Pennine Trail car park.

G.P. BROADSMITH & SON
POOL FARM, LYMM
YOUR LOCAL DAIRY Est. 1932

Fresh, quality milk delivered to your doorstep.

A variety of local produce. *Everyone at the farm would like to congratulate Gary and the team on 25 years of Lymm Life!*

Early morning deliveries.

Call 757655 or email milk@broadsmith.com for our prices!

G.P. BROADSMITH & SON
POOL FARM, POOL LANE,
STATHAM, LYMM, WA13 9BW
TEL: 01925 757655

Call us on: 01942 607250
www.elbfireplaces.co.uk
70 Twist Lane, Leigh, Lancashire WN7 4DP

Fire Surrounds, Stoves, Gas & Electric Fires

Established 40 YEARS

No need to change your carpet - made to measure fireplaces

Over 75 displays over 2 floors

Live wood burning stove on display

Is your conservatory too cold to use in Winter?
Why not install a stove?

ESTHER MCVEY MP
Member of Parliament for Tatton

I hold regular constituency surgeries around the area.

To make an appointment please call 01625 529922 or email officeofesthermcveymp@parliament.uk

Promoted by Angela McPake on behalf of Esther McVey MP both of 1 Canute Place, Knutsford, Cheshire WA16 6BG. Funded through the allowances made available to the Member of Parliament.



Turn your house into a home with our selection of Shutters, Blinds, Little Greene Paint and Wallpaper and Home Furnishings

Visit us today at:

4 Framingham Road, Brooklands, M33 3SH | Tel: 0161 962 7255

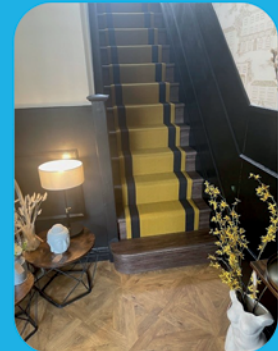
E: enquiries@inspiredbymay.co.uk | W: www.inspiredbymay.co.uk

@inspiredbymayhomefurnishings

wilde & sons

CONTRACT AND DOMESTIC FLOORING

A FAMILY RUN BUSINESS WITH OVER 25 YEARS EXPERIENCE



WE SUPPLY AND FIT HIGH QUALITY BRANDS INCLUDING KARNDUAN, ALTERNATIVE FLOORING, WESTEX AND MORE

VISIT US TODAY AT

6 EASTWAY, SALE, M33 4DX | TEL: 0161 973 7868

4 FRAMINGHAM ROAD, BROOKLANDS, M33 3SH | TEL: 0161 962 7255

E: enquiries@wildeandsons.com | W: www.wildeandsons.com | @wildeandsonsflooring

**ACCOUNTANTS IN
CULCHETH
WARRINGTON**

Are you looking for
progressive
accountancy, business
and tax advice?

Speak to one of our
experts:
01925 761 600

or visit us at:
stylesandco.co.uk

**FORWARD THINKERS.
TRUSTED ADVISORS.**



Kids Planet Day Nurseries wins 'Large Group of the Year' award

Lymm-based Kids Planet Day Nurseries has been awarded Large Group of the Year at the NMT Awards 2024.

During a time when recruitment remains a challenge for the early years sector, the judges praised Kids Planet's investment in its staff through the many career pathways made available and the mentorship provided along the way.

They remarked that Kids Planet's impressive quality of care reflects the group's passion for delivering early years education across the country and for generations to come.

Clare Roberts, Founder and

CEO of Kids Planet Day Nurseries, said: "We are thrilled to have been named Large Group of the Year at the NMT Awards. This achievement reflects the dedication and passion of every single member of our team, and I couldn't be prouder of the incredible work they do each day."

"Since founding Kids Planet 16 years ago, our core values have always been at the heart of everything we do. A heartfelt thank you and congratulations to

everyone who has been part of this journey and continues to contribute to our family group today. I am excited about what the future holds for Kids Planet!"

Founded in 2008 by Clare Roberts and her father John Hoban, initially with two settings in Warrington and Widnes, Kids Planet has grown significantly to 220 nurseries, with a mission to deliver the highest quality of childcare. With Clare as CEO and her sister Lucy Kaczmaraska as operations director, Kids Planet remains a family-run and family-focused business.

MAXIMISE YOUR SPACE WITH £600 OF FREE STORAGE

Offer ends 31st Jan 2025

*Terms & Conditions apply

DREAM DOORS®
NEW LIFE FOR OLD KITCHENS

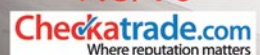


- Up to 50% less than a new fully fitted kitchen
- Replacement kitchen doors
- Cost effective made to measure solution
- Worktops and appliances
- Quick installation in 2-3 days by local professionals

MODERN CLASSIC
TRADITIONAL CONTEMPORARY

92 Knutsford Road
Warrington, WA4 2PJ
warrington@dreamdoors.co.uk

9.8/10



Call now
for a
free estimate:

01925
211308



Domino's serves up 25 new jobs with new store opening



DOMINO'S has officially opened its latest new store in Pepper Street, Lymm, bringing 25 new jobs to the area, including pizza chefs, in store team members and delivery drivers.

The store is open 7 days a week from 11am – 11pm serving up freshly prepared Domino's favourites, including Pepperoni Passion and Vegi Supreme alongside new additions such as the recently launched The Festive One and Mac 'n' Cheese.

The Lymm store opening forms part of Domino's largest franchise partner, SK Group's ambition to open ten new stores ahead of Christmas, as it prepares for a busy festive season. Collectively, the new stores will provide 250 jobs nationwide.

Ricky Kandola, Operations Director at SK Group said: "We are delighted to launch our new store in Lymm, delivering 25 new jobs to the local area. Now even more pizza fans can experience our

delicious menu at home, whilst our modern new store also offers great collection deals for those looking for a convenient treat. We're really looking forward to settling in and building strong lasting relationships with the local community, helping to deliver a better future through food people love."

The store held an exciting grand opening ceremony where local community members and customers were invited to meet the new store team, and of course, try some freshly prepared Domino's pizza. The store gave out free personal pizzas with special golden postcards on opening day, as well as a free cookie with every collection order during opening week.

Blue bins removed from village car park due to misuse

COMMUNITY blue bins on a village car park at Lymm have been removed by Warrington Borough Council due to misuse by fly-tippers.

The industrial-size bins on the Davies Way car park were often left overflowing with waste scattering across the car park.

Now the borough council has decided to remove the eyesores after warning: "We're removing the blue recycling bins at Davies Way, Lymm from 19 November."

"People are putting the wrong items in, contaminating the bins so contents can't be recycled."

"Lymm Parish Council also regularly has to remove fly-tipped items. The clothes and shoe banks will remain on site."

Local Cllr. Ian Marks commented: "A few months ago the Davies Way car park was in a dreadful state from illegal dumping of all sorts of

rubbish. A meeting was held on site attended by myself, Parish Council staff and Warrington Council officers. The Parish environment team were having to spend far too much time clearing the area up.

"At the meeting we agreed a number of actions to improve the situation which would also free up a little more space for parking. We discussed the large blue bins and the Warrington officers pointed out that most if not all residents should have their own bin or access to one. There should be no need for a communal bin and if they needed more capacity then an extra bin could be obtained from the Council.

"It is not clear who is responsible for this tipping. People don't always like change but to help keep our car park tidy I support the Council's action."

Your pet questions answered

By Dr Rachel Dean, Burford Lane Vets

How can I keep my pet warm and comfortable during January's chilly weather?

January can be one of the coldest months, so ensuring your pet stays cosy is essential.

Provide your pet with a warm, draught-free area to rest. For cats and dogs, a bed with extra blankets can help retain heat. If using a thermal pad or other heat source, ensure it isn't in direct contact with your pet's skin – ideally place it underneath a blanket. If their sleeping spot is near a door or window, move it to a warmer location.

For outdoor pets like rabbits or guinea pigs, ensure their hutch is well-insulated and raised off the ground to prevent dampness. Use plenty of bedding such as straw or hay, and consider covering the hutch with a weatherproof cover at night. Bringing them indoors during particularly cold spells can make a big difference.

If your dog is short-haired or small, they may benefit from a winter coat for outdoor walks.

Should I make any changes to my pet's diet in winter?

Winter can increase your pet's energy needs, especially if they spend time outdoors.

Dogs and cats may require slightly more food if they're active outdoors to maintain their body temperature. However, activity levels will usually reduce during winter and we may need to reduce their food intake to prevent weight gain. Monitor your pet's weight and adjust their portions accordingly.

For outdoor pets like rabbits and guinea pigs, ensure they always have access to fresh hay and high-quality food. Their bodies burn more calories to stay warm, so they might need additional portions in winter. Always provide fresh water and check regularly to ensure it hasn't frozen.



Are there any January-specific health risks I should watch out for?

Antifreeze is highly toxic to pets and can spill on roads or driveways during the winter. Unfortunately, its sweet taste can attract animals. Keep antifreeze and other chemicals well out of reach, and if you suspect your pet has ingested any, contact us immediately.

Frostbite and hypothermia can affect pets, especially those left outdoors for extended periods. Limit time spent outside during extreme cold, and always dry your pet thoroughly after walks, paying attention to their paws and ears.

Rock salt and grit used on roads and pavements can irritate your pet's paws. Wash their feet after walks to remove any residue and prevent them from licking it off.

What can I do to keep my pet active indoors during cold weather?

Cold weather can limit outdoor activities, so keeping your pet mentally and physically stimulated indoors is important.

For dogs, try interactive toys like treat-dispensing puzzles or play indoor games like hide-and-seek. Short training sessions can also be a great way to engage their mind and reinforce good behaviour.

Cats often enjoy feather wands, laser pointers or treat-hunting games. Creating vertical spaces with shelves or cat trees can encourage climbing and exploration.

Rabbits and guinea pigs can also benefit from enrichment activities. Cardboard boxes filled with hay, tunnels or safe chew toys can keep them entertained.

If you have concerns about your pet's weight or activity levels, book a check-up with us.

We're here to help ensure your pet stays happy and healthy all winter long.

A much trusted vet in Lymm



Visit burfordlanevets.co.uk/book and book online today, or call 01925 949 949

Spirit of Christmas past alive and kicking

THE spirit of Christmas past was alive and kicking at the annual Lymm Dickensian Festival.

Despite overcast skies thousands of people packed into Lymm village for the annual event which takes place every year to help boost trade in the run up to Christmas.

Visitors were able to browse a varied selection of stalls and enjoy entertainment provided by local schools, choirs, bands, dramatic groups and street entertainers.

The official opening of the Dickensian parade was led by village town crier AJ Powell and included a Santa dash through

the village by members of Lymm Runners Club.

The event also included the addition of Santa' Grotto where children could meet Father Christmas in the village hall for the first time.

Best dressed person was Rebekah Chapman, who was surprised to hear she had won from Festival Chair, Colin Oakley (pictured below).

She was up until late the night before making her costume!

Pictures: John Hopkins





Rightio Plumbers

01925 671 294

OUR SERVICES

- ✓ Boiler Breakdowns
- ✓ Boiler Servicing
- ✓ Radiators & Pipes
- ✓ Tanks & Cylinders
- ✓ Toilets & Taps
- ✓ Leaks & Bursts
- ✓ Showers
- ✓ Clearing Blockages
- ✓ Gas Safe Certified
- ✓ Pipework Replacement

We work in Lymm and all surrounding areas.

- ✓ Fast Response
- ✓ All Work Guaranteed
- ✓ Highly Experienced
- ✓ Clear Pricing

12 Month Guarantee on labour!
Excludes blockages

OAP Discount
Speak to us today!

1-2 Hour Response time!



650921

Lymm Festival

LF25

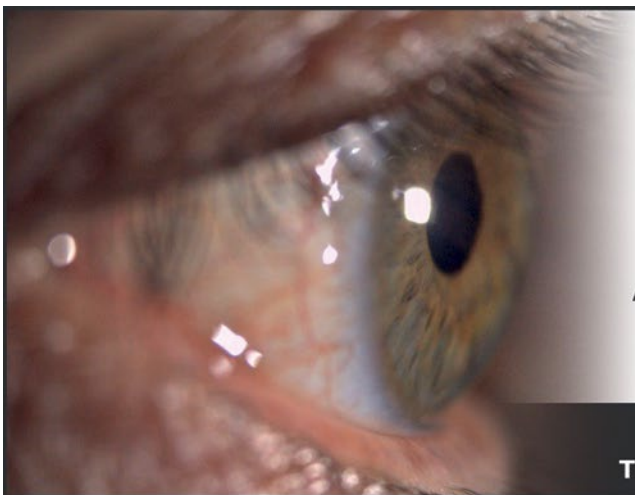
LYMM FESTIVAL 2025

19TH - 29TH JUNE

LYMMFESTIVAL.ORG.UK

FUN FOR ALL THE FAMILY

Parading at Lymm Dickensian Festival



Lymm Eye Clinic

Local, professional eyecare when you need it

A comfortable, friendly environment where all aspects of ophthalmology can be diagnosed and advised upon with the most up-to-date imaging equipment available.

No referral necessary, book your appointment online

www.lymmeyeclinik.co.uk

Tel: 07498 456312 | 1 Birchbrook Road, Lymm, WA13 9RR

A Christmas Scrooge raises over £30k at Lymm Panto

NOW in its 38th year the Lymm Panto, 'Scrooge', at Lymm Rugby Club, returned to great acclaim, raising over £30k in the process!

But it's not all about fundraising, important though this is, as Panto impresario Simon Plumb explained.

"As a registered charity, and with ambitions to build a new clubhouse, this is partly why we produce this annual extravaganza.

"However, the show also illustrates what a great time everyone has at Lymm RFC.

"This year we had seven players from all the senior teams and they were brilliant. I think the success

of the Panto and all our teams on the pitch, from the minis to the first team, are connected.

"The number of volunteers who put the effort in is massive. We seem to be getting it right on so many levels at the club and it's hugely exciting," he concluded.

The script included the usual slapstick innuendo with sell-out audiences packing into the rugby club for each performance.



PRIESTLEY
COLLEGE
WARRINGTON



Open Event

Year 10s & 11s welcome

Tue 4 Feb

Year 10s and Year 11s are welcome to join this open event to learn more about the **70+ courses** that are on offer at Priestley as well as discover more about the wide range of **Specialisms** available ranging from our **High Achievers' programme** to the **NHS Cadet scheme, Sport Academies and Journalism.**

For times - and to book your place - scan the QR code



Retrain & upskill this January!

Take the first step towards your goals
and enrol on an adult course starting
in January 2025.

Whether you want to achieve a promotion at
work, change your career, or simply try something
new for fun - we have a course to suit you.



Courses to help in everyday life

- Construction Trades
- English
- Maths
- First Aid



Courses to advance your career

- Coaching & Mentoring ilm
- Counselling cpcab
- Leadership & Management ilm



Courses to feed your creativity

- Art, Design & Crafts
- Creative Writing
- Floristry
- Novel Writing



Courses to improve your digital skills

- Computer Programming
- Digital Photography
- Essential Digital Skills
- WIX Website Design



Courses to inspire a love of languages

- Italian
- Spanish
- Sign Language



+ many more courses...

Your course could be FREE!*

Ask our Learner Services Team about the
funding options available.

learner.services@wvr.ac.uk
01925 494 400



Have you seen a course you're interested in?

Contact our Learner Services Team today for more information
or visit our website to view all of our adult courses. *Terms & conditions apply.



wvr.ac.uk/adults

01925 494 400



Warrington
& Vale Royal
College

ADULT COLLEGE

FAMILY RUN BUSINESS • ESTABLISHED IN 1998

The **M6** Bed Warehouse

THE BIGGEST BED SHOP IN CHESHIRE



ALSAGER STORE

RADWAY GREEN BUSINESS PARK - CW2 5PR



NORTHWICH STORE

WINNINGTON BUSINESS PARK - CW8 4DL

Over 160 Beds on Display • Free Delivery & Free Disposal • Instore & Online

Tel: **01270 879379** • **www.m6beds.co.uk**

115-120 The Courtyard, Radway Green Business Park, Alsager, Cheshire, CW2 5PR

Winnington Business Park, Winnington, Northwich, CW8 4DL

Teenage twins from Lymm feature in new documentary



TEENAGE twins from Lymm feature in a new three-part documentary, Dare to Defy on Prime Video.

Presented by Paralympic Gold medalist Richard Whitehead and broadcaster Adele Roberts, the documentary about inclusive sport features personal stories and inspiring encounters with individuals who dare to defy sporting expectations.

Among those featured are identical twins Oscar and Seb Spink, 14, from Lymm, who play for Manchester City in the Wheelchair Football Association's Championship League.

During the filming for the documentary earlier this year, Adele Roberts visited a City in the Community session in Manchester, where she met 14-year-old twins Oscar and Seb who live with a rare muscle wasting condition, Facioscapulohumeral muscular dystrophy (FSHD).

Showing how their condition hasn't stopped them enjoying sport, Oscar and Seb play for Manchester City in the Wheelchair Football Association's Championship League.

Their mum, Kerry Spink said: "Oscar and Seb are like many other teenagers their age – football mad and they love gaming."

"From a young age, the boys experienced hip pain and poor weight gain, as well as having a lack of facial movements, so we knew something wasn't right. It took 18 months to reach a diagnosis but eventually they were diagnosed at the age of eight with Facioscapulohumeral muscular dystrophy. It was a huge shock to all of us and that's when we found Muscular Dystrophy UK, who helped us understand the condition and enabled us to meet other families going through the same thing."

Oscar and Seb have been using electric powerchairs to get around

since they were 10 and developed a passion for powerchair football.

"This is their second season playing for Man City," said Kerry. "Of course, it's great that they're enjoying themselves, but for me the most important thing has been seeing how sport has enabled them to build relationships and be part of a team. Ensuring sport is accessible and inclusive for everyone is so important and I hope this documentary makes people realise that."

Explaining what sport means to them and what it was like to meet Adele, Seb said: "I've always loved football but couldn't play it with friends at school because I couldn't keep up. Playing wheelchair football for Man City is brilliant fun and I love it because it's really fast paced."

Oscar added: "We tried to teach Adele how to play wheelchair football, but I think she needs a lot more practice. It's not as easy as it looks!"

Highlighting the importance of accessibility and inclusivity in sport, Neeru Naik, deputy director of Care, Campaigns and Support at Muscular Dystrophy UK said: "Many people in our community tell us how important sport is in their lives. It can help to keep people active, create new friendships, and improve mental health. It's clear to see how Oscar and Seb benefit from playing wheelchair football – being able to enjoy the sport they love in an accessible, inclusive way. This is something we'd like to see more of for everyone living with a muscle wasting condition, and any form of health condition or disability."

Dare to Defy is available on Prime Video and Oscar and Seb feature in episode 2.



Chambers Fletcher Solicitors

Divorce Column

By Peter Wilkinson
Divorce Lawyer at Chambers Fletcher Solicitors

New year, New me

The festive season is traditionally associated with joy, togetherness and celebration, but for many couples Christmas can be a breaking point, so much so that the media dubs the first working Monday of January as 'Divorce Day'.

So why does Christmas spark divorces? Here are just a few of a variety of reasons:

High expectation: According to song Christmas is romanticised as the most wonderful time of the year. But for some, rather than Love Actually it's Stress Actually. When relationships are already strained, high hopes of joy, family unity and generally good cheer may not materialise and this can lead to or exacerbate tension, disillusionment and conflict within the marriage.

Financial stress: Christmas can be costly. From buying presents to going out socialising and hosting celebrations it all adds up financially and people can find themselves spending money they can't afford and incurring debt they'll struggle to repay. If there's already tension in a struggling relationship added financial strain can soon make a bad situation worse.

Forced togetherness: The festive period often involves couples spending extended amounts of time together and while this can be a positive bonding experience for some, for others it can expose or magnify discontent or other issues which have been festering in the marriage, such as an affair, communication issues, unresolved conflict, incompatibility or emotional distance.

Reflection: As a year ends people often reflect on their lives and relationships and for some Christmas can bring on the realisation that they are no longer happy in their marriage or that they no longer want to continue in an unhappy marriage. This can prompt them to consider making a fresh start and adopting a 'new year, new me' mindset can lead them into deciding that the New Year would be a good time to embark on their new start.

If you are someone facing or contemplating divorce in the New Year then please get in touch - we have a lot of experience advising, guiding and supporting clients in this area of law.

Family Law & Divorce

Residential Property

Commercial Property

Wills, Trusts & Probate



Peter Wilkinson



Stephen Worrall

01925 359005

www.chambersfletcher.co.uk

Cambridge House, Suite 4, 16 Walton Road,
Stockton Heath, Warrington, WA4 6NL

New course records and strong community spirit at 10th Warrington Way ultramarathon

The Warrington Way 40 mile Ultramarathon Race marked its 10th anniversary recently, with strong community support from local running clubs, especially Lymm Runners – the organisers, while also raising over £400 for CALM, their chosen charity for 2024.

Around 500 runners took part – some doing the whole 40 miles, others in pairs or relay teams who split the distance between them. The race first took place in 2015, with just 100 runners.

The race has become a very popular fixture in the National Ultra Running Calendar with runner David Lindsay, who has completed all of them saying ‘All 10 have been superbly organised, have great volunteers and a fantastic community and support.

‘The Warrington Way has now become as traditional as Christmas

in our house, which would have been a bit of a surprise if I had known that when I completed my first one!’

This year, Kieran Walshe and Chris Lees, Race Co-Directors, chose to celebrate by arranging special bottles of Warrington Way Ale and matching coasters for every finisher, plus a Warrington Way special towel for runners who had competed in all 10 of the races.

Kieran Walshe commented: ‘The 10th running of the Warrington Way was a day to remember!

‘Thanks to everyone who took part, as solos, pairs or relay teams. Thanks to all the volunteers from Lymm Runners who made it happen. And thanks to the Oompa Loompas – who raised over £400 for Cancer Research – and many others who entertained, ran popup support stations, and cheered the runners on.’

Additionally, two fantastic new course records were set. The first was from solo elite ultra runner Rory Harris who completed the 40 mile run in an amazing 4 hours 49 minutes, shaving two minutes off the previous record set in 2015 by Charlie Sharpe.

Wigan-born Rory said: ‘I would have to say I thoroughly enjoyed the route. It has to be the flattest and smoothest race I’ve ever done. It was an absolute joy to be able to just zone out and practice running in its purest form, without having the usual hills or bogs to break stride!

‘I also felt a real sense of community in the race. Everyone from start to finish was incredibly friendly and helpful, the volunteers were amazing and it wouldn’t be the race it is without them. Well done to you and the Lymm Runners, for creating such a fantastic race,

‘I can clearly see it means a lot to everyone involved.’

The second record was set in the relay teams in a time of 4 hours 14 minutes – a massive 23 minutes off the 2016 record.

The eleventh event is now being planned for Saturday 8th November 2025, so if you, or any friends and family would like to know more, follow them on the Warrington Way Facebook page or Instagram – or check out the Lymm Runners website at www.lymmrunners.org.uk



CHESHIRE GOLD XCHANGE

SELL YOUR GOLD & SILVER TODAY!

ITEMS WE BUY:

- Jewellery
- Bullion
- Coins
- Silverware
- Pocket Watches
- Watches
- Asian Gold

VISIT US:

3 London Road
Stockton Heath
Warrington
WA4 6SG

SELL IN-STORE & ONLINE

01925 387 107

CHESHIREGOLDXCHANGE.CO.UK



Need IT Support at Home?

- Skilled and Friendly Technicians
- PC and Laptop Support
- Home Visit or Remote Dial-in
- Antivirus/Malware Check
- Unlimited Support Time
- Equipment Supplied: Laptops, PCs, Printers & Bespoke Builds

Call our Team: 01925 251143

sales@aspire-computers.com | www.aspire-computers.com



CLASSIFIED

Call 01925 631592 to advertise

ACCOUNTANCY & BOOKKEEPING

BOOKKEEPER/ACCOUNTANT. Licensed for maintaining financial records, VAT Returns, Payroll Service, Management Accounts, SAGE Software Consultancy. **Contact: 07815 617914.** (C1)

CARPET CLEANING

A1 STAINBUSTERS. A Warrington company cleaning carpets, hard floors, Upholstery (leather + fabric) and curtains in situ. FREE quotes for domestic and commercial. Approved carpet cleaners for Hancock and Woods for over 10 years. **Call John on 07765 314080** (B/23)

SIMPLY THE BEST CARPET CLEAN YOU will ever have. Cleaners UK Ltd. Est over 35yrs. Have your carpets & sofas beautifully deep cleaned leaving them fresh smelling & colour restored. Latest & best methods. Dry/steam. Leather cleaning, oriental rug specialist. Professional, reliable & affordable. **For more info call Neil Riley on 01925 264989 / 07831 336060 www.cleaners-uk.net** (B/24)

CAR SALES

PARKVIEW CAR SALES

We buy and sell QUALITY CARS
Best price paid

Telephone Peter on 01925 575737 / 07957 545479

23 Padgate Lane
Padgate, Warrington
Cheshire, WA1 3RS (C1)

CLEANING SERVICES

SIMPLY THE BEST CARPET CLEAN YOU will ever have. Cleaners UK Ltd. Est over 35yrs. Have your carpets & sofas beautifully deep cleaned leaving them fresh smelling & colour restored. Latest & best methods. Dry/steam. Leather cleaning, oriental rugs specialist. Professional, reliable & affordable. **For more info call Neil Riley on 01925 264989/ 07831 336060 www.cleaners-uk.net** (B/24)

GARDENING SERVICES



- All aspects of tree surgery
- Stump grinding
- Waste removal
- Locally based
- Free quotation

Beechwood Industries
www.beechwoodindustries.co.uk
01925 860544 (C1)

PHOTOGRAPHY

FAMILY & PET PORTRAIT PHOTOGRAPHY
Lymm based Andrew Collier Photography specialises in family and pet portrait photography using Lymm locations as a backdrop. Personal service with beautifully made frames and albums. **Call Andrew on 01925 471091 or visit www.andrewcollierphotography.co.uk** (C4/22)

PAYROLL

WHY TRY TO BE A PAYE EXPERT?
Watkinson Black can provide a cost effective payroll service, releasing you to concentrate on your business. **For further details please phone: 01925 413210 or e-mail: info@warringtonaccountants.co.uk** (C1)

CLEANING SERVICES

arleys angels

- Spring Clean Specialists
- Presenting your home for sale
- Moving house
- After building work cleans

01925 266834
... because you're worth it! (C1)

Established 1878

John Burrows & Sons
Fourth Generation Independent Family
Funeral Directors

Friendly & Professional Service
Day or Night ~ J. Tandy

The Old Smithy, Mill Lane, Lymm,
WA13 9SE **Tel: (01925) 752501**

Golden Charter Funeral Plans

www.johnburrowsandsons.co.uk

RE-UPHOLSTERY



RE-UPHOLSTERY
CURTAINS • BLINDS

FREE MEASURING & FITTING

TEL:(01925) 756388
www.orchardsoftfurnishings.co.uk (C1)

TAXI / PRIVATE HIRE

Horn's

Airport Transfer & Taxi Specialists
CALL MARTYN: 01925 751761
MOBILE: 07881 786250 (C3/25)

TYRES

EVERGREEN Centre of Excellence

Express
Mobile Tyres

Local Family Business. Est. 1997
01925 810000
www.expresstyres.co.uk
Order Online Today!

Branded & Budget Tyres
Cars, Vans, 4x4's, Caravans
Light Commercial
& Performance Vehicles

The tyre service that comes to you at home or your place of work

No Call Out Charge!

BRIDGESTONE MICHELIN
GOODYEAR Continental (C1)

To advertise in the classified section from as little as £15+vat

Call us now on 01925 631592



twentyfour seven
design & print ltd

PRINT PROBLEMS SOLVED!
FLYERS • POSTERS
BANNERS • STICKERS
MAGAZINES
OFFICE STATIONERY
CUSTOM PRINTS • FOLDERS
CARDS • SIGNAGE

THE NEW MEDIA CENTRE, OLD ROAD, WARRINGTON, WA4 1AT
01925 240247 • INFO@247PRINT.NET • WWW.247PRINT.NET

Obituary Notices

While Obituary notices are published free of charge, due to pressures on space, we can never guarantee they will be used and there can also be a delay of several months.

If you would like to guarantee a notice to appear in the next available issue, these can be purchased for £75 plus VAT which helps towards the running costs of your free community magazine.

To place an obituary notice or any other public/family notice please email info@lymmlife.co.uk

Your notice will appear the same size as this advertisement.

The North West's leading supplier of concrete

www.barrowmixconcrete.com

BARROW - MIX

1984-2024
40TH YEAR
ANNIVERSARY



FREE SITE SURVEY

6 DAY SERVICE

All areas covered

Free barrowing service

Only pay for what you lay

From half a cubic metre upwards

Levelling/laying service if required

(minimum charge)

We can supply

C25, C30, C35 Fibre Reinforced



VISA

MasterCard

Maestro

SOLO

Call NOW for a FREE quotation

01565 734111 or 01942 722629