

Lymm

Life

FREE EVERY MONTH

December 2010
Issue 141



Take a look!

Santa time

Page 16



Banner & Co

Independent Residential Sales and Letting Agent

See our main advert on the back page for details

01925 753636

Saturday Appointments Now Available

www.gavinismydentist.com

Gavin Coleby - Dentist Solutions

T: 01925 75 65 65

HANDYMAN SERVICES

HOME, OFFICE & GARDEN

Also Start and End of Tenancy Cleaning Service

Call NEIL on:

(01925)757905

07813201850

Call today for a FREE quote

LYMM BASED



Dickensian Festival programme

Centre pages



LYMM PARISH COUNCIL
Approved by Lymm Parish Council as the official magazine for Lymm

need family law advice?
call your local legal experts



free legal clinic
mondays 10am-7pm
by appointment

fbr forshaw & co
solicitors

01925 604713
www.fbrlaw.co.uk

Regular news updates at www.lymmlife.co.uk

Editor's Comment



Editor
Gary Skentelbery

Production
Paul Walker

Business Manager
Tony Record

Advertising
Freephone
0800 955 5247

Editorial
01925 623630

Email
info@lymm.life.co.uk

Websites
www.culchethlife.com
www.frodshamlife.co.uk
www.lymm.life.co.uk
www.warrington.tv
www.warrington-
worldwide.co.uk

Address
New Media Centre
Old Road Warrington
WA4 1AT

*Lymm Life is published monthly
by Orbit News Ltd.*

*The contents of this magazine
are fully protected by copyright
and nothing may be reprinted
or reproduced without prior
permission of the publishers.*

*The publishers are not liable for
any statement made or opinion
expressed by third parties in this
publication.*

Printed by TwentyFourSeven

WITH public service cut backs likely to hit hard in the New Year, 2011 is set to be a very tough year for some.

Small businesses have been the backbone of Britain since trading began and once again they will feel the full force of any economic down turn.

With this in mind it is more important than ever that the people of Lymm rally around and support local business people whenever possible.

Several traders in the village have urged us to appeal to our readers to support them in their hour of need - with the Christmas season a critical time for many shopkeepers in the village.

While some items can no doubt be bought slightly cheaper in giant super markets or online, none of us want to see a village centre full of empty

premises.

It has been said many times that Lymm has a unique community spirit - which will be on show in the annual Dickensian Festival.

What with the annual May Queen event and the Lymm Festival, we are really well blessed with community events in the village.

These are all unique events to Lymm, when many volunteers give up their free time to ensure others can enjoy a great community event. Many traders also provide financial support to ensure the events can take place.

Now is the time for everyone in Lymm to rally together and ensure we

can continue to enjoy a vibrant and successful community and help ensure that small businesses remain the backbone of our community.

Without local trade Lymm would be in danger of losing its unique community spirit, which is something we need even more of during what look like being tough economic times.

Finally I would like to take this opportunity of thanking our many loyal customers who have continued to support us ensuring we have been able to produce a bumper Christmas edition packed with local community news and success stories.

Merry Christmas and Happy New Year from everyone at Lymm Life.

**Have you got a story? Send your news items and pictures to
info@lymm.life.co.uk or phone 01925 623630**

R + N STANHOPE Coal and Log Supplies

Best Quality Coal • Smokeless Fuel
Logs Supplied in Bags and Bulk

Peat Bricks

Christmas Trees

Open 7 Days

Broomeedge Farm

Burford Lane, Lymm WA13 0SE

Tel/Fax: 752830

Private GP Service

CHEMISTRE
Natural Health

Convenient appointment times
Private lab tests and prescriptions

Discreet and confidential service

Please call to find out more
Tel: 01925 730123

www.51100GP.co.uk

Cheshire Natural Health, Beehive House, Tarporley Road, Stretton, Warrington

Call in the professionals!

GreenThumb's professional treatments ensure your lawn looks lush, green and healthy. With prices starting from £14 per treatment, you can have a beautiful lawn for less than the cost of doing it yourself, and without the hassle!

Call your local branch today for a FREE lawn analysis and no obligation quote on...

01925 210669

GreenThumb
LAWN TREATMENT SERVICE

www.greenthumb.co.uk

FROM
£14
per treatment

www.greenthumb.co.uk

Oh yez! Town crier co-opted on to council

LYMM Village Town Crier Peter Powell has been co-opted on to the parish council for the vacant seat at Heatley.

He was co-opted after Lionel Gallimore resigned from the Parish Council due to circumstances beyond his control and pending a move from the area.

Peter, who is well known in the village as the official town crier, will sit as an independent councillor, alongside good friend and fellow independent Joe Griffiths, who is also well known in the village through the local history society.

Both men are involved with the Lymm Festivities group who help put

up the Christmas decorations around the village each year.

Commenting on his new role in the community Peter said: "It is something which has always interested me and I would have done it years ago if it had not been for my work commitments."

"When I took early retirement and the vacancy became available I made my views known and I am delighted to be on the council."

"Politics shouldn't come into it at a parish level and I am happy to be another independent voice on the council."

Peter said it was not uncommon for Town Criers to stand as local councillors.

"There are around 130 Town Criers in the country and more than 40 of them sit on local councils! It must be something to do with the job!"

Long-standing parish councillor and Lib Dem leader of Warrington Borough Council Ian Marks said: "Unlike in the past the Parish Council is not party political. This is good and it means the best people can serve on the Council. Peter was extremely keen to be co-opted and is able to devote the time to it now he is retired."

"He lives in Heatley and is very well known in the village. He joins Joe

Griffiths as the second Independent councillor.

"The Liberal Democrats did have a candidate who was also very keen to serve and would have made an excellent councillor."

"We were spoilt for choice which is a very healthy position to be in. Rather than have a by-election which would have cost money and taken time, the other candidate decided not to go forward so allowing Peter to be co-opted."

The parish council now consists of 2 Independents, 4 Conservatives and 6 Lib-Dems.

Peter, who is pictured right leading the may Queen procession in his Town Crier uniform, took up his post for the first time at the October meeting of the parish council.



Playgroup Christmas Fair

LYMM Village Hall Playgroup's Christmas Fair take place on Saturday November 27 from 1-3 pm at the village hall in Pepper Street, Lymm, when children will be able to visit Santa in his grotto and take part in a variety of fun activities.

Stalls will include hook a duck, face painting, a chocolate fountain and bauble decorating.

The entrance fee of £2.50 for adults includes a drink and piece of cake (no cost for children).

Sophies Soft Furnishings

Custom made curtains, cushions, roman blinds etc
Choose from our range of fabrics or supply your own

For free home visit or advice ring
Anne on 01925 754446
www.sophiessoftfurnishings.co.uk
3 Holly Bank, Cherry Lane, Lymm

Whites Sports Warrington Market
1901 - 2001 - 100 YEARS OF EXCELLENCE

Specialists in: Darts, Bowls, Snooker, Air Guns, Walking Sticks, Rugby, Cricket, Football, Warrington Town Replica Jerseys
On Sale Now

GIFT VOUCHERS AVAILABLE
Telephone/Fax:
01925 631531

Kids Planet - Beamont
O'Leary Street
Warrington
Cheshire
WA2 7BQ
01925 630 879
Open 07:30 - 18:00

Kids Planet - Warrington
Elseneor Chapel
Elseneor Place
Leigh Street, Warrington
Cheshire WA3 1UL
01925 417 350
Open 07:00 - 19:00

Kids Planet
... A WORLD OF DIFFERENCE

We offer the world as seen through the eyes of a child. We give the highest standard of day care and education creating a unique home from home for our children.

- Flexible opening times
- Experienced and enthusiastic staff
- Ultra secure environment with CCTV
- Healthy nutritious menu
- Indoor and Outdoor play areas
- Excellent Ofsted Reports

Kids Planet - Lymm
29 Eagle Brow
Lymm
Cheshire
WA13 0NA
01925 759 220
Open 07:00 - 18:00
www.kidsplanetdaynurseries.co.uk

Kids Planet - Widnes
Kingway Learning Centre
Victoria Road
Widnes
Cheshire WA8 7DY
0151 257 7079
Open 07:30 - 18:00

Smart FURNISHINGS
LIVING • DINING • SLEEPING
FLOORING • OCCASIONAL

FREE fitting & underlay on all stock carpets

ORDER NOW to avoid the January VAT increase

www.smartfurnishings.co.uk

FREE Local Delivery
FREE van fitting
Smart Furnishings Ltd
Cherry Lane
Stockton-on-Tees
Warrington
WA2 6LJ
01925 247518
ESTABLISHED 1971

What's On

in Lymm
in association with
LYMM PARISH COUNCIL



December 13

LYMM HISTORY SOCIETY
Village Hall, Pepper Street, 8pm
"Conservation of Records"
Lynette Banks (Cheshire Record Office)

December 14

LYMM PARISH COUNCIL
Lymm Parish Hall, 7.30pm

LYMM LIONS GROUP

Meet: Bridgewater Club, Lymm
1st and 3rd Tuesdays of the month. 8pm
Contact: 0845 833 5729

LYMM THURSDAY EVENING BRIDGE CLUB
Lymm Village Hall every Thursday 7pm

MAPLE LODGE ART GROUP

Meet each Wednesday 9.30am - 12.30pm
Maple Lodge Guide HQ, Pepper St, Lymm
Details: 01925 755126

ROTARY CLUB OF LYMM

Meet every Wednesday at Statham Lodge Hotel
7.15pm for 7.30pm
Contact the secretary 01925 650189

LOVING HANDS

Knitting for charity at Lymm Methodist Church,
2nd and 4th Thursday each month.
1.30pm - 3pm. Details: 01925 823614.

MARKET LUNCHES

Eagle Brow Methodist Church
3rd Thursday in the month
Light lunches 12 noon till 2pm
All proceeds to Opening Doors Charity, Warrington

LYMM SCOTTISH COUNTRY DANCE CLUB

St Mary's Church Hall
Second and fourth Fridays (Sept - May) 7.30pm
Details: 753853

LYMM BAPTIST CHURCH DROP LUNCH

Higher Lane, Mondays (during term time).
12 noon to 1.15pm. £2.50

LYMM JUBILEE GARDENING CLUB

Meet Third Wednesday of the month
Lymm Baptist Church, Higher Lane. 7.30pm
Visitors welcome. £2 includes tea and cake

LYMM FLORAL ART GROUP

Lymm Village Hall
Third Monday of the month (except August) at 7.30pm

LYMM TWIN TOWN SOCIETY

Sat 13 Nov - Twin Town Supper Evening (speaker top
economist Dr Ruth Lea)
Thurs 18 Nov - Beaujolais Nouveau Evening
Contact: 01925 758361

Non-profit making community organisations who
would like to feature in the
What's On Lymm

should contact Lymm Life on

01925 631592

Lymm Festival's Winter Warmers

LYMM Festival's Winter Warmer events continue with a Comedy Night at the Spread Eagle on Friday November 26 at 8pm with the first of the very popular stand-up comedy nights.

Comedien Stephanie Davies is joined by Jane Hill, Patrick Devine and compere Okse. Tickets £10 are on sale now from the Spread.

The fourth season of Winter Warmer events was kick started last month with a piano recital by Malcolm Binns organised by Paul Cooper and Music in Lymm.

Other events taking place before Christmas include a Ladies Christmas Shopping and Pamper Evening at Lymm Golf Club on Wednesday December 1 from 5-10pm

It will include 20 stalls (including many Lymm based businesses) featuring fashion, gifts, cards and treats for all the family or a chance to have nails painted or a relaxing hand massage. The event will help raise money for the Motor Neurone Disease Association charity.

Admission is free, though donations will be welcome.

On Tuesday December 7 a Winter's Tale comes to Lymm Youth and Community Centre.

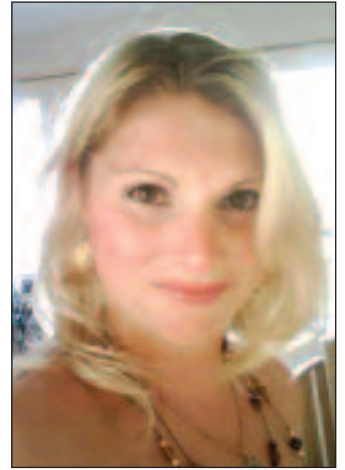
The film created by Alan Williams will be shown featuring archive footage of Lymm at in the grip of winter and show how the locals enjoyed skating on the Dam more than 50 years ago!

Lymm historian Joe Griffiths will give some insights into past

Christmases, and visitors are invited to bring along their own memorabilia. Tickets £7.50 (£5 concs) from Lymm Electric, Rush Green Service Station or the Youth Club (open on Sundays).

Organised by the Lymm Youth and Community Centre, proceeds will be shared with the Lymm Festival.

Further details on www.lymmfestival.org.uk



Books wanted

THE Warrington Branch of Amnesty International will be hosting their annual Card Signing for Political Prisoners in Lymm Village Hall on December 4 from 10.30 am to 3.30 pm.

The event is always well supported by Lymm residents and visitors to the village and this year the group plan to have a Book Sale to help raise funds for campaigning.

Books can be donated by calling Su Williams on 01925 75 4080 and she will arrange to collect them

Art exhibition boosts funds for Cotebrook

FORMER police chief John Stalker was on hand to officially open a special art exhibition at Cotebrook Home, Lymm.

Mr Stalker saw the work of residents which went on sale to help raise funds for the home.

Home manager Sidney Timms said the event had been so successful it was now being considered making it an annual event.

"We sold a lot of pictures and the residents loved it!" she said.

Mr Stalker is pictured with Mrs Timms (right) and committee members Alley Clarke and Suzanne Margerson.

Cotebrook House

**Lymm Dickensian Day
Saturday 11th December**

Come and visit our stall

Cards and Gifts made by
our Residents

Tombola and Bran Tub

Come and do your Christmas
Shopping in style

Respite & Day Centre vacancies are generally available,
please contact us if you are interested

Opposite Lymm High School

Oughtrington Lane, Lymm WA13 0QY Tel: 01925 752583



The Complete Kitchen & Bathroom Service

Village Designs

We design and install all types of kitchens
and bathrooms. Our comprehensive service
includes all trades:

Lighting • Tiling • Flooring • Decorating etc

One local company from start to finish

Visit: www.villagedesigns.co.uk or

Ring Jeremy on 07810 421243

ARCHES

SHOES, BAGS & ACCESSORIES

**PRE CHRISTMAS
SALE**

**Great Christmas
Gift Ideas**
Boots, Bags,
Fashion, Party Shoes
& Accessories



01925 751977
18 Eagle Brow, Lymm
www.archesshoesbags.co.uk

Welcome to a proper bank



At Handelsbanken relationship banking still lives up to its name. With all key decisions made locally by us at the branch we are able to offer a highly personal banking service that is designed to meet your individual requirements.

We provide all the main services that high street banks provide, from day-to-day transactional banking, to the more sophisticated needs of the modern business. Our Individual Banking service is designed for high net worth customers who need a bespoke

offering with easy access to their manager. Putting the needs of the customer ahead of all else lies at the heart of everything we do. We tailor our current accounts, mortgages and loans to your individual requirements.

Chris Clarke
Karen McComb

Corporate Account Manager - Tel: 01925 575706
Individual Banking Manager - Tel: 01925 575708

1st Floor, 760 Mandarin Court
Centre Park, Warrington, WA1 1GG
www.handelsbanken.co.uk/warrington

Handelsbanken

A Dash in the Splash

NEARLY 100 young runners aged between 3 - 14, took part in the 5th annual Oughtrington Community Centre Fun Run at Spud Wood.

Despite the rainy conditions, runners turned out in force for this popular local event, and enjoyed a muddy splash around Spud Wood.

Event organisers Mandy Lorton and Caroline Thomas were delighted with the turn out and the great community spirit at the event. A warm-up before the run was led by Arthur Kelly and Rebecca Newell. The younger runners aged up to 10 then ran one mile around Spud Wood, with the older runners completing a two mile course. All runners received a medal at the finish to mark their achievement.

The run was followed by a BBQ, refreshments, stalls and games in the community centre. Local children Beth and Anna Simms, Megan and Ellen Thomas, Jess Impey and Ellen Gordon ran a very successful cake stall and entertainment was provided by Warrington Youth Brass Band. 2nd Oughtrington Scouts and Oughtrington Preschool ran stalls and games, making it a real community event.

Thanks go to the Woodland Trust for kindly allowing the use of Spud Wood for this event and to event

sponsors "Oasis the Dental People" and "Golden Gates Housing".

So far, the event has raised £800 which will go towards a much needed new roof for the community centre. It is hoped the final figure will

be even higher when all the sponsor money has been collected in. Any outstanding sponsor money should be returned to Mandy Lorton, 35, Sandy Lane, Lymm, WA13 9HP as soon as possible.



Twin Town Society dates

LYMM Twin Town Society have three events planned before Christmas

The first is the Twin Town Society Supper, featuring top economist Dr Ruth Lea, at Oughtrington Community Centre on Saturday, November 13.

Then on Thursday, November 18 there is a Twin Town Society Beaujolais Nouveau Evening at the Spread Eagle.

Finally on Sunday December 19 – Twin Town Society Noel Arrive at Lymm Village Hall.

For details and tickets, call 758361.

FREE

DURING
NOVEMBER

Senior Pet Health Check

Available for cats and dogs
over 10 years old

Please note if your animal is already ill you should book a normal consultation.



LYMM
VETERINARY
SURGERY

10 Booths Hill Road
Lymm WA13 0DL
Telephone
01925 752721

www.willowsvetgroup.co.uk



Bramble Lodge
Day Nursery

Birth – 5 years

Good quality childcare
and education in a
homely environment.

Next to Lymm High School

www.bramblelodge.co.uk

01925 757597

36 Oughtrington Lane • Lymm

BYTEWYSE
COMPUTERS LTD

THE SMARTEST CHOICE FOR SYSTEMS & SUPPORT

- Custom built PCs to meet all requirements
- Full Windows 7 supply and support
- Free home delivery and installation with up to 24 months warranty
- PC repairs and maintenance
- Remote Access Support
- Networking and PC support contracts for small or home businesses
- Call us now on 01925 759658

www.bytewysecomputers.com

56, PADDOCK VIEW, LABREY LANE, THELWALL, WARRINGTON, WA4 2TF

Abbey Leys Farm Shop

Fresh Farm Food at its Best!

Organic Free Range Eggs • Goose and Duck Eggs • Pickled Eggs
Home Grown Potatoes • Fresh Fruit and Vegetables
Farmhouse Cheshire Cheese • Butter • Fresh Milk
Farmhouse Ice Cream and Lemon Cheese

Opening Times: 9.00am - 5.30pm Mon - Sat. Sun 10.00am - 4.00pm

ABBEY LEYS FARMERS' MARKET

First Sunday each month 10am - 2pm

Tim & Janet Harrison

753465

Peacock Lane, High Legh



Thelwall Upholstery

FOR THE MOST COMPETITIVE RATES IN THE AREA

49 Knutsford Road, Grappenhall WA4 2NR

Call Sean on: 01925 604770 or mobile: 07799 228080

For all your upholstery needs

SPECIALISTS IN:

- Re-filling Cushions • Re-springing • Full Re-upholster
- Dining Furniture • Headboards

A wide range of sample books to choose from
All at competitive rates

PHONE FOR YOUR FREE ESTIMATES





Poppy Appeal launch

The Lymm and District Royal British Legion launched their Poppy Appeal at The Cross Lymm.

Pictured L-R, (Air Cadets) Tim Geddes and Kati Osborne of 2137 squadron Lymm and poppy customers Sarah Spencer, Sam Spencer aged 1, Paul Spencer and Charlie Spencer aged 3.

Council call for car parking review

LYMM Parish Council has called for another review of car parking in the village following claims that vehicles are parking dangerously since the introduction of the pay and display on the Pepper Street car park.

Cllr Pam Marks told members of the parish council that she was concerned that following the introduction of pay and display car parking in Lymm, people were now parking on the streets in a dangerous manner.

She said there was often a problem with cars parked on both sides of Brookfield Road and on the west side of Eagle Brow near the new nursery, with on street parking increasing since the introduction of the pay and display car park.

Meanwhile Cllr Joe Griffiths said



that many of the white lines in the Pepper Street Car Park had faded and the surface was breaking up in various places.

Members of the parish council agreed to ask Warrington Borough Council to undertake a review of the car parking in Lymm and to re-paint the white lines and repair the surface in the Pepper Street Car Park.

Odd, but not everyone knows we do
horse and horsebox insurance

We do.

Call 01928 735967 for a quote or pop into the office to talk to Katie or Leanne at NFU Mutual Office, 123 Main Street, Frodsham WA6 7AF



Agent of The National Farmers Union Mutual Insurance Society Limited.

We do right by you

adcott opticians

£50 off this Christmas

Get £50 off lenses when purchasing frames from any of these designers:

- POLO
- Ray-Ban
- D&G
- PRADA
- VERSACE
- BVLGARI
- VOGUE

offer ends 31/12/2010

14a The Cross, Lymm WA13 9HP
 mail: opticians@adcott.net
 web: <http://adcotts.opticians>
 tel: 0925 757075

Brolley

www.brolley.co.uk

We've just arrived in the area and would love to meet you!

We're Brolley.co.uk, the UK's fastest growing property services business.

We provide services to households throughout Cheshire and have the following vacancies:

- Domestic Cleaning
- Plumbing
- Electricians
- Building

Based in Lymm

To apply, call us or send your CV today

01925 321317
jobs@brolley.co.uk

Youth centre could be extended

LYMM Youth and Community Centre could be extended in the next two years.

Members of the management committee are investigating the potential for a possible extension to the building in 2011-12.

Currently the centre is proving to be the victim of its own success, with bookings rolling in and demand outstripping supply.

The business plan has been revised and architect Andy Babb of CB3 Design has created a visualisation of what the building could look like when extended.

The area above the main sports hall would accommodate a large area for a wide range of activities and much needed storage space for equipment.

It would be soundproofed so that any noise from downstairs would be

eliminated when both areas were in use.

The area above the current upstairs room would comprise of one long room with removable partitions to ensure versatility and to allow for meeting rooms, or lounge areas for general use.

There would be an outdoor terrace overlooking the canal and old Post Office building, allowing people to relax and enjoy the views.

A further extension would be added to the car park side of the building, which would allow for an additional general purpose room, a new kitchen and further storage.



How the youth and community centre could look

PETS fundraiser for Society for Abandoned Animals

THE Warburton based Pets Animal Hotel is running free courses for all dog owners in return for a donation to the Society for Abandoned Animals.

They are providing first aid courses for dog owners, pre-purchase advice to avoid the common pit falls of puppy ownership and puppy parties every other week, all of which are free to attend.

They will be run by Francine Jennings and two vet nurses from the Willows vet group.

All the evenings, apart from the puppy parties, are for people only (No Dogs). The vet nurses and Francine will be more than happy to answer any questions about general health, behaviour and training.

The meetings are held in the doggy day creche, weekday evenings with tea and bickies.

Please ring Fran to enquire about a course Tel. 01925 750418 or 07792756545.

BROTHERSTON

I Fix Problems!

Electrical - Plumbing - Audio Visual - Joinery
Bathroom Problems - Kitchen Problems

Call Steven Brotherston on

07818 636 112

Email: steve@ston.co.uk



JOHN PERCIVAL

BUILDER, EXTENSIONS & INDUSTRIAL WORK

- Experienced in all areas of building work from repairs, alterations, renovations and extensions
- Specialist advice and immediate estimates
- Accurate time schedules
- Registered with the federation of Master Builders from 1973 and listed on the Police Platinum Members Guide
- Guaranteed professional, quality work from a well established, reliable building company



BEFORE



AFTER

Tel/Fax: **01925 755984**

Mobile: 07831 239612

8 Oughtrington View, Lymm, Cheshire

Web: www.johnpercival.co.uk Email: john@johnpercival.co.uk

carpediem

WEB DESIGN, DEVELOPMENT & PRINT

Delivering creative web and print solutions since 1999, Carpe Diem have developed strong working relationships with clients of all sizes.

UKTV, ASICS, Onitsuka Tiger, Transform Medical Group, Otelo, The Energy Ombudsman, Halle Orchestra, URBS

T: 01925 299 842

F: 0871 434 5371

E: info@cd-inc.co.uk

www.carpe-diem.co.uk

60 High Street

Newton-Le-Willows

WA12 9SH

Website Development

E-Commerce

Branding

Print

SEO / PPC / Marketing

SMS / MMS / Email Campaigns

Hosting

DVD / Video Production

Product Photography

B.A.S

Bespoke Architectural Structures Ltd

Transform your living space or work place with specialist glazing made to the highest standard. Family based business manufacturing, supplying and installing glazing systems to the domestic and commercial market specialising in sliding folding doors. Call us now for a **FREE no obligation quotation.**

Best quality and service assured!



www.b-a-s.co.uk

Tel: **01928 579957**

Unit 3, Sycamore Court, Manor Park, Runcorn, WA7 1RS



P.E.T.S. ANIMAL HOTEL

Setting New Standards in Animal Care

- Hotel style living for your pets
- State of the art grooming salon
- Behaviour and training management
- Reliable dog walking and home care visits
- Unique, purpose-built indoor and outdoor Doggy Day Creche
- Pick up and delivery service

Viewings welcome

To arrange a tour please ring Fran Jennings on
07792 756 545 or 01925 750418

57 Burford Lane, Lymm, Cheshire WA13 0SH
www.petsanimalhotel.co.uk

With an increase in sales, we currently have clients waiting to purchase. Ridgeway Residential is the right choice to sell your property quickly and efficiently.

Urgently Required Properties For Sale. Please call for a Free Market Appraisal Today

FOR SALE



17 Rushes Meadow, Lymm
A large modern detached property only a short drive to Lymm Village. The property comprises of entrance hall, lounge with double doors, dining room, family room, snug, downstairs W/C, large breakfast kitchen, utility, conservatory, 5 beds, 3 baths, Gardens to the front and rear. Parking for 3 cars.
£599,950



7 The Poplars, Lymm
A period property with stylish contemporary living, comprises a large living room, dining room, breakfast kitchen, cloak room/ WC, 4 good bedrooms (en-suite shower room to the master) and family bathroom with walk in shower. Available immediately with no chain. Viewing Recommended.
£450,000



1 Longcroft Place, Lymm
A well presented modern detached property standing on a corner plot in Heatley Mere. Comprising of lounge with double doors to garden, dining kitchen, utility, W/C, 5 bedrooms, 3 bathrooms, good sized garden, garage and off road parking for 3 cars. No Chain. Viewing Recommended
£419,950



30 Quayside Mews, Lymm
Well presented mews property overlooking the Bridgewater canal. The property comprises of an entrance hall, utility, bedroom 4/study, shower room, good sized living/dining room, breakfast kitchen, 3 bedrooms, 2 bathrooms, garage, walking distance of Lymm village. Viewing Recommended
£304,995

FOR SALE



78 Cherry Lane, Lymm
Attractive period property in sought after location. Split on three floors, on the ground floor, entrance hall, lounge, family room, dining room, downstairs bathroom, internal space/utility, first floor 3 beds, family bathroom, second floor 2 double bedrooms, garden and garage. Viewing Recommended
£459,500



8 Farcroft Close, Lymm
Ridgeway Residential are pleased to offer for sale this 4 bedroom property, which offers extensive and versatile accommodation arranged over three floors, comprising of downstairs W/C, cloakroom, lounge, fantastic open-plan dining kitchen with living area, three bathrooms. Viewing Recommended
£445,000



24 Manor Road, Lymm
Well presented semi detached property only a short walk from Lymm Village. porch, large lounge, dining kitchen, utility, conservatory, 3 large bedrooms (the 3rd bedroom could be split into 2), 2 bathrooms, double glazed, garage with electric up and over door, gardens front and rear. Must be viewed
£399,500



16 School Drive, Lymm
On the popular Heatley Mere estate in Lymm, the accommodation on offer in this property consists of 3 bedrooms, 2 en-suites and a family bathroom, living room, dining kitchen, rear garden, single garage and off road parking. Viewing Recommended
£260,000

TO LET

61 Scholars Green Lane, Lymm
3 bedroom detached property, furnished, available immediately
£995pcm

18 Warrington Road, Lymm
3 bedroom semi-detached cottage, unfurnished, available immediately
£895pcm

8 Bridge Close, Lymm
4 bedroom link detached property, unfurnished, available 27/11/10
£995pcm

16 School Drive, Lymm
3 bedroom mews, part furnished, available 25/11/10
£795pcm

TO LET

Due to the high demand in Rentals we require To Let properties in all prices. Call today, we offer competitive fees!

19 The Cross Lymm Cheshire WA13 0HR T. 01925 756931 E. sales@ridgewayresidential.co.uk

The lost world of doorstep milk!

THE tale of a Lymm family milk round - which had its roots in the streets of Liverpool where cows were kept in the backyard - is told in a new book.

"Urban Cowboys: Lost World of Doorstep Milk" by Lymm writer Dr Duncan Scott tells the history of the business.

Joe Capstick senior, father of Lymm woman Margaret Rowlands, was head of the business which had more than 2,000 customers in Lymm until the mid 1990s.

The business was a family affair and everyone in the Lymm area knew Margaret, who was born in Liverpool, and her family.

Dr Scott, a trained teacher and currently an associate research fellow at the Third Sector Research Centre at the University of Birmingham, says the family were well known and respected in Lymm.

He said: "They had three navy blue Ford vans with three people in each. They used to order fish and chips from the chip shop in Sandy Lane and then sit on the car park at St Peter's Church, to eat them."

"They were well known and the milk round was a popular feature of old Lymm."

The book tells how before the rise of corporate dairies, neighbourhood based urban milkmen used to keep up to two dozen milk cows in their backyards.

Its cover shows a picture of Joe, senior urban cowboy and cow-house owner, advertising a cowboy film starring Hollywood legend Alan Ladd.

The picture was taken in 1951 on

the corner of West Derby Road and Marlborough Road, Tuebrook, Liverpool.

Joe's former cow house still stands diagonally across from the telephone kiosk pictured right, but is in a vandalised state.

Dr Scott said: "Gradually the cows disappeared until Joe Capstick junior's departure in 1975 signalled the absolute end of a way of life which had brought the countryside to the heart of the city."

The book features three maps and more than 30 photographs in a social history of a vanished way of life, and costs £6.99. Details are available from Dr Scott on 01925 753281 or wdscoff106@btinternet.com



Dr Scott with Margaret Rowlands and the book



Classic Home Improvements

Established 1987

Fireplaces | Kitchens | Bathrooms | Stoves
Granite Worktops



**upto 50% OFF
Kitchens**

Arcadia Kitchen Range
8no - full colour 19mm base & wall units inc Doors, handles & cornice.
40mm Laminate worktops
1.5 Bowl Stainless Steel Sink & Taps
Only £ 2400 Inc Fitting



**30% OFF Selected
Woodburning Stoves**
fitted before Christmas



**upto 50% OFF
Bathrooms**

Jasmin Bathroom Suite
Basin & full pedestal,
Basin mixer tap with pop up waste,
Close coupled pan & cistern inc duel flush & soft close seat.
Luxury shower bath inc shower screen & bath/shower mixer taps.
Only £ 1595 Inc Fitting

Classic Home Improvements

NEW
High
Efficiency
Gas Fires
on Display

61-67 Knutsford Rd,
Warrington
Cheshire,
WA4 1AB

Tel : 01925 445455
www.classichomeimprovements.co.uk

GRANITE WORKTOPS SUPPLIED & INSTALLED
Call 01925 445455 for a free estimates

Sparkle this Christmas

THE LOOK

HAIR & BEAUTY BY DESIGN

we are now an
AVEDA exclusive
pure privilege salon

Christmas appointments are now available...


- ★ **Christmas Party Special!** Spray tan, party hair and a file & polish for £50, ask at reception for more details about our Christmas packages.
- ★ **Christmas gift cards & Aveda gift packs** are now available to buy in the Salon.
- ★ Appointments are in high demand **so book early to avoid disappointment!**

for more information or to book call
01925 757932

Breast Cancer Care 'pink week'!



Thanks to everyone who helped us support Breast Cancer Care, we raised **£859.60** by participating in a bed push, wearing fancy dress and other activities!

 Search 'The Look salon' for promotions. Unit 2-3 Chase Meadow, Heatley Mere, Lymm, WA13 9UP.

Christmas week opening times: Tues, Weds & Thurs 9am-9pm, Fri 9am-3pm. Closed on Sat, Sun & Mon. **FREE CUSTOMER PARKING.**

Check out our new website and book online at www.thelookonline.co.uk or through our facebook page.

Delightful dishes designed by talented artists

PUPILS at Oughttrington Community Primary School in Lymm proudly showed off their latest art project with an unusual twist – as they created works of art on ceramic plates.

Working in conjunction with a local pottery café, 'Coffee au Clay' in Stockton Heath, the school decided to push the boundaries of previous exhibitions.

The challenge was demanding, with the school's population having grown to 360 children, and with only three weeks to complete the drawing, painting and firing of each plate to meet the exhibition deadline.

Rob Sergeant - Owner of Coffee

au Clay, stated: "It has been challenging and exhausting, but extremely satisfying, with overall magnificent results".

Sally O'Hara (pictured below with pupils) - School Art Coordinator at Oughttrington CPS commented; "I'm really impressed with how incredibly disciplined, creative and organised the teachers and children have been, to achieve these fantastic results within such strict deadlines.

"The team at Coffee au Clay have been fantastic, and their commitment to the project has been invaluable, offering materials and advice and even purchasing an additional kiln to help cope with the extra demand".

Every child in Oughttrington CPS has designed and created their own personalised clay plate. Each year group have worked to different themes linked to the schools creative curriculum, with; hand prints, doty dots, fire works, space theme, flowers, pirates and individual 'coats-of-arms'.

The overall exhibition was a spectacular display of each child's work, showing the progression of skills and creativity throughout the school. Also, to add to the surprise, it was the first time the children saw their finished glazed masterpieces, when they visited the exhibition with their parents.



Proudley showing their artwork from left, Ellie Turner aged 10, Esme Stevens aged 8 Robert Cooper aged 10, Alex Adams aged 8 and Holly Oldknow aged 10.



Head teacher, Gill Marsland said she was "delighted by the imagination shown by the pupils, who can all feel justifiably proud."

Once the exhibition finished the pupils had an opportunity to purchase their own 'Masterpiece on a Plate' to display at home with pride, or simply to eat their tea on. These plates celebrate each child's success in an artistic, practical and fun way.

Deadline for the January issue of Lymm Life is November 30th

20% off
Normal Price

ALL ARTIFICIAL & PRE LIT CHRISTMAS TREES
excludes fibre optic and fresh cut christmas trees

SAVE £10.00
Lit Victorian Church
£24.99 each
normal price £34.99

SANTA'S GROTTTO
Open Sat & Sun 10.30am - 4.30pm
20th - 24th Dec 10.30am - 4.30pm

Fresh Cut Christmas Trees Available

FREE £5 Gift Voucher
for every Fresh Cut Christmas Tree bought and returned for recycling

British Grown Poinsettia & Pot
£9.99
normal price £11.98

High Legh Garden Centre
High Legh • Knutsford • 01925 756991

REAL EARTH **ALL AT TRADE PRICES**





**NATURAL STONE TILES • WOOD FLOORING
BATHROOM SUITES • UNDERFLOOR HEATING
FURNISHINGS • FITTING SERVICE AVAILABLE
PORCELAIN TILES • INDIAN STONE PAVING**

Lymm Nursery • Rushgreen Road • Lymm • Cheshire • WA11 9PR
T: 01925 759 607 • T: 01925 758 699 • E: info@realearthuk.com

puure

Lingerie

Start dropping hints now...
or better still, treat yourself!



- ♥ Lingerie
- ♥ Nightwear
- ♥ Mens Underwear
- ♥ Fashion Hosiery
- ♥ Stunning evening wear
- ♥ Jewellery
- ♥ Gift vouchers

Men Only Shopping Evenings

Wednesday 15th December
5.30-7pm

Wednesday 22nd December
5.30-7pm

enjoy a festive shopping evening



Late Night Christmas Shopping

Thursday 16 Dec till 7pm

Thursday 23 Dec till 7pm

Sunday 19 Dec open 10am – 3pm

♥ Shopping ♥ Lymm

*Lingerie beautifully
gift boxed for Christmas*

CHARNOZ

FANTASIE

FAUVE

froya

lepel

EMPIRENTÉ

AVANTAGE

EROS/DONNA

masquerade

Phantasia

Open 9.30 - 5.30 & 7pm on Thursday nights • Sunday and Monday by appointment only

Tel: 01925 556673 10 Eagle Brow, Lymm, Cheshire WA13 0LN
www.puure.com

May Queen funds available

FUNDS raised by this year's Lymm May Queen Festival are now being distributed and local charities and community groups can apply.

More than £1,000 is available and groups interested should contact chairman Lynn Shaw, 85 Whitbarrow Road, Lymm, WA13 9AY, or by email at mrandmrschristmas@btinternet.com before December 1.

Those applying need to give their

name and the charity name and registration number. They should also give an outline of what the money will be used for and what impact it will have on the local community.

Lynn said: "It is fair that the money goes back to the people in Lymm and supports the community in the area."

Once the money has been distributed the committee will announce a date for the next AGM.

Books wanted

THE Warrington Branch of Amnesty International will be hosting their annual Card Signing for Political Prisoners at Lymm Village Hall on on December 4 from 10.30 am to 3.30 pm.

The event is always well supported by Lymm residents and visitors to the village and this year the group plan to have a Book Sale to help raise funds for campaigning.

Books can be donated by calling Su Williams on 01925 75 4080 and she will arrange to collect them.



From left Pam Hunter, chairman Lymm Parish Council, presents the award to Ellie Mae Fletcher, with Kath Buckley, president Lymm Lions, and Esme Shattock, who receives her award from Thomas Kelly of the Samurai Judo Club.

Special awards for youth ambassadors

TWO Lymm youngsters were honoured with special awards presented by Lymm and District Lions Club during a celebration at Lymm Rugby Club.

The Lymm and District Lions Club Young Ambassador Awards, and a cheque for £50 each, were presented to the two winners by Matthew Kelly, 15, British School Boy Judo Champion and Parish Council chairman Pam Hunter.

Esme Shattock, 17, was nominated for the award by Lymm Guiding. She first joined the Rainbows when she was five, and was later a Brownie before joining the Guides.

She was spotted for her friendly and helpful nature in working with the younger Brownies and was invited back to be Pack Leader and subsequently Young Leader of 6th Lymm Brownies. She has worked with the unit for six years.

She is also a competent violinist and a member of Warrington Youth Orchestra, Lymm High School Orchestra and St Peter's Music Group. She is a good swimmer and is a lifeguard at Lymm Leisure Centre.

Esme is a member of St Peter's Church and recently helped re-establish the Sunday School. This year she raised funds and travelled with a group from the church to build houses in Mexico.

An award was also presented to

Ellie Mae Fletcher, nominated by Gendai Martial Arts. She has been a member of the club since 2006 and passed her first grading in October that year and is now taking her black belt.

For some time she has been helping Sensei Shipton in the Gendai Tigerz Class - she has helped young children in the class learn martial arts and helped add fun to classes by assisting with games.

Ellie Mae helped with Gendai fundraising by taking part in a demonstration at Lymm Festival, and other events.

She was a pupil of Cherry Tree Primary School and visited St. Wilfrid's Church where she participated in Light Hearted Leap, a dance, music and film project for the residents of Booths Hill House.

Success

In September Ellie Mae joined Lymm High School and was chosen to play netball after her success as primary school team captain. She also plays football, has completed courses in the sport and plays at Manchester United's Carrington Training Ground.

Carers sessions in Lymm

CARERS in Lymm can now get help and advice on their doorstep thanks to a new series of drop-in sessions being organised by a local charity.

Warrington Carers Centre, The Bungalow, Garven Place, is organising outreach sessions throughout the town.

A spokesman said: "A carer is someone who without payment helps or supports a relative, child, neighbour or friend who because of illness, disability, frailty or addiction is unable to manage alone."

Drop-in sessions are held at the centre every Monday and Friday from 10am to 2pm.

For those who cannot get to the centre, outreach carers support workers are visiting Lymm. They will be at The Sanctuary Cafe, Lymm United Reformed Church, Brookfield Road, on Thursdays from 10am to 12noon.

Est. 17 Years

CHRISTMAS TREES

ALL TYPES, ALL SIZES
100'S OF QUALITY TREES TO CHOOSE FROM
BASES, HOLLY, WREATHS

OPEN DAILY FROM 27 NOVEMBER
10AM - 7PM

TEL: 07964 020 468

SPRINGHILLS, AGDEN BROW, WA13 0UE
A56 LYMM TO ALTRINCHAM ROAD

Rosebank Naturegarten, Pepper St, Lymm

a dream come true for you and your child.

- Home from home
- Extensive grounds
- Outside learning days
- Early Years/flexible sessions
- Full Day Care
- Children from 2½ years

Did you always want to build dens, explore, do woodwork and gardening?
...make sure your child has a head start and a childhood to sing about with a setting that gives them real space to develop, learn and play.

Our new Scandinavian Log Cabin is the natural choice for your child with its custom design and outside areas. Most of all we really do cater for children's individual needs with all play being led or directed by qualified teachers. 'The diverse curriculum offers opportunities for children to develop their skills and find their strengths' (OFSTED)

Up to 15 hours per week may be FREE using Early Education Grants for 3 and 4 year olds.

We can also take babies and toddlers at The Rosebank Centre, our other Pepper Street nursery, which focuses on their specific needs.

Phone Sadie Hopley on 758959 to come and explore

Simon serves up a book

WHILE serving food in a Lymm restaurant a would-be author had the chance to fine tune his ideas for a gripping detective novel.

Simon Gould's book "Playing the Game," is a thriller set in Los Angeles.

In it serial killer The Chemist sets Detective Patton of the LAPD a series of challenges to save a life.

In each game he kidnaps a girl, poisons her and sends the antidote to police. Then the "game" starts as they have just 24 hours to find her to save her life.

Warrington-born Simon, 34, is a former pupil of Penketh High School

and studied computer systems with business at Bangor University.

He is manager of the Poplars 2000 McDonald's in charge of 110 staff, and admits that sometimes while working he fine-tuned his novel idea.

Simon decided on the location for his story through being a big fan of US crime thriller writer James Patterson.

"I thought the book would be a bit more commercial if it was set in LA," he said.

"It was a case of thinking what would make an interesting plot and then just brainstorming ideas. Sometimes ideas would turnaround as I was going about my job."

He started writing in late 2008 and the final draft was ready early this year. The book, priced £9.99, is available from www.amazon.co.uk and www.waterstones.com



Santa cruise!

LYMM Cruising Club will be taking Father Christmas by canal boat through Lymm village on Saturday December 11, when he will be passing through the village between 4:45pm - 5pm.

Curious, but not all insurers provide specialist home insurance for high value homes and lifestyles.

We do.

Call 01928 735967 for a quote or pop into the office to talk to Katie or Leonine at NFU Mutual Office, 123 Main Street, Frodsham WA6 7AF.



NFU Mutual
Celebrating 100 years

Agent of The National Farmers Union Mutual Insurance Society Limited.

We do right by you

oven
oven valeting service

oven.co.uk

...punctuality, pride, courtesy...

- Range & Aga Specialists
- Ovens & Hobs
- Extractor Hoods
- Microwave Ovens
- Traditional Stoves

LET US HELP - PHONE NOW
01925 453377

the UK's favourite oven cleaning specialists

Dunham Window Cleaners
See the world through Dunham clean windows
Local professional window cleaners with over 20 years experience

Services also provided:

- Reach & Wash system for those hard to reach areas
- PVC • Roof • Conservatories
- Gutters all cleaned
- Outside of properties cleaned
- Driveways/Patios Jet Washed
- Domestic Cleaning

Jet washing service also available

Glynn on 07723 507840
or Steven on 07874 118219
Office 01925 752159
E: dunhamwindows@hotmail.co.uk
www.dunhamwindows.co.uk

Xross interiors
16 the cross lymm cheshire wa9 0hu
01925 758298
xrossinteriors@live.co.uk

Come and see our Home and Gifts department
curtains • blinds • carpets
vinyls • poles & tracks • giftware
design and consultation

Statham Lodge Hotel

Winter

December

Christmas Luncheons
Sunday - Friday £16.50 p.p.

Dinner Dances
Wednesday & Thursday £35 p.p.
Friday & Saturday £37 p.p.

January

Tribute Party Nights
Friday 8th Neil Diamond
Saturday 15th The Blues Brothers
3 Course Dinner, Entertainment
& Late Bar £24.95 p.p.
Party Night & Accommodation £45 p.p.

For enquiries & bookings
please contact Reception on
01925 752204

Warrington Rd, Lymm, Cheshire, WA13 6SP
T: 01925 752204 W: www.stathamlodge.com

All set for Dick


LYMM village will be turning back the clock to Victorian times for the annual Lymm Dickensian Festival which takes place on Saturday December 11.

The event is once again being organised by Lymm Rotary Club and Lymm Roundtable.


There will be various stalls and activities taking place in the village centre throughout the day, with the

parade setting off from the Lymm Hotel at 1.30pm.

It is the 5th year running the two local organisations, supported by the parish council, have organised the event which attracts thousands of



SB PT
SB PREMIER TRAINING
sbpremiertraining.co.uk



Want to lose those extra pounds, increase fitness or just feel better in everyday life?

MEN'S FITNESS AND DIET CLUB
with
Steven Bartle

Just £5 per session

Steven Bartle is an Advanced Personal Trainer with a unique background as a Royal Marine Commando

Classes at local centres
Maximum 30 people

To secure a place call Steven on 07815 583147

Surprise your children with a letter from Father Christmas!



Imagine the look of happiness on your child's or grandchild's face when they receive their very own personalised letter from Father Christmas.

As well as a personalised letter, they will receive a Christmas card, Christmas story and a bookmark for being good throughout the year. This is all delivered in a festive envelope just before Christmas.

ONLY
£4.99



(L-R) Rotarian Mike Boothman, Father Christmas alias Don Smith, meeting sisters Kate aged 4 and Anna Martin aged 6 and Rotarian Mike Wood.

PLEASE PRINT CLEARLY. Please make your cheque/postal order payable to 'Roxi Greetings' and return this form to:
Roxi Greetings, PO BOX 1170, PETERBOROUGH, PE2 2HP.
Only £4.99 for each child's letter pack.

Child's full name:
Address:
.....Post Code:

Second Child
Child's full name:
Address:
.....Post Code:

Sender:
Address:
.....Tel:

Please continue on a separate sheet & attach if required.
ORDERS MUST BE RECEIVED BY DECEMBER 15th 2010. Ref: LL020

Alternatively, you can order online at www.roxigreetings.co.uk using the above reference number.



LYMM METALS

Buyers of all grades of scrap metal

Copper, Brass, Lead, Steel, Gold, Silver
and High Value Metals

Specialists in Computer Scrap

Tel: **01925 756376**

Mobile: **07831 107525**

Waste Licence No. CMS/134 720

Souvenir
Programme

Dickensian Christmas Festival

Saturday, 11th December, 2010
from 11am

For more information visit www.lymmdickensian.org

Supported by



**ROTARY CLUB
OF LYMM**



**LYMM
ROUND
TABLE**



**Lymm
Parish Council**

Don't forget!

Carols around the Cross
Christmas Eve 7-8pm – All Welcome

Village prepares for Dickens of a Christmas

A brief introduction from the organisers



AFTER one of the best ever Lymm Dickensian events last year the Rotary Club of Lymm and Lymm Roundtable have once again teamed up to help organise this year's annual event, which is also financially supported by Lymm Parish Council.

Taking place on Saturday December 11 with various stalls and activities taking place in the village centre throughout the day, the annual parade will set off from the Lymm Hotel at 1.30pm.

Organising committee Chairman Mike Evans said: "Last year was one of the most successful events in the long history of the festival and we are hoping to make it even better this year, with even more street musicians involved in the procession."

Boost

The event attracts an estimated 8,000 people into the village providing a boost for local traders just before Christmas.

It also provides a major boost for local charitable organisations who raise an estimated £20,000 from various stalls and street collections.

It is the 5th year running the two local organisations, supported by the

parish council, have organised the event which attracts thousands of people into the village centre.

Meanwhile Santa will be taking to the streets of Lymm on the Rotary float, starting on December 6.

The event was first started about 25 years ago by the late Monica Spence.

Any one who wants more information about the event or to book a stall should call Mike Evans on 01925 755765.

The full list appears below.



Venue	Entertainment	11.00	11.30	12.00	12.30	1.00	1.30	2.00	2.30	3.00	3.30	4.00	4.30	5.00
Village Centre	Santa's Grotto			→	→			→	→					
Village Centre	Lymm High School Band			→										
Village Centre	Punch & Judy Show / Magician			→	→				→		→	→		
Village Centre	Bollin & Stamford Morris Dancers		→	→					→	→				
Village Centre	Stilt Walker	→	→	→	→	→	→	→	→	→	→	→	→	→
Village Centre	Bulls Hitters	→	→							→	→			
Village Centre	Fairground attractions	→	→	→	→	→	→	→	→	→	→	→	→	→
Village Centre	Seven Swords Morris Dancers							→	→	→	→			
Village Centre	Street Entertainers			→	→	→	→	→	→	→	→	→	→	→
Village Centre	Craft/Jewellery stalls	→	→	→	→	→	→	→	→	→	→	→	→	→
Village Centre	Warrington Pipe Band							→	→					
Village Centre	Singers		→	→										
Village Centre	Street Entertainment	→	→	→	→	→	→	→	→	→	→	→	→	→
Lower Dam	Funhouse	→	→	→	→	→	→	→	→	→	→	→	→	→
Council Chambers	Lymm Artists' Exhibition	→	→	→	→	→	→	→	→	→	→	→	→	→
U.R. Church	Lymm Concert Band								→	→	→	→		
Youth Club	Craft Stalls	→	→	→	→	→	→	→	→	→	→	→	→	→
Maple Lodge	Local Craft Stalls	→	→	→	→	→	→	→	→	→	→	→	→	→
Village Centre	Kids Busking Group									→	→			
Through Village	The 'Grand Parade'						→							



Are you looking for a good time while helping others?

Over the past six years, Lymm Rotary Club has donated more than £35,000 to local charities and also tackled worldwide issues including polio

The Rotary Club of Lymm

Come and join us and have fun while helping your local community

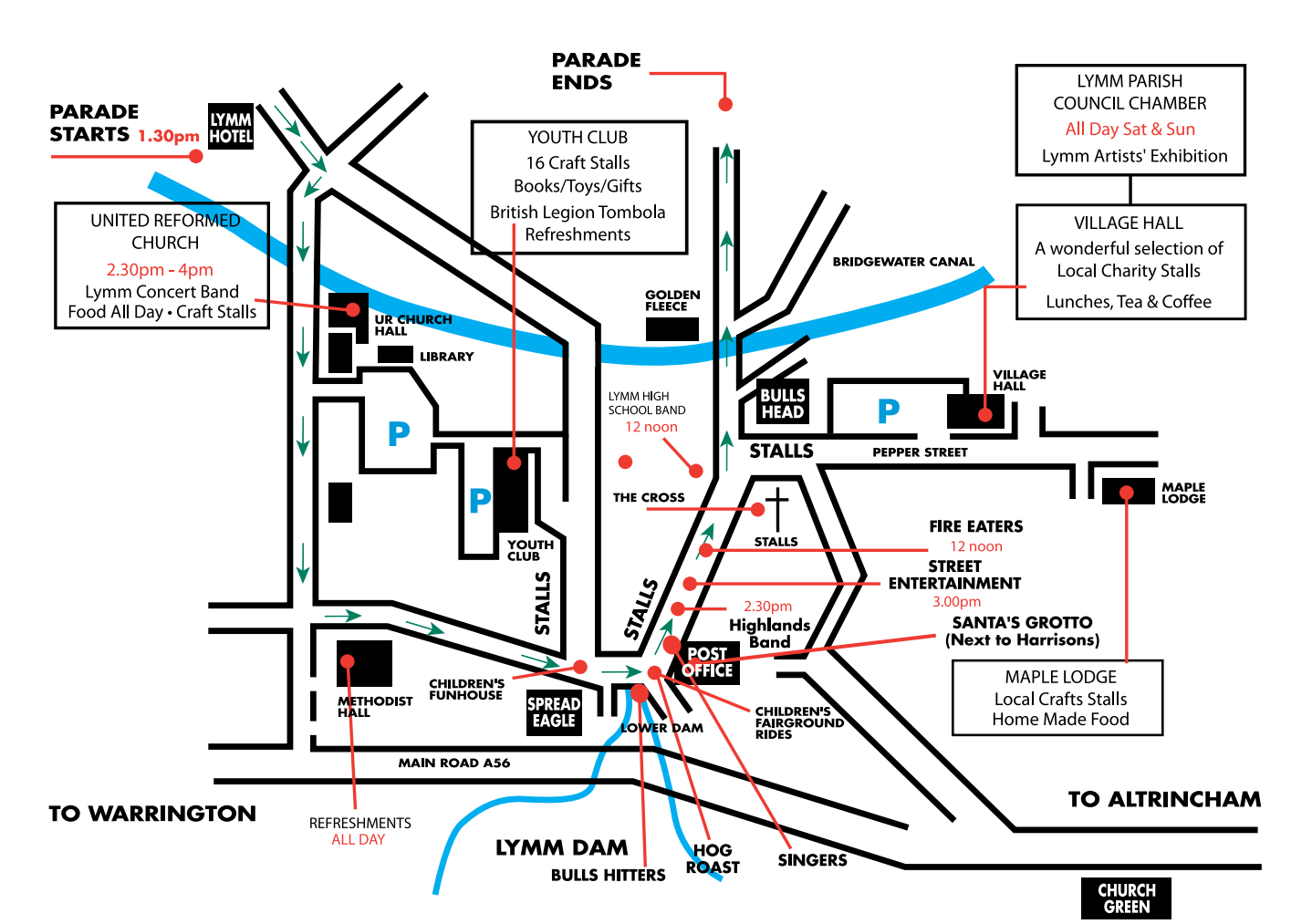
Contact Club Secretary Neville Davies for further details on

01925 755757

Grand Parade

(Starts 1.30pm, Lymm Hotel)

Chairman of Lymm and District Round Table
 President of Lymm Rotary Club
 2nd Altrincham Boys Brigade Band
 Town Crier
 Mayor's Carriage
 Bollin Morris Dancers
 Ravenbank School Parade
 Seven Sword Dancers
 Bulls Hitters
 Little Bollington School Parade
 Parish Councillor 4 Seater Vehicle
 Cherry Tree School Parade
 Fisherman's Friend - Vintage Car
 Jim Beswick - Clowns
 Statham School Parade
 Earl of Stamford Morris Dancers
 Fred Sharpe Dray
 Father & Mother Christmas Float
 Warrington Drum and Pipe Band
 Classic Car Club
 Brass Band
 Ainsley Carriages
 Vintage Citroen
 Penny Farthings
 Oughtrington School Parade



A very big 'Thank You' to all the generous sponsors, local societies and friends without whom this day would not be possible

Please support those who support us by looking out for the **red posters** in shop windows!



ARCHES	BEE CHIC	HOPKINSONS BUTCHERS	CROSS INTERIORS	THE LYMM ARTISTS
LAURA'S CHOICE	HARRISON'S STATIONERS	KARL WELSH FLORIST	THE TERRACE HOPKINSONS DELICATESSEN	LAWLERS HAIRDRESSERS
LYMM PARISH COUNCIL	LYMM ROUND TABLE	CHESHIRE SET NAIL BOUTIQUE	THE SWEET SHOP	LYMM LIFE
RUSHGREEN SERVICE STATION	W H LILL SOLICITORS	GASCOIGNE HALMAN	BANNER & CO ESTATE AGENTS	LYMM CHIP SHOP
SEXTONS VILLAGE BAKERY	FLAVOURS & ELMAS RESTAURANTS	RIDGEWAY RESIDENTIAL ESTATE AGENTS	SWEENEY TODDS	ROTARY CLUB OF LYMM
CHESHIRE BUILDING SOCIETY	LYMM FESTIVAL COMMITTEE	JOHN EMBLETON	SPREAD EAGLE	CAFE SALAR
MIKE TANDY JOHN BURROWS	CLOTHES BOX	BACCI ITALIAN RESTAURANT	LYMM ELECTRIC	THE VENUE

Events of a Christmas!

people into the village centre.

Meanwhile The Rotary float will be taking to the streets of Lymm once again starting on December 6.

The full Rotary float list is:

Mon 6th Dec

Rushgreen (1) – Assemble: Farmers Arms Rushes Mdw, Chaise Mdw, Springfield Ave, MooreGrv, Reddish La, Springbank Gdns, Rushgreen Rd, Green Vw, Adey Rd, Howard Av, Lodge Cl, Richmond Dr, Church Vw, Whitefield Gr, Warburton Cl, St Peters Clo, Bollin Dr, Bollin Cl, Reddish Cr, Linden Clo.

Tues 7th Dec

Rushgreen (2) – Assemble; Bucklow Gardens Rushgreen Rd, Bucklow Gardens, The Greenacres, Rush Gds, Fletcher La, Grasmere Rd, Mardale Cr, Thirlmere Dr, Dairy Farm Cl, Stamford Ct.

Wed 8th Dec

Booths Hill (1) – Assemble ;Dingle Bank Close Lakeside Rd ;Baycliffe; Elmtree Rd; Oaklands; Parkwood; Cherry Lane(upper); Lady Acre Cl, Huntsfield Dr ; Booths La; Highfield Dr; Hilltop Rd; Highfield Rd (top).

Thur 9th Dec

Booths Hill (2) – Assemble;Booths Hill House Cherry La(lower), Cherry Tree Ave, Old Smithy Lane, Wychwood Av, Heyes Dr, Edgerton Rd, Lyme Gr, Hardy Rd, Highfield Rd(lower), Massey Brook, Massey Ave.

Fri 10th Dec

Booths Hill (3)-Assemble;Camsley Bridge Garage, Booths Hill Rd, Princess Rd, John Rd, David Rd, Thornley Rd, Barsbank, Barsbank Clo, Daisy Bank Rd, Oak Rd, , Moston Grove, Ridgeway Gdns, Grove Av, The Anchorage, Eagle Brow, Brookfield Rd, Maltmans Rd.

Sat 11th Dec

Dickensian Day

Sun 12th Dec

Sainsbury's Warrington 10am – 4pm

Mon 13th Dec

Thelwall (1) – Assemble: All Saints Drive Woodlands Dr,All Saints Dr, Parry Dr, Moore Ave, Woodlands Dr, Wilson Cl, Stanton Rd, Pickering Cre, , Selworthy Dr, Beech Av, Barley Rd, Dunmow Rd.

Tues 14th Dec

Thelwall (2) – Assemble Bradshaw Lane Bradshaw La, Ollerton Clo,

New Road, Mottram Clo, Richmond Av, Ashley Clo, Pelham Rd, Welwyn Clo, Harlow Clo, Walden Clo.

Wed 15th Dec

Thelwall (3) – Assemble;Prestbury Dr. Prestbury Dr, Handforth Cl, Alderley Rd, Moberley Cl, Wilmslow Cre, Gig La.

Thur 16th Dec

Statham – Assemble; Lymm Hotel Statham Av, Statham Clo, Statham Dr, Lymington Av, Star La, Pool La, Brookside Ave, Oldfield Rd, Warrington Rd Turnbury Cl, Whitesands Rd, Jubilee Gdns, West Heath, Albany Rd, Northway, Sycamore, Albany Dr, Albany Cres.

Fri 17th Dec

Oughtrington/Sandy Lane – Assemble; Oughtrington Cres. Stage La, The Paddocks, Crown Grn, Whitebroom, Sandy La, Hopefield Rd, Ashcroft Rd, Woodbine Rd, Birchfield Rd, Cedarfield Rd, Sandy La.

Sat 18th Dec

The Cross 9am – 3pm

Mon 20th Dec

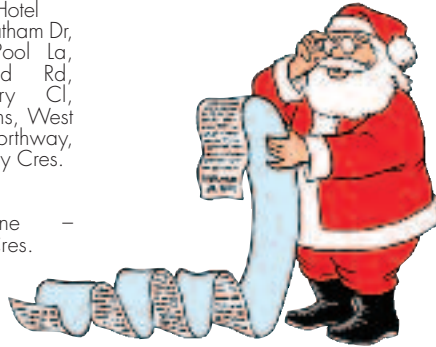
Higher Lane (1) – Assemble; Crouchley Lane. Crouchley La, Manor Rd, Higher La, The Crescent, Mayfield Vw, Greenwood Rd, The Hatchings, Higher La, Grammar School Rd, Scholars Grn, Limefield Ave, Churchwood.

Tues 21st Dec

Higher La (2) – Assemble: Woodlands Av. Woodlands Ave, Woodlands Dr, Longbutt La, The Seasons, Oughtrington Lane, Cotebrook, Foxley Clo, Higher La, Bellsfield Clo.

Wed 22nd Dec

Village – Assemble: Davies Way Car Park. Danebank Rd, Lymmhay La, Brooklyn Dr, , Millbank, The Cross, Pepper St, Grove Rs, Rose Bank, Hartley Close, Crossfield, Racefield Cl, Cyril Bell Cl, Orchard Ave, Fairfield Rd,Rectory La, Rectory Gardens.



GASCOIGNE HALMAN
 THE AREA'S LEADING INDEPENDENT ESTATE AGENCY
 Newly Refurbished Shop at 6 The Cross Lymm, WA13 0HP
01925 758345
 lymm@gascoignehalman.co.uk

See Chic
 Frocks
 Casual Wear
 Shoes
 Bags
 Jewellery
 Mens
 Formal Hire
 17 The Cross, Lymm, Cheshire
 Tel: 01925 756683

LYMM PARISH COUNCIL
 Lymm Parish Council are pleased to support Lymm Dickensian Festival

WILLIAM H. LILL + Co.
 Your local solicitor specialising in:-
 Conveyancing
 Wills & Probate
 Accident & Personal Injuries
 Divorce & Family Law
 A friendly service for all your legal needs
 Telephone: 753170 / 755668
 9 The Cross, Lymm WA13 0NY

Lymm Twin Town Society
 Founded with a feast in 1968
 Social events for all ages interested in French language and culture

 Boulogne's New Year Evening
 Thurs 18 Nov 2010
 Noel Arrive (Drama fun & carols)
 Sun 19 Dec 2010
 Annual exchange
 1 - 5 Jun 2011
 Enquiries Tel: 756361 or visit www.lymmtowntownsociety.co.uk

Jo Jingles is Here!
 Fun Music, Singing & Movement Classes for children aged 3 months to 5 years
 Develop your child's
 • Social Skills • Confidence • Co-ordination
 • Language • Listening Skills • Imagination
 Children's Parties & Nursery Sessions also available!
 Introductory Offers
 3 sessions for £10 OR babies under 6mths go FREE
 Classes available at Lymm Rugby Club on Wednesday mornings and NEW baby class starting from 3 months
 For details call Jacqui on 01925 269136 / 07782 338012
 jacqui@nelamb_1@hotmail.com
 www.jojingles.com/southmanchester

Trattoria
BACI

18 The Cross, Lymm.
Tel: 756067

BibA Boutique
 New collections for Christmas
 miss VICKY MARTIN
 Footwear by: RAVEL LACUZZO
 Monday-Saturday 10am to 5.30pm
 LATE NIGHT Thursday 7pm Sunday by Appointment
Tel: 01925 757508
 Chaise Meadow, Heatley Mere, Lymm WA13 9EL

Ghosts of Christmas Past

THE Lymm Youth and Community Centre is set to become a cinema on December 7 with a special one-off showing of The Winter's Tale at 7.30pm - a one hour historical documentary about Christmas and Winters in Lymm over the past hundred years.

The film includes fabulous footage of wartime skating and ice-hockey on the dam. The scene will be set for the evening by Lymm's own history man Joe Griffiths recalling some of the features of Christmases past in Lymm backed up a photo display. Members of the public are invited to bring along their own pictures and memories to share too.

Tickets are £7.50 - concessions £5 from Lymm Electric, Rush Green Service Station or the Youth Club (open Sundays).

Proceeds in aid of Youth and Community Centre funds and Lymm Festival. Tickets include light festive refreshments.

One of the organisers Su Williams said: "This is a great opportunity to get in the true festive spirit and at the same time see what a great job is being done by Neville Davies and his team in turning the centre into a great facility for the village. The team hope that this could be the first of many village cinema nights!"



Pictures shows L-R Mrs Betty Hughes (St Rocco's Hospice Lymm), Julia Grey (Children's Adventure Farm Trust), Worshipful Brother Tony Bone (Master of Domville Lodge 2009/10), Catharine Lewis (Russett School) and Jill Fuller (Cancer Research Lymm).

Masons donate to charities

MEMBERS of a Lymm Freemasons group held a Giving Evening to celebrate its donations to local charities.

Domville Lodge, which meets at the Spread Eagle Hotel, marked its £1,510 local donations during the past year.

The Lodge invited members' wives, families and friends together with representatives of recipient charities to the Lodge Room. Guests from the charities talked about their work and how the money donated would be used. After the presentations everyone enjoyed a three-course meal.

For the year up to February Worshipful Brother Harry Anthony Bone (Tony) was Master of the Domville Lodge. During the year more than £3,000 in total was raised by social events.

Donations to local charities were - Royal British Legion Lymm Branch, £110, St Mary's Parish Church, Lymm, £300, St Rocco's Hospice Shop, Lymm, £150, Russett School for Special Needs Children, £250, Sevre Trust (which provides school equipment for children in India) £250, Children's Adventure Farm Trust, Millington, £250 and Cancer Research, Lymm, £200.



David Carey Joinery Services

All aspects of building work undertaken by fully qualified and skilled tradesmen

Extensions & Refurbishments • Flooring & Decking
Kitchen's Supplied & Fitted • Loft Conversions
Windows Supplied & Fitted • Roofs

Tel: 01925 240429 Mob: 07790 396961

An honest, friendly, reliable fully insured service with free estimates all work guaranteed

WR
white
rooms

Conveniently located in the centre of Lymm Village

**SPORTS INJURY
& ORTHOPAEDIC
CLINIC**

Physiotherapy treatments

From
£30

Call now to book an appointment...
Telephone: 01925 752333

Our team of highly qualified chartered physiotherapists use state of the art treatments and techniques to assist in the fastest recovery.

COMMON INJURIES TREATED:

- Spinal Injuries + Whiplash
- Low Back & Neck Pain
- Sports Injury Assessment
- Post Op Rehabilitation
- Knee Injuries
- Shoulder Injuries
- Sprains & Strains
- Hamstring & Groin Injuries



SKI SEASON HAS ARRIVED!

White Rooms can offer pre ski assessments and treatment for persistent injuries prior to your trip. White Rooms can also offer full assessment, medical imaging and treatment of injuries that you may pick up whilst away.



Knee Injury Treatment

From
£30

From
£350

Full Knee Injury
Assessment + MRI Scan

DIRECT ACCESS TO MEDICAL IMAGING:

MRI Scan from **£299**
Musculo-Skeletal Ultrasound Scan from **£160**
Ultrasound Injection Therapy from **£260**

11 Henry Street, Lymm, Cheshire WA13 0LT

www.whiteroomsltd.co.uk

PHYSIOTHERAPY • SPORTS INJURY • ORTHOTICS • NUTRITION • PERSONAL TRAINING • RADIOLOGY

Rare Roman coins are treasure!

RARE Roman coins unearthed in a farmer's field near Lymm have been declared national treasure.

A Warrington inquest has declared that the silver Roman coins unearthed by amateur archaeologist James Balme, who is well known for his discoveries of Roman treasures in the Lymm area, are national treasure.

It is the second such case for James in the past three years.

A delighted James, who will now receive a financial reward for unearthing the coins, said: "This is another great result and recognition of the contribution to the understanding of Roman Northwest of England that I am making."

He has been searching the area for over a decade to find evidence of its Roman past. In 2006, he discovered a Roman silver snake bracelet, which was declared National Treasure and he has now unearthed eight rare Roman silver coins.



He believes the coins are part of a bigger hoard still buried and he notified the British Museum accordingly. Using his metal detector, James made his second discovery of buried treasure consisting of eight Roman silver Republican Denarius coins, dated between 252 BC and 2 BC.

"Most Roman coins found are from the 1st or 2nd centuries AD but these are older Republican coins and come from a time before the Roman Empire," he said.

He believes the coins were used to pay Roman soldiers who were pushing North with their military campaign and were hidden but never collected.

"I think once they reached the River Bollin they buried the coins because of the local Brigantes, a Celtic tribe who controlled Northern England but, for some reason, never came back for them."

"It's very exciting because they're extremely rare."

Under the Treasure laws, a discovery of six or more such coins from one site is classed officially as a Roman hoard.

"There is clearly still an untold Roman mystery here that I am uncovering slowly year by year, my work will continue for many more years to come," added James.



James Balme with his trusted metal detector and a close up of one of the coins.

Planning veto

PLANNING chiefs have refused permission for a change of use of an outbuilding at a house in Brookfield Road, Lymm, to a separate dwelling with a conservatory at the front.

Planners visit building site

PLANS to demolish an industrial building at the rear of Mill Lane, Lymm and replace it with a detached house were recommended for refusal by planning officers.

But members of the borough's planning sub-committee decided to visit the site before reaching a decision.

Officers argued that although a new house would not cause harm to nearby residents and the development would not have a significant impact on the Green Belt, it would add to the borough's existing surplus of housing land and for this reason was unacceptable.

Local residents supported the scheme on the grounds it would remove derelict and wasted properties and Lymm Parish Council offered no objections.

The scheme was to be considered again by planners as Lymm Life went to press. To find out the result, visit www.lymmlife.co.uk



Catyas Cadeaux

EXCLUSIVE GIFTS

| The Grove, Lymm, Cheshire, WA13 0HW
e: info@catyascadeaux.co.uk w: www.catyascadeaux.co.uk
t: 01925 754777

Opening Monday 15th November

Hotel finally wins its 15-year battle

THE long-running planning battle over proposals to extend the Lymm Hotel with a leisure centre, conference facilities and additional bedrooms has ended in victory for the hotel.

It was more than 15 years ago that plans were first submitted and, over the years, nearby residents consistently opposed them.

Planners did approve a conference facility and two-storey bedroom block in 1999 but the development never went ahead. Plans to demolish the hotel completely and replace it with 62 apartments were thrown out six years ago.

The new proposals were again opposed by residents, although they

did admit they were probably the most acceptable of all submitted over the years.

Members of the borough council's planning sub-committee agreed and gave the go-ahead, subject to a number of conditions, including one that restricts the hours of the leisure centre to 7.30am-10pm.

The extended hotel will have a swimming pool, gymnasium, conference and business facilities and 29 additional bedrooms. Existing

bedrooms will also be renovated.

Objectors stressed throughout their campaign that they wanted to see a successful, viable hotel on the site and were not opposed to development in principle.

The Lymm Hotel is one of the oldest in the Warrington area and in the past has attracted numerous celebrity guests, including Australian cricket teams and, in 1966, the Brazilian World Cup team, including Pele.

School's new £17,000 library

HIGH Legh Primary School celebrated the opening of its new £17,000 library with a day of special events.

Local story teller Honor Giles performed the opening ceremony and entertained children with some of her tales. Each child was presented with a commemorative mug and a bookmark, donated by the Parent Teacher Association.

More than £6,000 of the cost of building work, furnishing and stocking with books came from PTA fundraising events over the last 12 months, including a summer fair, discos, film and popcorn evenings, Sunday teas, craft fair and the High Legh 10K race. Before the library opened, the school's books were stored on shelves at the back of a classroom.

Head teacher Louise Robbins said: 'In this time of cutbacks and recession it is amazing to see the achievements of our PTA, staff, families and community in raising enough money to build and resource a beautiful school library. Our library will be at the heart and soul of High Legh Primary School providing a place for children to browse, dream and find out more about the world.'



De Sousa Wines
-Portuguese Fine Wines-

Christmas Special Offers

Red, White, Rose or mixed case
6 bottles for only £30

Gold Medal and Kosher Wines available

FREE local delivery

To order call Maria De Sousa

TEL: 01925 754 444 or 07974 0357 47 / EMAIL: maria@desousawines.co.uk



Tabley House Nursing Home

Providing Excellence In Care of the Elderly

including:

Nursing & Residential Care, Palliative Care
Post Operative Care, Convalescence Care, Day Care,
Respite Care, Care of the Elderly with Dementia

For further information or to arrange a viewing contact:
Matron Karen Lynskey or Deputy Matron Liane Topham

Tabley House, Tabley Lane, Knutsford, Cheshire, WA16 0HB
Telephone: 01565 650 888
www.tableycare.co.uk

Whatson
BREAKFAST LUNCH DINNER
at
SALAR

Open 7 days

Live at Salar Sunday

Join us at Cafe Salar for a
Sunday afternoon
live music from 2.00 pm - 8.00 pm

Cafe Salar are proud to present Live from 9.00pm
On Thursday 4th November

The Nightbreakers

Christmas Lunches & Dinners
Available throughout December
in addition to our normal menu
Book Now!

FAMILIES WELCOME!
(Baby changing facilities & highchairs)
Introducing our new
Bambino Childrens Menu!
3 courses + drink for only £5.95

THE CROSS
LYMM, CHESHIRE
01925 754 444

Open 7 days

Sunday
Breakfast served from 10am - 11pm
Lunch served from 11am - 4pm

Monday - Saturday
Breakfast served from 9am
Lunch from 11am - 4pm
Dinner served from 5pm - 10pm





Author visits school



CHILDREN'S author David Whitley visited Lymm High School to present a lively introduction to the craft of writing fantasy fiction to Year 7 pupils.

He also signed copies of his two books 'The Midnight Charter' and 'The Children of the Lost' for pupils.

The visit gave pupils the unique experience of meeting an author and provided the opportunity to for them to ask questions about any aspect of creating and writing children's fiction.

elmas 
 MEDITERRANEAN CUISINE
 Tel: 01925 756049 www.elmasrestaurant.co.uk
 2 Pepper St, Lymm WA13 0JB
Christmas Menu Now Available
New Year's Eve Set Menu
3 Courses £25
 Wide range of Starters, Main Courses, Desserts & Coffee available 


FLAVOURS
 FINE TURKISH CUISINE

We are now taking Christmas bookings
 Choose from a delicious choice of Starters, Main Courses, Desserts and Coffees
Evening only £25
 15b The Cross, Lymm, Cheshire WA13 0HU Tel: 01925 753079
 www.flavoursuk.co.uk

A MAGICAL CHRISTMAS IN STORE FOR YOU

Fryer's
 GARDEN CENTRE



SANTA ARRIVES - SAT 27 NOV 11AM

Take the chaos out of Christmas. Look no further than Fryers. With its vast array of dazzling decorations, 1000's of inspirational gifts and plenty of other festive fayre you'll have Christmas wrapped up in no time. Perfect!

☆ Open every day ☆
 ☆ Free Parking ☆

 Refreshingly good food all day...everyday

On the A50 one mile north of Knutsford
 Telephone 01565 755455 www.fryers.co.uk

Dining Out with Lymm Life

at the Church Green

RATED as one of the top 10 per cent of restaurants in the country after being awarded three coveted AA rosettes The Church Green has a lot to live up to - and doesn't disappoint.

It provides a unique dining out "gastro pub" experience in the village and is ideal for that special occasion.

Chef/proprietor Aiden Byrne is clearly passionate about food and takes time to talk to his customers ensuring he has his finger on the pulse of his business.

Having been head chef at The Grill at The London Dorchester and with numerous TV appearances, including Masterchef, he became the youngest chef ever to win a Michelin star at just 22 - so he clearly knows what he is talking about.

Last summer The Church Green was ranked as one of the "The 20 best places to eat in Britain" and with a menu that changes on a regular basis there is plenty on offer to excite your taste buds.

While we enjoyed White onion and parmesan soup as our appetiser there was also a choice of middle white pork belly with scallops, parsnip and apple pan fried smoked foie gras, confit chicken ravioli, chestnut and shallots, hazelnut gnocchi, Jerusalem artichokes and parma ham, salt cod mousse, fennel puree or poached quail eggs.

The 12oz prime steak with roasted garlic, polenta and bone marrow, was cooked to perfection, while the Texel lamb with baby figs, black olives and basil proved another satisfying main course.

Other choices on the menu included middle white pork belly with scallops, parsnip and apple or roasted hake with braised garden vegetables.

For traditionalists there is also a classic pub menu which includes 10oz sirloin steak, cod and chips, Fleetwood scampi and chips, chicken and mushroom pie, pork belly, thyme mash and apple, cottage pie, deep fried chicken and chips and fish pie.

For those with a hearty appetite there are also a variety of sweets to choose from including salted peanut brittle, banana foam, rum and raisin, caramel parfait, milk and honey, hot chocolate fondant, vanilla ice-cream and popcorn and apple and blackberry crumble with custard mousse.

There is also an all day lounge menu with soup of the day, meat platter, ploughman's platter, chicken aglio olio, Queenie scallops and



sandwiches.

So whether you're looking for somewhere to celebrate a special occasion or simply some quality food, with prices to suit a range of pockets,

cooked by people with a passion for food, The Church Green awaits your call - and book early to avoid disappointment as weekends are always busy.

To feature your restaurant or pub in a future dining out call James Bryan on 0800 955 5247



*** CELEBRATE CHRISTMAS AT THE SPREAD EAGLE** See us on

The Spread Eagle is proud to present our Christmas menus. * We start at £7.25 for a light 3 course meal in the day time and of course are full festive menus with all the trimmings. * Larger parties may wish to have a private function room with a bar. * perfect for office parties add some music and have fantastic fun.

On Christmas Day we will have a comfortable family atmosphere and our menu will take all the pressure of you. Only one sitting.

* New Years Eve - an evening of dining, live music, table magic and a late supper, tickets £30. Please call in for a set of menus and details *

Spread Eagle, 47 Eagle Brow, Lymm, Cheshire, WA13 0AG
Tel 01925 757467 Email spreadeagle@jwlees.co.uk



BE YOURSELF

JOLLY THRESHER



Higher Lane - Broomeedge - Lymm, Cheshire

Try our new two courses for £9.95
lunchtime and early bird menus available 12-2.30pm
and 5.30-7pm mon-fri

Bookings now being taken for Christmas Parties

Live music with "Blooze The Ploc" - 4th December

Party Nights 9th & 16th December

New Year's Eve Party, Disco and Buffet
Tickets Now On Sale

Jenny, Mark, Olivia and staff welcome you all to the Jolly Thresher, our newly refurbished local pub with fabulous restaurant, outside terrace and huge beer garden.

Good home-cooked food from our new menu, plus fine ales and wines, are served every day. Enjoy a great atmosphere and friendly service in our family-run pub.

Please call for reservations

Tel: 01925 752265

Dining Out with Lymm Life

at the Bears Paw

WE have said it before, but it has to be said again. There is no place to dine out that has a cosier atmosphere than the Bears Paw.

It may well have originally been a farmhouse in the 17th century but it has been a pub for longer than anyone living can remember and, standing on the A50 Knutsford Road at High Legh, looks every inch a traditional English inn.

Hosts Jason and Melanie Craig lead a friendly team to ensure the food and the service are first rate.

On our most recent visit we started our meal with pan fried creamy garlic and Stilton mushrooms served on garlic bread and smoked haddock and spring onion fishcake, also pan fried. Both are favourites of ours, but there is a wide range of other equally delicious starters.

For our main course we chose, from a lengthy a-la-carte menu, augmented by the day's chalkboard specials, escalope of chicken with herb and garlic butter and sea bass marinated in

extra virgin olive oil, lime and coriander. We had a choice of chipped, mashed or jacket potatoes and both meals were served with tasty fresh vegetables. Our compliments were duly passed on to the chef!

Most of the Bears Paw's desserts are made on the premises and whether you go for a homely bread-and-butter pudding or a classic Eton Mess, are suitably decadent!

Jason and Melanie make a point of sourcing their food locally, wherever possible, with bread delivered daily from Lymm, fresh meat and fish also delivered daily and ice cream from Dunham Massey.

They provide remarkable quality at value-for-money prices - and if you can get there between 6-7pm, Monday to Friday, there is an Early Bird menu that offers even better value.



The chefs of tomorrow

A NEW dining-out venue is to open shortly in Lymm - featuring the culinary expertise of the chefs of tomorrow.

The "restaurant" is at Lymm High School and the food will be served by B Tech National Diploma in Hospitality students in the Sixth Form.

A special opening night will be held on Thursday, November 18, when the students will lay on a lavish three-course meal for members of the PTA, who raised money to provide the restaurant.

Head of catering Linda McLeish said: "It is our way of saying thank you to the PTA. Later the restaurant is to open to the public one evening a week."

Bears Paw

Country Inn & Restaurant

Now taking bookings for Christmas Fayre
Three Course Menu £19.95
Christmas Day Five Course menu £49.95

Join our Birthday Wine Club for a free bottle of wine on your birthday, and special offers around the year. Pick up your card in the pub.

Early Bird menu available Mon - Fri 6pm till 7pm
Two Course £9.95
Three Courses £12.95

Also available Sunday Lunch Set Menu
 12pm till 3pm **Two Courses £9.95**
Three Courses £12.95



*Looking forward to seeing you soon
 Jason, Melanie and all the staff
 at the Bears Paw*

Tel: 01925 752573 Warrington Road, High Legh

FESTIVE MAGIC

THE LYMM HOTEL

NEW YEARS EVE
 NEW YEARS EVE BALL - £63.50 PER PERSON
 NEW YEARS EVE FAMILY BUFFET - £42.50 PER PERSON,
 £22.50 PER CHILD UP TO 12 YEARS. £12.95 CHILDREN UP TO
 3 YEARS OLD

CHRISTMAS DAY LUNCH
 £63.50 PER PERSON £29.95 CHILDREN UPTO 12YEARS OLD
 £12.50 CHILDREN UPTO 3YEARS OLD
 BOOKINGS FROM 12.00 NOON - 4PM

CHRISTMAS EVE DINNER DANCE
 FRIDAY 24TH DECEMBER 2010 7.30PM - 12MIDNIGHT
 £24.50 PER PERSON

Book 20 Guests and Get 1 Free

Book an exclusive party for over 80 people and get a free welcome drink for each partygoer

Party night dates still available!
 Murder Mystery 30th October £23.50 per person including 3 course meal
 PLEASE FEEL FREE TO CONTACT US TO MAKE AN ENQUIRY OR TO MAKE A RESERVATION.

Tel: 01925 752233
 Whitbarrow Road, Lymm, Cheshire WA13 9AQ
 Email: general.lymm@macdonald-hotels.co.uk www.macdonald-hotels.co.uk/lymm

the ChurchGreen

bar & restaurant

Follow us on
Facebook & Twitter





To celebrate our 2nd Anniversary
 we are offering the A la Carte menu
 as a 3 course set menu at £35 per person

Great value Early Bird Menu
 available between 12 - 3pm and 6pm - 7.30pm
 2 courses for £18.50 or 3 courses for £22.50

Christmas 3 course menu for £28
 from 15th November to 24th December

Call in to enjoy our homemade Mulled Wine at the bar
 It will warm your cockles!

Take a look at the Menu's on our website: www.thechurchgreen.co.uk
 We look forward to sharing the Festive Season with you!

Tel: 01925 752068 Email: reservations@thechurchgreen.co.uk
 Higher Lane, Lymm WA13 0AP

UP TO **£50 OFF**

IDEAL CHRISTMAS GIFT

OVER 50 SELECTED GARDEN TOOLS*
FOR A LIMITED TIME ONLY

For purchases made from 9th October to 30th November 2010
*Terms and conditions apply

STIHL VIKING

YOUR LOCAL GARDEN MACHINERY SPECIALIST

DUTTONS
MOWERWORLD

Opening Times:
Mon-Fri 8.30am-5pm
Saturday 8.30am-1pm

Tel: 01925 740217

The Smithy, Chester Road, Daresbury, Warrington WA4 4AJ
www.duttonsmowerworld.co.uk

Pupils dress to impress

PUPILS at Cherry Tree Primary School, Lymm came to school dressed as their favourite book characters for the final day of their book week.



Front Mad Hatter Joe Harris and from left, Elliott Haskins, Lauren Cliffe, Finlay McKinnon, Emily Crouch Alex Higham and Lucy Williams.

CHRISTMAS WARRINGTON THE TOWN CENTRE

Free park and ride

Every Saturday 13 Nov - 18 Dec, 9.30am - 6pm
Buses every eight minutes from Wilderspool Park, off Wilderspool Causeway and Warrington Collegiate, Winwick Road direct to and from the Bus Interchange in the town centre.

Shops open every day

Free parking every Sunday at Cockhedge, Golden Square and council car parks.

One hour free parking at Market Multi-storey car park on Saturdays

First hour is free. Offer starts 13 November

Late night shopping until 9pm

Every Thursday 18 Nov - 16 Dec and Monday 20 until Thursday 23 Dec

Warrington
 Borough Council



Good afternoon for playgroup

St Mary's Preschool in Lymm opened its doors to prospective children and parents for its first open afternoon.

While children had a chance to play and look around parents chatted to staff about the provisions available over a welcome coffee and biscuit.

'This is the first time we have held an open afternoon and we were delighted with the response, especially given the rainy weather' said Lisa Bates, Supervisor. 'The afternoon session was a collaborative initiative involving staff and committee members, which gave everyone the opportunity to see what we have to offer on a daily basis.'

The younger children enjoyed exploring the toys and activities set up in the hall, from junk modelling and playdough to physical activities and treasure trays. During the week the role play involved a shoe shop where the children sorted and paired socks and shoes as well as measuring feet.

Thankfully the sun eventually broke through and the rain clouds cleared away, enabling St Mary's to show off their outstanding outside area. The new children were delighted to be able to drive the cars on the marked road, climb, play with the musical instruments and look at the vegetable planters.

St Mary's treasurer, Jacqui Robinson, concluded 'it is a lovely atmosphere at St Marys -my children

have been very happy here and many of the children visiting during the afternoon seemed to fit straight in. I think this will become a regular event on our calendars'.

To see more about the activities and find out when the next open afternoon will take place visit the website www.stmaryspreschool.co.uk or just drop in one morning during term time.



The Venue

Thirlmere Lodge, Rectory Lane, Lymm WA13 0AO

New Year's Eve Party!

- * Discounted drinks all night Monday
- * Our famous 'Open Mic' Night every Tuesday from 9pm
- * 2 for 1 cocktails every Wednesday
- * Live acoustic music every Thursday
- * Rachel, our resident pianist every Saturday, 7-9pm
- * Quiz Night every Sunday, starting at 8pm

Late Bar til 12pm
Thursday, Friday and Saturday

Available for private functions every afternoon and all day Sunday

Happy Hour
Sun-Thurs 6-8
Fri & Sat 3-7

* Great selection of Wine and Draught Beers from around the world: *

* **Black Sheep Carling Boddingtons** *

Thatchers Cider Amstel Peroni Guinness

* Now serving Freshly Cooked Pizzas from Elmas Restaurant - Served Every Night *

Wi-Fi Hotspot
Come along and get online for FREE

Visit our website:
www.thevenue.lymm.co.uk

Search us

Tel: 01925 756393

Dentalcare with Jill Cooper BDS DPDS

...something to smile about

Providing quality, caring, affordable dentistry

Children receive free checkups and half price private treatment, when parents are patients

Check up same as NHS	£16.50
Metal Fillings from	£39
White Fillings from	£55
Professional Tooth Whitening	£199
Crowns from	£198
Dentures from	£230
Implants placed and restored	£1200
Clear braces from	£700

Due to expansion we are able to accept new patients
Book your check up NOW!

Mouth Cancer Action Month
If in doubt, get checked out
Free Oral Cancer checks in November and December

Tel: 01925 758616
152 Rushgreen Road, Lymm, Cheshire WA13 9QW
dental-care@btconnect.com





**Proud sponsors of
Lymm RUFC under 9's**

Opening Hours
Monday to Saturday 9.30am - 5.30pm
Sunday 12 noon - 3.00pm

Just 0.5% fee for first 5 properties sold!

**Please call in to 24 The Cross, Lymm
or call 01925 759042**

*Sole Agency only. If you have already instructed another Estate Agent you must check your terms and conditions to avoid paying 2 fees.

Family tradition lives on in the fast lane!

AIDAN Collins is keeping a family tradition alive after being crowned British Shorttrack champion.

Aidan, aged 28, a former Lymm High School pupil comes from the famous Collins clan from Lymm with his father Les and uncles all racing speedway professionally.

His dad Les is a former world number 2 while Uncle Peter was Speedway World Champion! His other uncles Phil and Neil also represented England.

Shorttrack is a cross between super moto and speedway racing, and is currently the fastest growing motorbike sport across Europe.

The British championship is raced on speedway tracks up and down the country, with speeds of 50 mph - 120mph depending on the size of the track.

Aidan has gained sponsorship from the Honda racing team which have given him a good base to achieve his goals this season and next.

For more information visit www.aidancollins.com



BEAT THE VAT INCREASE! Only a few fitting slots available for December. Order Now for January!

NEW DELAWARE KITCHEN

IVORY

Need a sink?
All types of Stainless Steel & Porcelain Sinks at great prices!

Need a worktop?
EUBOUTE WORKTOP 3m length for sale
3m-4m Worktops & Breakfast Bars from **£80**

Replacement doors & handles huge range to choose from 7-10 day delivery.

ARTIS smartbase **AXIOM**

3 floors to explore! Whatever your budget we can supply!

Complete Kitchens
Free Plan & Design
We can even fit it for you for a little extra
from £3k-£5k+

Budget Kitchens
From **£499 to \$999**
Additional units available.

• 3D Plans - Bring your sizes for an on the spot free quotation • Large 3 floor showroom
• Factory clearance area • Delivery within 14-21 days • Teams of fitters

New range of Rauch Bedrooms - Shortly Arriving!

NEED A BARGAIN BEDROOM?
Ex-Displays to Clear Last Few **Less than Half Price!**

3DR & 4DR WARDROBE SETS
In 3-top colours - High Gloss White, Walnut Matt
Ex cleared from £299

Wood Burning Fires & Stoves
From £259
(Over £50 in stock)
Full installation Service by expert fitters

ECO logs made from Eucal
"We are the first in the Country to stock it!"
£11.99 a bag | 100kg

nuance BATHROOMS **New In!**

Beautifully fitted bathrooms from start to finish
2 YEARS INSTALLATION GUARANTEE

BUSHBOARD
the latest in Paneling.
CHOICE OF COLOURS

RADDON COURT
Quality Choice
LOWER WASH LANE
OLD RADDON COURT SITE
KNITSFORD ROAD

Enter WA4 1PL in your Sat Nav.

Open 7 Days
Mon-Fri 9-5 Sat 9-4.30
Sun 10.30-4.30

Trade & Developers Welcome

The Old Tannery Building, Manor Ind Estate
Lower Wash Lane Warrington WA4 1PL.

Tel: 01925 633291
Fax: 01925 417585 Email: enquiries@raddoncourt.com

Raddon Court Warehouse
Est. Over 40 Years
www.raddoncourt.com

'Stunning' new strip for girls' soccer teams

GIRLS' football teams at Lymm have 'stunning' new outfits - after years of playing in boys' cast off kits.

The Lymm Rovers Junior Football Club girls' section started in 2007 with two U10s teams, and now has almost 70 members.

Coach Gail Wade said: "Girls

football has certainly grown in Lymm since then. We are now in our fourth season of playing in the Cheshire Girls' Football League. We have five teams in total, two U14, two U12 and one U10.

"We're always on the lookout for new players, either with experience or not. Our ethos is one of enjoying sport, learning new skills but most

importantly having fun with our team mates."

The girls previously played in the boys' old cast offs, which were dark blue and light blue. But the whole club now has a new kit - and for the first time the girls have their own new strip which is dark blue and pink.

Gail said: "The kit is really nice - it is nice for the girls to be playing in something new. The kit is stunning and the girls absolutely adore it."

Anyone who would like to join the girls' section should visit a training session on Monday nights - on the astro turf at Lymm High School from 6pm to 7pm for school years four and above. For younger girls, training is on Saturdays from 10.30am until 11.45am also on the astro turf.

Further details are available from Gail on 07950843644.

Youngsters are pictured proudly displaying their new kit sponsored by Gavin Laidlaw from Dental Solutions.

Soccer club's centenary celebration

LYMM Football Club officially celebrates its centenary this month - even though their shirts bear the slogan "established 1913."

Club officials have discovered - after ordering the shirts! - that the club, formerly Lymm Old Boys, was playing in the Lancashire Amateur League as early as 1910 and may have been a founder member of the league in 1899.

A special celebration event is being held at Lymm's Spread Eagle hotel on Wednesday, November 17 when many former and present players are expected to attend.

Any former players who have not already heard about the event are asked to call Jimmy Slavin on 07737 655211.

The club, which still plays in the Lancashire Amateur League, is always keen to hear from new talent. Anyone interested should also ring Jimmy.





UNIPART



CAR CARE CENTRE

FREE Local Pick-up & Drop Off Service



AUTOSAFE
Quality Assured



Agden Park Motors



Park Garage A56, Agden Brow, Lymm

5 Star
workshop facilities for servicing and repair

Over 300
tyres
at competitive prices!

MOT Testing
petrol & diesel



BODYSHOP
01925 752235





AIR
CONDITIONING
REGAS/SERVICE

BIG ENOUGH TO COPE . . . SMALL ENOUGH TO CARE!

Contact ALLAN or GEOFF on 01925 752447

Shop Local

Welcome to our special feature which is aimed at encouraging our readers to support local businesses. Any local business wishing to feature in future editions please contact us on 0800 955 5247. Please mention this publication when responding to an advertiser.

Sophie's KITCHEN Open every day
9am - 5pm
Free WiFi

Serving Breakfast, Lunch, Light Snacks, Afternoon Tea, Coffee & Cakes, Cupcakes & Celebration Cakes available to order. Gifts & Crafts

★ Christmas Market Night 30th November 5pm-10pm ★
★ Home-made & Handmade Gifts & Craft Stalls ★
★ Mulled Wine & Raffle. Ring to book a stall ★

★ Festive Fayre starts 1st December ★
★ Gifts & Christmas Hampers, Cakes & Gingerbread Houses to order ★

THE WITCH TOWER 60 STREET 227700 Lymm, Warrington, Cheshire WA13 0JH
Lynn, Warrington, Cheshire WA13 0JH

elmas **01925
756049**

RESTAURANT & BAR

www.elmasrestaurant.co.uk 2 Pepper St, Lymm WA13 0JB

Newly opened following a bar and dining extension!

★★★★★
Award for Hygiene

Breakfast, Lunch & Dinner Menu available or just call in for coffee or a cocktail.

Open 11.30-22.30 Mon to Fri and 11.00-22.30 Sat and Sun



Lymm Electric & Hardware
EST. 1974

**Electrical Goods
Repairs • Rewires
Alarms • Security Lights**

NICEIC approved electrical contractors

Dyson/Vac repairs & Service

All work guaranteed

01925 755252

12 Bridgewater Street, Lymm, Cheshire

SWEENEY TODD
TRADITIONAL BARBER

No Appointment Needed

OPENING TIMES:

Monday	9-5:30
Tuesday	9-5:30
Wednesday	9-5:30
Thursday	10.30-7:00
Friday	9-5:30
Saturday	9-2:00

Keep your carbon footprint down and use your local barber!

TEL: 01925 751478 www.lymmbarber.co.uk
26 THE CROSS • LYMM • WA13 0HU

Cutting Edge

Shave and hair care available just by hairdressing, for both men and women it's a friendly salon with easy free parking. Sharon provides gentlemen's and boys care through to ladies and girls hairdressing including a full range of salon treatments

Now selling Bed Head Christmas Gift Sets

- Full head hair care, Cut & Finish from £39
- Bridal Hair & Party Hair from £25
- Cut & Finish from £22
- Gentleman's hair cut from £5
- Children's hair cut from £7

Ring to make an appointment 01925 752735
77 Whitesands Road Lymm WA13 9LJ

Happy Christmas
to our new and existing clients

Elm tree
Financial Services Ltd
Independent Financial Advisers

We firmly believe that our clients need to receive the right service, at the right time.

Investments • Pensions • Mortgages
Life (assurance and protection) • General Insurances

We have a wealth of experience and can offer you a professional personal service to give you unbiased and relevant financial advice whatever your needs.

INITIAL MEETING FREE WITH NO OBLIGATION

Call 01925 754455 to speak to one of our Partners
Email: enquiries@elmtreeifs.co.uk
5A Church Road, Lymm, Cheshire, WA13 0GG

Lymm Osteopathic Practice
— Established 1979 —

SUZETTE PULMAN, N.D. M.R.N. D.O.
Registered Naturopath & Osteopath

DARREN HAYWARD, B.Sc. (Ost)
Registered Osteopath

We are both registered with The General Osteopathic Council (G.O.Sc.)

Open Monday to Saturday
Tel: 01925 752264
The Rise, 16 Grammar School Road, Lymm WA13 0BQ
(Easy Access Road Parking)
Registered with all major insurance companies

CLASSIFIED

Call 0800 955 5247 to advertise

ACCOUNTANCY & BOOKKEEPING

APLEGATE & CO licensed and regulated by the AAT to engage in public practice in Accountancy, Book-keeping, Payroll, VAT, Self Assessment. Tel: 01928 739996/07803 218343. 2 & 8 Collinson Court, Frodsham WA6 7PN.

AIR CONDITIONING

CLIMATE CONTROL BY WARRINGTON based 4 Seasons, for offices, shops, surgeries, schools, homes and conservatories like yours! Installed in a day guaranteed 5 years. Keeping you cool when it's hot and warm when it's not. www.4sac.co.uk 01925 868960

BATHROOMS

The bathroom Refurbishment Co. We can create the Bathroom of your dreams One Warrington Based Company One Job from start to finish Unique 3D virtual CAD design system Please visit our website www.bathroomrefurbishment.co.uk Please Ring Wayne 01925 826 828 or 07976 574 828

LYMM KITCHEN & BATHROOM PROFESSIONAL INSTALLATION. Ceramic wall & floor tiling. For free estimates and advice contact Rob Evans on 01925 752623 business or 07763 770408 mobile. Est 2002. Local references provided

BUILDING SERVICES

BIG DIG Groundworks. Paving, Block Paving, Garden walls, Fencing, Patios, Drives, Foundations. For free estimates call Mob: 01925 755441 or Tel: 01925 752623

BRICKLAYER AVAILABLE for garden walls, pointing etc. Tel: 01925 755441 Mobile: 07966 491624

To advertise Call FREE 0800 955 5247

CARPETS, CURTAINS & INTERIORS

BRIDGEWATER FLOORING AND BLINDS we supply and fit carpets, vinyls, laminates, karndeane, commercial flooring and tiles. Blinds-venetian, vertical, roller and roman. Outdoor awnings, curtains, upholstery, tracks, fabrics, poles and finishing touches showroom open at agden brow. Free measure quotation service. Tel: 01925 755805. Closed Wednesdays. CUSTOM-MADE curtains and loose covers. All accessories supplied and fitted. Made-to-measure blinds. Our fabric or yours. Tel: Orchard Soft Furnishings 01925 756388.

Paul Bains Flooring Solutions Ltd Carpets, Wood, Vinyl, Laminates Domestic & Commercial Supplied & Fitted Family business covering all aspects of flooring including domestic & contract locations Uplifting of old flooring can be arranged Moving of furniture by arrangement Limited disruption from start to finish Check website for previous installations www.paulbainsflooringsolutionsltd.co.uk Office: 01925 758835 Mobile: 07973 376224

CARPET CLEANING

A1 STAINBUSTERS: Fully guaranteed carpet and upholstery deep dry cleaning. Clean & dry in only ONE hour. Quotes for both commercial and domestic. Contact the Local expert John Latham on 01925 205210 or 07765 314080

SAFECLEAN: SAFE ORGANIC CLEANING. Specialists in cleaning all leather and fabric upholstery, rugs, carpets and curtains in situ. Ask about our new organic allergy relief system, Guardsman stain protection plans and carpet repairs. Richard Vaal on 0808 144 8178

SIMPLY THE BEST CARPET CLEAN YOU WILL EVER have. Cleaners UK Ltd. Est 22 yrs. Have your carpets & sofas beautifully deep cleaned leaving them fresh smelling & colour restored. Latest & best methods. Dry/steam. Professional, reliable & affordable. Call Neil Riley on 01925 264989/07831 336060 www.cleaners-uk.net

CENTRAL HEATING

CORGI REGISTERED GAS ENGINEER. Andy Gas of Lymm, specialist in: Boiler upgrades, servicing, repairs to all domestic heating and gas appliances. Professional service. Tel Andy on: 07753 838129 or 01925 753712.

CHILDREN'S ACTIVITIES

TUMBLE TOTS is the leading national physical play programme for children, classes available in Knutsford Hale & Bowden. We can be booked for private parties. Contact Jane on 07812-144450. www.tumble tots.com/sale

CLEANING SERVICES

arleys angels • Spring Clean Services • Presenting your home for sale • Moving house • After building work cleans 01925 266834 because you're worth it!

THE CLEANING FAIRIES. We'll work our magic to make your home sparkle clean. No home too big or too small. Call Claire 07872040898 or Hayley 07515009645.

SIMPLY THE BEST CARPET CLEAN YOU WILL EVER have. Cleaners UK Ltd. Est 22 yrs. Have your carpets & sofas beautifully deep cleaned leaving them fresh smelling & colour restored. Latest & best methods. Dry/steam. Professional, reliable & affordable. Call Neil Riley on 01925 264989/07831 336060 www.cleaners-uk.net

COMPUTERS

Having Trouble With Your Computer? Running too slow? Want to upgrade... go wireless? Call for experienced engineer Tel: 07974 448 165 or 01925 751 546

COUNSELLING

Birchbrook Counselling Service Discreet and confidential counselling service Reiki healing and attunements Emotional and Physical journey work Call 07951 266476

DELIVERY SERVICES

FURNITURE FERRY LIGHT REMOVALS. Collections arranged from Ikea, Costco and other stores, garden centres, auctions etc. You choose, you buy, I deliver - SIMPLE. Reliable, inexpensive service. Tel: Matt 07970 178 333 or 01942 732768. www.furnitureferry.co.uk

TnM Couriers - specialists in urgent UK same day deliveries, international and UK next day services available, contract work undertaken, parcels to pallets, no job too small or too big, competitive rates. Call 01925 639029.

DRIVEWAY & PATIO

PAVED AREAS NEED POWER WASHING? We can transform your block paving, flags or tarmac. Super power washers also to hire. Millington Power Cleaning 01565 830547 or 07983 837994

ELECTRICAL CONTRACTORS

A1 ELECTRICAL SERVICES PAUL LEWIS. For extra sockets/lights, main board upgrades to full rewires, no job too large or small. No call out fee. All work guaranteed. Tel 01925 758337 or 07966 386806. Est 23 years.

EVERGREEN ELECTRICAL CONTRACTING. NICEIC approved contractor. For lights and sockets to rewires, fuse-box upgrades. Qualified electrician. All work is to the latest IEE wiring regulations. No job too small. Most major credit and debit cards accepted. Tel: David on 01925 724219 / 07971 407022.

TRUST PROPERTY ELECTRICAL SERVICES. NICEIC Part P Approved Contractor. All Electrical work undertaken. Inspection & Testing & PAT Testing. All work certified & guaranteed. Call Tim on 07554409906 or 01925 601055

EQUESTRIAN

LYMM RIDING SCHOOL. Learn to ride with friendly atmosphere, group lessons or private. Horses/ponies well schooled. Lessons from £10, we offer tests with pony club cert, please ring for more details. Training for pony club. Rebecca Bennett Regal. 01925 750435. Mob 07778 866006.

EQUESTRIAN SUPPLIES & ANIMAL FEEDS

STABLES SADDLERY. EST. 1964. Good stock of all equestrian supplies and animal feeds. Lots of interesting and unusual equine and canine collectables. Tel: Barbara Williams on Lymm 752762.

FIRES & FIRE SURROUNDS

Quality Fireplaces at Affordable Prices WARRINGTON FIRE SURROUNDS Fires, Fireplaces, Marble Best Prices Quality Value Service Guaranteed 01925 417731 www.warrington-fires.co.uk 8 Lovely Lane, Warrington (follow signs for hospital)

GARDENING SERVICES

A F GARDEN SERVICES REGULAR MAINTENANCE TURFING, SOFT LANDSCAPING CLEARANCES, POWER WASHING HEDGE PRUNING 07796 818 686 0161 928 1722 www.afgardenservices.co.uk

LYMM BASED Beechwood Industries Ltd Does your garden need a complete makeover or just good management? Free Assessment Free Consultation Landscapes Design Construction Paving Lawn Care Tree Surgery Garden Maintenance Contact Adam Hallford on 07749 253 308

FOUR SEASONS GARDEN SHOP EXCELLENT selection of perennials, shrubs, bedding, hanging baskets and much more! Excellent quality and even better prices! Free parking! Near northwich CW8 2EB. Call 07792313460

J C SLAVIN Landscapes & Garden Maintenance Pruning • Garden Clearance • Fencing Flagging • Driveways • Landscaping Designs 01925 756 839 Mob: 07599 747 373

J D S LANDSCAPE & GENERAL BUILDING SERVICES Garden Design • Driveways Patios • Garden Walls • Fencing Decking • Resin Bond Driveways See website for examples Tel: 01925 704883 Mob: 07515 967735 www.jdsorbake.com

Would you like the UK's best value domestic gas & electricity? With our unique "Triple Value" guarantee we will: 1) Guarantee our prices will always be cheaper than British Gas. 2) Guarantee our prices will always be cheaper than your regional electricity supplier. 3) Guarantee our prices will always remain competitive with the cheapest tariffs available from the "Big 6" suppliers. • Easy to switch • No minimum contract • You keep the same pipes and meters • You receive exactly the same gas and electricity THE UTILITY WAREHOUSE 0800 955 5247 New Media Centre, Old Road, Warrington. WA4 1AT

CLASSIFIED

Call 0800 955 5247 to advertise

GARDENING SERVICES

LAWN DRAINAGE AND SOIL AERATION. No trenches, no drainpipes, no digging, no repairs, no hassle. If this interests you **Contact Bob Harper 01925 266852 or 07952 608701.** (13/11)

M J NEEDHAM LANDSCAPES Award winning with over 15 years experience. All aspects of landscaping, specialist in bespoke construction. Qualified design service available. **Contact 01925 825 645 or 07888 730 383** (13/11)

SIMPLY GARDENS CONSULTANCY offers maintenance and design advice; maintenance schedules; planting plans; expert plant selection; on-site training. Regular or occasional maintenance can be arranged. **Call Graham on 01925 766873 or email gard.cott@btinternet.com** (13/11)

GATES

Village Gates
SPECIAL AUTUMN OFFERS NOW ON
Manufacturers and installers of quality timber gates
villagegates.co.uk
01925 766629 or
0121 702 5522 (12/10)

HANDYMAN

Handyman Services
Home, Office & Garden
Gutter Cleaning, Repairs & Replacement
Welding Repairs & Fabrication
Fascias, Soffits & Windows
Patio & Driveway Cleaning
All Garden Work, Flagging, Fencing & Turfing
Interior & Exterior Painting
Plumbing & General DIY
You Name It - No Job Too Small!
Tel Neil: 01925 757905
Mob: 07813 201850
handymanserviceslymm@hotmail.co.uk (11/10)

HAIR & BEAUTY

PROFESSIONAL MOBILE hairstylist, creative cutting, colour/colour correction, including foiled highlights. **Tel: Lorraine 01925 755441 / Mob 0786 7910805.** (13/11)

HEALTH & BEAUTY

Body Treats
in the comfort of your own home
Emma Baker
Mobile Holistic & Beauty Therapist
Call: 07891 809 805 (13/11)

HEALTH CARE

THE WHITE ROOMS PHYSIOTHERAPY and Wellness Centre. Rapid expert assessment and treatment of all musculoskeletal injuries. Spinal Specialists! Discover and tackle the cause of your pain! 11, Henry Street, Lymm, Cheshire WA13-0LT. **Tel: 01925 752333 Mob: 07903 822700.** (12/11)

HYPNOTHERAPY

MICHAEL MAHONEY clinical hypnotherapist for IBS, Stress, Anxiety and many other problems. Medical Research proffected experience, BUPA Service Provider. For FREE information sheet please email TimelineServices@aol.com or ring 01925-658322 www.healthyaudio.com (13/11)

IRONING SERVICES

Carol's Ironing services
NEXT DAY PICKUP & DELIVERY SERVICE
Lymm
Tel: 01925 767945
Mob: 07979 948197 (11/11)

JEWELLERY

evans & co
Jewellery Workshop
39 London Rd, Stockton Heath, Warrington, WA4 6SG
Quality repair, remounting, design work and setting finished to a high standard.
Loose certificated diamonds and gemstones supplied.
Stockists of fine contemporary British Swiss and German jewellery.
Tel: 01925 269292 (11/11)

JOINERY

LYMM & DISTRICT JOINERY & CONSTRUCTION Loft & Cellar conversions. Extensions and renovations. All aspects of joinery undertaken. Free estimates no obligation. **T: 07867 973566. M: 01925 267611 W: www.joinerywarrington.co.uk** (12/10)

KITCHENS

LYMM KITCHEN & BATHROOM PROFESSIONAL INSTALLATION. Ceramic wall & floor tiling. For free estimates and advice contact **Rob Evans on 01925 752623 business or 07763 770408 mobile.** Est 2002. Local references provided (13/11)

LOCKSMITH

CHESHIRE LOCKSMITHS LTD UPVC Door Specialist. Non Destructive Entry Service. Free Quotations. Lymm Based Business. **Contact Tony 07774 805 588.** (14/11)

OPTICIANS

ADCOTT OPTICIANS. State of the Art opticians in the heart of Lymm Village. Comprehensive sight tests and a wide choice of spectacles tailored to you, whatever your budget. **01925 757075** (11/11)

PAINTING & DECORATING

N & K DECORATING SERVICES, High Class Professional Decorators, Paper Hanging Specialist, Internal and External works undertaken, Lymm Based Company, Free Quotations. Call **01925 759936 or 07783 068377.** (14/11)

PAYROLL

WHY TRY TO BE A PAYE EXPERT? Watkinson Black can provide a cost effective payroll service, releasing you to concentrate on your business. For further details please phone: **01925 413210** or e-mail: info@warringtonaccountants.co.uk (13/11)

PHOTOGRAPHER

BRENDA GREEN ABIPP. Qualified professional photographer for People, Environmental Portraits, Weddings, PR, Special Occasions. Established 30 years. websites: www.brenda.green.co.uk www.brendagreen@demon.co.uk **Tel: 01925 753580.** (15/11)

PICTURE FRAMING

EDGAR ART & FRAMING, 19b The Cross Lymm. Picture framing, original art, jewellery, gifts and greetings cards. (Turn right at The Terrace Brasserie & Cafe and right again at the far end). **Tel 01925 754700.** (11/10)

PICTURE FRAMING SERVICE, also original paintings, prints, and giftware. Giclee Printing Service for artists. **The Brentwood Gallery, 106 - 108 London Road, Stockton Heath, Warrington WA4 5LE. Tel: 01925 601473 www.brentwoodgallery.co.uk** (11/11)

PLASTERING

B.E.A. PLASTERING OF LYMM
Full rooms plastered • Skimming
Bonding • Stud walls built
All repair work large or small
Tyroleaning/Rendering
Call David anytime on
01925 753966 or 07786 245068
www.beaplastering.co.uk
Member of the Guild of Master Craftsmen (13/11)

PLASTERING

LYMM PLASTERING
First Class Workmanship
Quality Time served Plasterers
All aspects of Plastering
K Rend coloured Render
Refurbs • New Builds
Re-skims • Tyrolean
Drylining
All Insurance Work
Fully Insured
Tel: Brian Gaffney
Office: 01925 755958
Mobile: 07967 087034 (11/11)

PLUMBING

CL PLUMBING AND GAS SERVICES
Local honest plumber covering all aspects of plumbing and gas works. Boilers and central heating installed and repaired. Bathroom suites supplied and fitted. Cookers and fires fitted. Landlord gas safety checks. All plumbing emergencies - 24 hour call out. No job too small, OAP Discount rates. **Tel Craig 01925 819692 07851 405466 www.clplumbing.co.uk** (11/11)
PB PLUMBING. All domestic and commercial work. Fitted bathrooms and tiling. Small jobs welcome. Free quotes. Fully insured. C&G qualified. Gas Safe Registered **Call 0161 928 3253 or 07821 554867 or Freephone 0800 824 7747 or visit www.pbplumbing.co.uk** (11/11)

STEPHEN ROBERTS
Plumbing and heating, installations and servicing, boiler breakdowns, system upgrades
free estimates
CORGI REGISTERED
Tel: 07830 331231 (14/11)

Plumbflow Ltd
Plumbing and Heating Services
All plumbing & gas installation/repairs
boiler replacement/servicing
bathrooms
Call today for a FREE QUOTATION
01925 468003
www.plumbflow.com (13/11)

PIANO TUITION

VISITING 1-2-1 PIANO/KEYBOARD TUITION. Experienced open minded tutor. 100% exam pass rate (60%+ merit/distinction). Flexible informal approach. First 5 lessons half price till January 2011. **Call Tony Hopkins (Dip ABRSM) 0161 973 0312 or mobile 07591 696388.** (12/11)

RE-UPHOLSTERY

TRADITIONAL and modern re-upholstery. Dining chairs, headboards, 3-piece suites etc. Customer's own fabric welcome. **Tel: Orchard Soft Furnishings 756388.** (12/11)

ROOFING

J & S ROOFING. Roofing repairs & complete replacement. Built up flat roofing, Slating, Tiling, Fascias, soffits and gutting Free quotes, references available. **Tel: 0781 488 0246 & 0788 639 0444.** (13/11)

SITUATIONS VACANT

CAFE SOLAR, LYMM require a morning cleaner. **Contact Nathan on 01925 754444.** We also require experienced waiting on floor staff. **Contact Kat on 01925 754444** (11/10)

TAXI / PRIVATE HIRE SERVICE

Frazer's of Lymm
Private Hire Service • Good local rates
Reliable friendly service • up to five seater
Airport • Station Schools • Business or pleasure for OAPs
Contact Nigel on 01925 754426 or Mob 07812 674822 (12/11)

TAXI / PRIVATE HIRE SERVICE

HORN'S
Airport Transfer Specialists
Stations, Airports, Nights Out
4 & 7 seaters
Prompt and reliable service
LYMM 751761 or 07881 786250 (11/10)

NEED A TAXI?
Any Distance Short or Long
Nights Out, Airports, Stations
Any Occasion, Low Fares
www.Lymmtransfers.co.uk
Tel Chris 0796 007 0304 (11/10)

Silverfox Private Hire
Black, discreet 5-seat Chrysler Voyager
for all occasions: Airport Transfers, Corporate Travel, Contract Work.
Any destination. Professional, reliable service **Tel: 07964 194150** (11/10)

TREE SURGERY

R & R Tree Services
Tree Surgery • Pruning
Hedges • Turfing • Fencing
Flagging
All jobs no matter how big or small
Richard Jennings
M: 07802 512263
T: 01925 750418
www.randtreasureservices.co.uk (13/11)

TUTOR

CHESHIRE TUTORIALS offers tuition. Primary to 'A' level. Tutors especially primary maths, science and English welcome. **Tel: 01925 758296.** (11/11)
FRENCH OR SPANISH TUITION for conversation, exam preparation or business. Learn a new language, improve your language skills or prepare for your GCSE or 'A' Level exams. **Contact: Suzanne on 01925 759597 or 07790 965250.** (11/11)

TV - SATELLITE

AERIALS 2000 of Lymm. No job too small. All work guaranteed. Aerials and satellites supplied and fitted. Sky subscriptions available. OAP reductions. Sky Digital / On Digital. 7 days a week. **Tel: 01925 753427. Mobile: 07712 632315.** (12/11)

WINDOWS & GLAZING

NEIL COPELAND WINDOWS & Conservatories Ltd. Specialist in uPVC double glazing windows, doors, porches, conservatories, also fascias and guttering. FENSA registered. All work guaranteed. **Tel: 01925 756138 / 07961 361550.** (12/11)

SP GLAZING for all your glazing requirements, double glazed units including failed and misted units, broken windows, mirror fixing. Kite marked to B/S. Time served glazier with over 30 years experience. For a friendly no obligation quote tel **Sam Pendlebury on 01942 671859. Mob 07919 660296.** (14/11)

MOTORING SERVICES

CAR SALES

PARKVIEW CAR SALES
We buy and sell
QUALITY CARS
Best price paid
Telephone Peter on
01925 575737 / 07957 545479
23 Padgate Lane
Padgate, Warrington
Cheshire, WA1 3RS (11/11)

Banner & Co

Independent Residential Sales and Letting Agent



PROPERTIES ARE MOVING!

Let us show you how we sell / rent our properties.

- As a privately owned company we have the ultimate incentive to sell/rent your property for as much as possible in the best possible timescale
- Open 7 days a week, accompanied viewings including late nights
- Advertising both locally, nationally and via the web
- Free rental guarantee

JOIN IN OUR SUCCESS

If you are considering moving now or in the future, or would simply like some advice regarding your property please contact Linda or Andy



01925 753636
www.bannerandco.com

Please note that if you have already instructed another agent, we would advise you to check any agreement you may have to ensure you are not liable for more than one commission by instructing us as your agent

