

Lymm

Life

FREE EVERY MONTH

April 2011

Issue: 145


Lymm.com

Take a look!

New faces at the helm

Page 3



Banner & Co

Independent Residential Sales
and Letting Agents

See our main advert
on the back page
for details

01925 753636

SPECIAL OFFER

Free Initial Consultation
and Tooth Whitening with



www.gavinismydentist.com

Great Location | Dental Solutions

T:01925 75 65 65

Slimming World



TUESDAY
Lymm Youth &
Community Centre
9.30am and 7pm
Tel: Christine
07851 946117
0044 897 8000

**SAVE
£5**

Half price
membership
until 31 April 2011


**need family
law advice?**

call your local
legal experts

free legal clinic
mondays 5pm-7pm



01925 604713
www.forlaw.co.uk



Approved by Lymm Parish
Council as the official
magazine for Lymm

**WIN A WEDDING
PACKAGE WORTH
£3,000**

See Centre Pages

Regular news updates at www.lymm.life.co.uk

Editor's Comment



Editor

Gary Skentelbery

Production

Paul Walker

Business Manager

Tony Record

Advertising

Freephone
0800 955 5247

Editorial

01925 623630

Email

info@lymmmlife.co.uk

Websites

www.culchethlife.com
www.frodshamlife.co.uk
www.lymmmlife.co.uk
www.warrington.tv
www.warrington-worldwide.co.uk

Address

New Media Centre
Old Road Warrington
WA4 1AT

Lymm Life is published monthly by Orbit News Ltd.

The contents of this magazine are fully protected by copyright and nothing may be reprinted or reproduced without prior permission of the publishers.

The publishers are not liable for any statement made or opinion expressed by third parties in this publication.

Printed by TwentyFourSeven

IT was fantastic to see so many people at the last meeting of Lymm Traders Association.

At the end of the meeting Phil Sexton announced he was standing down and I would like to publicly thank him for all the hard work he put in, especially with the 'Love Lymm' campaign which proved to be an effective way of promoting the village and all it has to offer.

It can sometimes seem a thankless task rallying the troops and I know Phil put a lot of time and energy into helping promote everything which is good about our community.

I would like to also pass on my best

wishes to Charlotte and Danny (see page 3) who have now taken over at the helm and early indications suggest they have a real passion and enthusiasm to ensure Lymm retains its unique appeal, while at the same time banging the drum to promote Lymm as the place to shop.

It is vitally important during these tough economic times that we all pull together as a community and work together to promote everything which is good about our village.

I know for a fact that there are many traders in the village who offer services equally as good, if not better than the national high street brands - so when you can, please support

your local community.

This month is the 12th anniversary of Lymm Life magazine during which time we haven't missed a single month of promoting community news and helping local businesses showcase what they have to offer.

The magazine has grown and developed and we now print over 6,000 copies, with 5,000 delivered door to door to homes in the area.

I would like to take this opportunity to thank all those who have supported us over the years and urge everyone to support the local community - because with out the support of those who support us - there would be no Lymm Life!

Have you got a story? Send your news items and pictures to info@lymmmlife.co.uk or phone 01925 623630

R + N STANHOPE

Coal and Log Supplies

Best Quality Coal
Smokeless Fuel
Logs Supplied in Bags and Bulk
Peat Bricks
Open 7 Days

Broomeage Farm
Burford Lane, Lymm WA13 0SE

Tel/Fax: **752830**

We would like to welcome

Cheshire Natural Health
Christine Whiteley, Physiotherapist & Rosemary Dossett, Counsellor

formerly at the Cross Clinic are now at Cheshire Natural Health

Please call to find out more
Tel: **01925 730123**

www.cheshirenaturalhealth.co.uk
Cheshire Natural Health, Beehive House, Tarporley Road, Stretton, Warrington

Smart FURNISHINGS

GREAT PRICES THROUGHOUT THE STORE THIS SPRING

LIVING • DINING • SLEEPING • FLOORING • OCCASIONAL

NEW range of beds now on display

NEW range of modern bedroom furniture arriving soon

FREE Local Delivery • FREE parking • Established family business

MASSIVE DISCOUNTS on EX-DISPLAY SUITES

PRICES SLASHED - to make way for new stock HURRY DON'T MISS OUT!

NEW beautiful solid oak dining furniture now on display

Free underlay & fitting on stock carpets

OPEN: Mon-Fri 9am - 5.30pm, Saturday 9am - 5pm
Smart Furnishings, Chapel Ln, Stockton Heath, Warrington WA4 6LL

www.smartfurnishings.co.uk T: 01925 267518

Ready... steady...grow!

Spring is almost on us. So get ready for the new season with the best of everything you need for the garden...at Fryers.

Fryer's

More than a GARDEN CENTRE

On the A50 one mile north of Knutsford
Telephone 01565 755455 www.fryers.co.uk

Host families wanted

LYMM Twin Town Society have French families still requiring hosts for a proposed exchange visit in June.

Host families are required for the visit from Wednesday, June 1 (afternoon) to Sunday, June 5 (lunchtime).

Families in need of hosts are a mother and father (doctor), with a 13-year-old son and eight-year-old daughter, a single mum with two boys aged 8 and 10, a couple aged 62 and 60 and a couple aged 65 (retired primary teacher) and 60.

Lymm has been twinned with Meung -Sur-Loire for over 40 years. Meung is a delightful small town about 10 miles west of Orléans in the Loire valley, an hour south of Paris.

For more details contact Kirsty James Membership Co-ordinator, Lymm Twin Town Society on 01925 758361 / 07789 852892

New faces at the helm

LYMM Traders Association now has two new faces at the helm following the decision by Phil Sexton from Sexton's Village Bakery to step down as Chairman.

Charlotte Sumbland, who runs Cheshire Set on Eagle Brow has been appointed Chair person, while Danny Connolly, who is a partner at Puure on Eagle Brow, has been appointed vice chair.

It is now planned to have bi-monthly meetings on the first Monday of the month, the next one scheduled to take place on April 4.

Meanwhile at the last meeting it was unanimously agreed that the Traders Association would fully support the annual Lymm Dickensian Festival following a plea from co-ordinator Mike Evans.

It was also agreed that something needed to be done to improve the existing market which takes place on the car park behind Lymm Youth Club on Thursdays.

Many felt the market had declined over the years and needed to be revamped moving forward.

The traders also heard from Steve Walsh, vice chairman of Low Carbon Lymm who is campaigning for shop keepers to promote re-usable bags as part of a campaign to eradicate plastic bags.



Festival update

WATCH this space for preparations for the 2011 Summer Lymm Festival (23rd June - 3rd July), which will include a full and varied programme.

In the meantime there are still a couple of events left in the Winter Warmer season; the third Comedy Night is on Friday March 25 at the Spread Eagle pub on Eagle Brow; tickets are priced at £10 and are on sale from the bar or online. Comedians Dave Williams, Alan, Ryan, Chris Turner and compere Phil Champman are on the bill.

The final Winter Warmer event is the fabulous Blues Night on Friday April 8 at Lymm Golf Club with headline band Forty4 supported by Johnny Hewitt and Tommy Allen. Tickets are £10 and available from Arches on Eagle Brow or online at www.lymmfestival.org.uk.

Sophies Soft Furnishings

- Curtains • Roman Blinds
- Cushions • Tiebacks • Poles
- Tracks • Valances • Pelmetts

We design, make and fit to meet your exact requirements.

For free home visit or advice ring **Anne on 01925 754446**

www.sophiessoftfurnishings.co.uk

Whites Sports Warrington Market

1901 - 2001 - 100 YEARS OF EXCELLENCE

Specialists in:
Darts, Bowls, Snooker, Air Guns, Walking Sticks, Warrington Town Merchandise, Rugby, Cricket, Football

GIFT VOUCHERS AVAILABLE

Telephone/Fax:
01925 631531

The UK's No.1 Lawn Care Company

- Scarification
- Aeration
- Lawn Fertilising
- Weed Control
- Moss Control
- Water Conserver
- Pest and Disease Management

from as little as **£15**

Call in the professionals!

GreenThumb's annual treatments ensure your lawn looks lush, green and healthy. With prices starting from £15 per treatment, your lawn nightmare will soon be history.

Call your local branch today for a FREE lawn analysis and no obligation quote on:

01925 210669

Find us online at: www.greenthumb.co.uk

Rosebank Naturegarten, Pepper St, Lymm

a dream come true for you and your child.

- Home from home
- Extensive grounds
- Outside learning days
- Early Years/flexible sessions
- Full Day Care
- Children from 2½ years

Did you always want to build dens, explore, do woodwork and gardening?
...make sure your child has a head start and a childhood to sing about with a setting that gives them real space to develop, learn and play.

Our new Scandinavian Log Cabin is the natural choice for your child with its custom design and outside areas. Most of all we really do cater for children's individual needs with all play being led or directed by qualified teachers.

'The diverse curriculum offers opportunities for children to develop their skills and find their strengths' (OFSTED)

Up to 15 hours per week may be FREE using Early Education Grants for 3 and 4 year olds.

We can also take babies and toddlers at The Rosebank Centre, our other Pepper Street nursery, which focuses on their specific needs.

Phone Sadie Hopley on 758959 to come and explore

MOOD
design solutions

One-2-One Social Media Training

Raise the profile of your business and generate new leads

Introductory course £90
Covering Facebook | LinkedIn | Twitter

Tel: 01925 752500
info@mood-design.co.uk

Sophie's KITCHEN

Breakfast, Lunch, Afternoon Tea, Coffee & Cake, Celebration Cakes made to order, Gifts & Crafts

Pensioners Lunch Specials £4.95 Monday - Thursday

Open 7 days • Free Parking/WiFi
www.sophieskitchen.co.uk
Tel: 07957 325710
Lymm Nurseries, 80 Rushgreen Road

Dyslexia Unlocked

Spell words the way they sound?
Confuse words with similar ones?
Problems using punctuation?

Do any of these describe your feelings, or those of a friend or family member? These are typical characteristics of dyslexia and can be successfully managed allowing real potential to be unlocked.

Contact **Glynis Allen (AMBDA)**
01925 756141
glynis.allen@btopenworld.com

Cards by Samantha

Daytime & evening card making classes - for all levels
Saturday workshops
TRY CARD MAKING FOR FREE - taster sessions coming in March
Wedding Stationery - made to order - 10% discount following consultation

Tel: 01925 602848
www.cardsbysamantha.co.uk

P.E.T.S. ANIMAL SPA
Pet Grooming Specialists
20 years experience

Grooming from £10
Treatments from £5
we use products with natural ingredients
Blueberry Facial for tear skins
Avocado Paw Treatment for Cracked Pads

07792 756 545 or 01925 750418
www.petanimalspa.co.uk

What's On

April 11
LYMM HISTORY SOCIETY
Village Hall, Pepper Street, 8pm
Major Colin Robins
"Florence Nightingale: Angel of mercy"
Major Robins is donating his fee to the "Help the Heroes" appeal.

April 12
LYMM PARISH COUNCIL
Lymm Parish Hall, 7.30pm

LYMM LIONS GROUP
Meet: Bridgewater Club, Lymm
1st and 3rd Tuesdays of the month. 8pm
Contact: 0845 833 5729

LYMM THURSDAY EVENING BRIDGE CLUB
Lymm Village Hall every Thursday 7pm

MAPLE LODGE ART GROUP
Meet each Wednesday 9.30am - 12.30pm
Maple Lodge Guide HQ, Pepper St, Lymm
Details: 01925 755126

ROTARY CLUB OF LYMM
Meet every Wednesday at Statham Lodge Hotel 7.15pm for 7.30pm
Contact the secretary 01925 650189

LOVING HANDS
Knitting for charity at Lymm Methodist Church, 2nd and 4th Thursday each month. 1.30pm - 3pm. Details: 01925 823614.

MARKET LUNCHES
Eagle Brow Methodist Church
3rd Thursday in the month
Light lunches 12 noon till 2pm. All proceeds to Age UK and YMCA Room at The Inn

LYMM SCOTTISH COUNTRY DANCE CLUB
St Mary's Church Hall
Second and fourth Fridays (Sept - May) 7.30pm
Details: 753853

LYMM BAPTIST CHURCH DROP-LUNCH
Higher Lane, Mondays (during term time). 12 noon to 1.15pm. £2.50

LYMM JUBILEE GARDENING CLUB
Meet Third Wednesday of the month
Lymm Baptist Church, Higher Lane. 7.30pm
Visitors welcome. £2 includes tea and cake

LYMM FLORAL ART GROUP
Lymm Village Hall
Third Monday of the month (except August) at 7.30pm

LYMM ORNITHOLOGY GROUP
Lymm Village Hall, 7.45pm for 8pm,
Last Friday in the month (ex. June & July).
Guest speaker, Slide Show, Refreshments.
Visitors welcome. First visit FREE.
Also field trips. Details: lymmog.co.uk

in conjunction with
Lymm Parish Council

TAEKWON-DO
at Lymm Leisure Centre

New Beginners Classes
Children & Adults
All grades welcome

Call
07525 340284
www.taekwondo123.com
taekwondo-news@hotmail.co.uk

Lymm Parish Council Meeting

Tuesday 12th March
7.30pm

Lymm Parish Hall

TABLE TOP SALE
Every Sunday
Starting 20th March
Open 10am - 2pm Tables £10

CRAFT FAIR
Starting 10th April
then 1st Sunday of every month
Tables £15

Booking Essential
Call **Sophie 07957 325710**
LYMM NURSERIES
Rushgreen Road, Lymm WA13 9PR

To appear on the What's On page please contact Lymm Life on 01925 623530

Cotebrook House

The Cotebrook May Day Music Festival
Monday 2nd May - 2pm-6pm
Bar, Barbeque & Stalls.
Bring a picnic and enjoy our lovely grounds and live music

Open Day - Wednesday 11th May
Food, Music & Quiz. All Welcome.

Many thanks to Lawlors of Lymm, Hairdressers for raising over £300 for Cotebrook by selling homemade jam.

Please contact us if you would like to visit our home
Opposite Lymm High School
Oughtrington Lane, Lymm WA13 0QY Tel: 01925 752583

Kids Planet - Beamont
O'Leary Street
Warrington
Cheshire
WA2 7RQ
01925 630 879
Open 07:30 - 18:00

Kids Planet - Warrington
Ebenezer Chapel
Ebenezer Place
Leigh Street, Warrington
Cheshire WA1 1UL
01925 417 350
Open 07:00 - 19:00

Kids Planet - Lymm
29 Eagle Brow
Lymm
Cheshire
WA13 0NA
01925 759 220
Open 07:00 - 19:00

Kids Planet - Widnes
Kingway Learning Centre
Victoria Road
Widnes
Cheshire WA8 7QY
0151 257 7079
Open 07:30 - 18:00

... A WORLD OF DIFFERENCE

We offer the world as seen through the eyes of a child.
We give the highest standard of day care and education creating a unique home for home for our children.

- Flexible opening times
- Experienced and enthusiastic staff
- Ultra secure environment with CCTV
- Healthy nutritious menu
- Indoor and Outdoor play areas
- Excellent Ofsted Reports

www.kidsplanetdaynurseries.co.uk

Abbey Leys Farm Shop

Fresh Farm Food at its Best!
Organic Free Range Eggs • Goose and Duck Eggs • Pickled Eggs
Home Grown Potatoes • Fresh Fruit and Vegetables
Farmhouse Cheshire Cheese • Butter • Fresh Milk
Farmhouse Ice Cream and Lemon Cheese

Opening Times: 9.00am - 5.30pm Mon - Sat. Sun 10.00am - 4.00pm

ABBEY LEYS FARMERS' MARKET
First Sunday each month 10am - 2pm

Tim & Janet Harrison
753465
Peacock Lane, High Legh

Would you like peace of mind on your gas and electricity prices?

Join the Club!

Our unique 'Triple Value' guarantee:

1. For your gas, we guarantee our prices will always be cheaper than British Gas, whenever you live in the UK.
2. For your electricity, we guarantee our prices will always be cheaper than the prices charged by the regional electricity supplier for the area where you live.
3. And for your complete peace of mind we guarantee our prices will always remain competitive compared with the cheapest standard tariffs available from the "Big 6" suppliers.

For full details, contact:
0800 955 5247

And with no minimum contract, it's risk-free.

- Single bill for all your utilities
- Award-winning customer service
- Value that's unbeatable
- Easy to switch

Save 25% on your energy bills by switching. ASK NOW!

THE UTILITY WAREHOUSE

Welcome to a proper bank



At Handelsbanken relationship banking still lives up to its name. With all key decisions made locally by us at the branch we are able to offer a highly personal banking service that is designed to meet your individual requirements.

We provide all the main services that high street banks provide, from day-to-day transactional banking, to the more sophisticated needs of the modern business. Our Individual Banking service is designed for high net worth customers who need a bespoke

offering with easy access to their manager. Putting the needs of the customer ahead of all else lies at the heart of everything we do. We tailor our current accounts, mortgages and loans to your individual requirements.

Chris Clarke
Karen McComb

Corporate Account Manager - Tel: 01925 575706
Individual Banking Manager - Tel: 01925 575708

1st Floor, 760 Mandarin Court
Centre Park, Warrington, WA1 1GG
www.handelsbanken.co.uk/warrington

Handelsbanken



P.E.T.S. ANIMAL HOTEL
 Setting New Standards in Animal Care
 Luxury Style Boarding

Doggy Day Creche **Puppy Training Classes**
 - Pick up & Delivery Service - Behaviour Management

To arrange a tour please ring
 Fran Jennings on
07792 756 545 or 01925 750418
 27 Burford Lane, Lymm, Cheshire WA13 0SH
www.petsanimalhotel.co.uk




The Complete Kitchen & Bathroom Service

Village Designs

We design and install all types of kitchens and bathrooms. Our comprehensive service includes all trades:

Lighting • Tiling • Flooring • Decorating etc

One local company from start to finish

Visit: www.villagedesigns.co.uk or
 Ring Jeremy on 07810 421243

Dam given clean bill of health

LYMM Dam has been given a clean bill of health after an Environment Agency inspection and clean up at the request of Bay Malton Angling Club.

The EA sent a three man team and a boat with the object of removing all the discarded fishing line, hooks etc from overhanging trees and bushes around the lake.

They spent five hours removing a huge amount of fishing debris which has accumulated over the years.

While they were on the water they also took sonar depth readings and checked on fish stocks around the underwater fish protection cages that they had put in some months earlier.

From all accounts the lake is in a pretty healthy state and with the right management, will continue to be so, well into the future.

Many thanks from Bay Malton Angling Club fisheries development department to the Environment Agency for all their help and advice.



Bramble Lodge Day Nursery
 Birth – 5 years
 Good quality childcare and education in a homely environment.
 Next to Lymm High School
www.bramblelodge.co.uk

01925 757597
 36 Oughtrington Lane • Lymm

BYTEWYSE COMPUTERS LTD
 THE SMARTEST CHOICE FOR SYSTEMS & SUPPORT

- Custom built PCs to meet all requirements
- Full Windows 7 supply and support
- Free home delivery and installation with up to 24 months warranty
- PC repairs and maintenance
- Remote Access Support
- Networking and PC support contracts for small or home businesses
- Call us now on 01925 759658

www.byteWysecomputers.com

58, PADDOCK VIEW, LABREY LANE, THELWALL, WARRINGTON, WA4 2TF



Thelwall Upholstery

FOR THE MOST COMPETITIVE RATES IN THE AREA
 49 Knutsford Road, Grappenhall WA4 2NR
 Call Sean on: 01925 604770 or mobile: 07799 228080

For all your upholstery needs

SPECIALISTS IN:
 • Re-filling Cushions • Re-springing • Full Re-upholster
 • Dining Furniture • Headboards

A wide range of sample books to choose from
 All at competitive rates

PHONE FOR YOUR FREE ESTIMATES



HONDA
 The Power of Dreams

CASHBACK
 IT REALLY PAYS TO BUY A HONDA

With an unrivalled reputation for quality, innovation and reliability, a Honda has always been the lawnmower of choice.

Now with up to £400 cashback, we've made your choice easier than ever. Get a great deal more this spring, only from Honda.

£75 **£400** **£100**



Duttons Mowerworld
 The Smithy, Chester Road, Warrington WA4 4AJ
 01925 740217 www.duttonsmowerworld.co.uk

Terms & Conditions apply. Available only to those with 28 May 2011 21% cashback offer applied to their credit cards. £100 cashback offer applies to £1000 credit cards. £400 cashback offer applies to £4000 credit cards. Subject to availability. Visit www.honda.co.uk for full details.

Spring into action

WITH spring in the air, many households are beginning to prepare for the dreaded spring clean.

Paul Clark from professional oven valeters Ovenu believes this time of year is the perfect time for homeowners to give their ovens a well deserved spring clean.

Even the most enthusiastic spring cleaners, donning rubber gloves and tackling the oven is still one of the most loathed household chores. If people are not thorough with their oven cleaning, fat and food can cause future problems, which could result in an oven fire.

Paul said: "As outside temperatures plummeted during the winter many people turned to their ovens for hot wholesome meals, but more you use your oven the more debris and grease can start to build up and this can affect its efficiency."

The Ovenu valeting process involves dismantling key components of an oven such as the door, interior panels, fan and shelves and placing them into design-registered equipment, which uses non-caustic products to clean the oven parts.

The whole process takes around three hours and leaves the oven, hob and exterior in immaculate condition. Ovenu is accredited by the British Accreditation Bureau to ISO 9001 and all cleaning products used by Ovenu are environmentally friendly, bio-degradable and conform to the latest government REACH regulations. Ovenu's Carbon Remover is also approved by the Vitreous Enamel Association.

Runners celebrate their first year

MEMBERS of Lymm Runners were honoured when the club held its first ever awards ceremony.

The Star Awards were held at the club's inaugural AGM at the Spread Eagle pub.

Winners were: Lee Hughes, for Most Improved Runner, for tackling ultra-marathons only 18 months after taking up running; Kieran Walshe for Best Performance, for participating in many races including a 95-mile ultra-marathon; Ian Pike for Best Injury, for getting a wasp up his nose; Julie Thomson for Club Person of the Year, for showing support as a spectator for members during races while too ill to run herself - even travelling to the North East to cheer on members in the Great North Run.

Club secretary Kathryn Ryan said: "Lymm Runners was only set up a year ago and from such humble beginnings we have already achieved so much."

"Members have participated in

races ranging from 5ks to ultra-marathons and are now a familiar face running around the village on weekly training sessions."

Lymm Runners meet outside Lymm Library at 7pm on Tuesdays and

Thursdays and at 8am on Sundays.

For more information visit: <http://lymmrunners.org.uk>

Lymm Runners Star Awards winners, from left, Ian Pike, Julie Thomson, Kieran Walshe and Lee Hughes.



For ALL your plumbing requirements

ROBERT KETTLE
PLUMBING & HEATING SERVICES

For a fast, local service
No job too small • Competitive rates
Free estimates • Senior citizens discounts

Home: 01925 756685
Mobile: 07789514087

oven oven valeting service **ovenu.co.uk**
...punctuality, pride, courtesy...

- Range & Aga Specialists
- Ovens & Hobs
- Extractor Hoods
- Microwave Ovens
- Traditional Stoves

LET US HELP - PHONE NOW
01925 453377

the UK's favourite oven cleaning specialists

Dental care with Jill Cooper BDS DPDS

...something to smile about

Providing quality, caring, affordable dentistry



Prices from £700 - £2,600
Limited offer maximum price, no matter how severe your case is

Clearstep System - The 'invisible' way to perfect teeth

Clearstep is a unique approach to orthodontics that can help you achieve the smile you always wanted - 'invisible'. The Clearstep System is comprised of a number of different 'invisible' solutions that we use in conjunction with clear positioners, to gently guide your teeth from their present position to your desired result.

Clearstep is suitable for ages 7 and upwards, the aesthetic and removable features of the Clearstep System are ideal for children, adults or teens who are seeking an 'invisible' solution to their orthodontic needs.



Tel: 01925 758616

152 Rushgreen Road, Lymm, Cheshire WA13 9QW
www.dentalcarewithjillcooper.com dental-care@btconnect.com



Former Rose Queen celebrates 100 years

A FORMER Statham Rose Queen has celebrated her 100th birthday in Lymm with family and friends.

Marjorie Dickinson (nee Inglefield) was born in Holly Bank Cottages, near the Bridgewater Canal in Statham, in 1911.

She has only lived in that house and her current home in Lymm, all her life.

Mrs Dickinson, who was Rose Queen in 1925, started her first job at William Wright's gold beating company in Lymm.

Machinist

From 1952 to 1967 she was a machinist at Hospital Supplies Company, Massey Brook, making

uniforms for nurses.

Mrs Dickinson was married for 62 years to Albert and has two sons Graham and Roy. In her younger days she enjoyed cycling, travelling, knitting and sewing.

She was a member of Warrington Cycling Club and she and her husband used to ride a tandem all over Derbyshire.

More than 40 family and friends joined her for her birthday celebrations at the Crown Inn, Lymm. She received a birthday card to mark the special day from The Queen.

Roy said: "She was overwhelmed by the party and really enjoyed herself."



GET YOUR BEST HEALTH

Bioenergetic Health Testing

Can help people with:

- Disruptive menopause/ hormone imbalance
 - Skin conditions
 - Allergies/food intolerances
 - Tiredness and ME
 - Poor immune function
 - Digestive problems and IBS
 - Parasites and Candida
 - Stress or sleep problems
 - Migrains and pain
 - Weightloss
- and much more



CALL NOW FOR A FREE INITIAL CONSULTATION
Anelli Conreen 0800 007 5201 or Mob: 07545 592 764
for more info visit: www.getyourbesthealth.co.uk

WR
white
rooms

Conveniently located in the centre of Lymm Village

**SPORTS INJURY
& ORTHOPAEDIC
CLINIC**

Physiotherapy treatments

from...
£30

Call now to book an appointment...
Telephone: 01925 752333

Our team of highly qualified chartered physiotherapists use state of the art treatments and techniques to assist in the fastest recovery.

COMMON INJURIES TREATED:

- Spinal Injuries + Whiplash
- Low Back & Neck Pain
- Sports Injury Assessment
- Post Op Rehabilitation
- Knee Injuries
- Shoulder Injuries
- Sprains & Strains
- Hamstring & Groin Injuries



SKI SEASON HAS ARRIVED!

White Rooms can offer pre ski assessments and treatment for persistent injuries prior to your trip. White Rooms can also offer full assessment, medical imaging and treatment of injuries that you may pick up whilst away.



Knee Injury Treatment

from...
£30

from...
£350

Full Knee Injury
Assessment + MRI Scan

DIRECT ACCESS TO MEDICAL IMAGING:

MRI Scan from **£299**
Musculo-Skeletal Ultrasound Scan from **£160**
Ultrasound Injection Therapy from **£260**

11 Henry Street, Lymm, Cheshire WA13 0LT

www.whiteroomsltd.co.uk

PHYSIOTHERAPY - SPORTS INJURY - ORTHOTICS - NUTRITION - PERSONAL TRAINING - RADIOLOGY

With an increase in sales, we currently have clients waiting to purchase. Ridgeway Residential is the right choice to sell your property quickly and efficiently.

Urgently Required Properties For Sale. Please call for a Free Market Appraisal Today

FOR SALE

FOR SALE



17 Rushes Meadow, Lymm
A large modern detached property. The property comprises of entrance hall, lounge with double doors leading to the rear garden, dining room, family room, snug, downstairs W/C, large breakfast kitchen, utility, conservatory, 5 beds, 3 baths, Gardens to the front and rear.
£579,950



1 Longcroft Place, Lymm
A well presented modern detached property standing on a corner plot in the Heatley Mere development. Lounge with double doors to garden, dining kitchen, utility, W/C, 5 bedrooms, 3 bathrooms, good sized garden, garage. No Chain. Viewing recommended.
£419,950



30 Quayside Mews, Lymm
Well presented mews property overlooking the Bridgewater canal. The property comprises of an entrance hall, utility, bedroom 4/study, shower room, good sized living/dining room, breakfast kitchen, 3 bedrooms, 2 bathrooms, garage, walking distance of Lymm village. Viewing Recommended.
£299,995



99 Chaise Meadow, Lymm
A delightful semi-detached town house comprising of entrance hall, living room, breakfast kitchen, downstairs W/C, 4 bedrooms, 3 bathrooms (two en-suite), off road parking, gardens, gas central heating. **STAMP DUTY PAID**
£275,000



6a Pepper Street, Lymm
A newly built modern apartment standing in the heart of Lymm village, communal entrance hall, hallway, lounge/diner, fitted kitchen, two bedrooms, 2 bathrooms, the apartments are fitted to a high standard and benefit from double glazing, GCH and off road parking.
£245,000



1 Orchard Road, Lymm
A fully refurbished end terraced situated in sought after location. Comprises of an entrance hall, lounge, dining kitchen, 3 bedrooms, 2 bathrooms, double glazing, landscaped good sized front garden and off road parking. There is a detached garage and enclosed rear yard.
£235,000



2 Woodbine Road, Lymm
Attractive end modern mews in popular location comprising of an entrance hall, large lounge, breakfast kitchen with door leading into garden, two double bedrooms, two bathrooms, gas central heating, enclosed garden, garage and parking. Viewing recommended.
£189,950



10 Hawthorn Road, Lymm
A semi detached property in a cul de sac location and within walking distance of Lymm Village. The property consists of hall, lounge, dining room, downstairs W/C. kitchen, 3 good bedrooms, loft room, large bathroom, outside gardens to front and rear and off road parking.
£165,000

TO LET

24 Chaise Meadow, Lymm
5 Bedroom detached house, furnished/unfurnished. Available Immediately **£1,650pcm**

2 Fieldways, Star Lane, Lymm
2 bedroom apartment, unfurnished. Available 22/03/2011 **£495pcm**

1 Temple House, Lymm
4 bedroom duplex apartment, unfurnished. Available Immediately **£695pcm**

4 Waterbridge Court, Lymm
2 bedroom apartment, unfurnished. Available Immediately **£495pcm**

TO LET

Due to the high demand in Rentals we require To Let properties in all prices.

19 The Cross Lymm Cheshire WA13 0HR T. 01925 756931 E. sales@ridgewayresidential.co.uk

Concert band running out of brass!



MEMBERS of Lymm Concert Band can be forgiven for feeling a little 'brassed off' – because they are suffering a shortage of brass players.

The band, which performs several concerts a year in and around the Lymm area, is looking to recruit new players - particularly trumpet, trombone, French Horn and tuba.

They also have a desperate need for a percussionist.

The band, established more than 20 years ago, plays annually at Lymm Festival, Lymm Dickensian Festival and the Arley Hall Garden Festival. They rehearse every Thursday evening at Lymm United Reformed Church from 8pm-10pm

Ideally, the band's line-up consists Piccollo, Flute, Oboe, Clarinet, Bass Clarinet, Bassoon, Alto/Tenor/Baritone Saxophones, Trumpet,

French Horn, Trombone, Bass Trombone, Tuba and Percussion - tuned and untuned.

It performs a varied repertoire ranging from classic concert band pieces to music from stage and screen.

Players of all ages and standards are encouraged.

The band rehearse on a Thursday evening, 8pm - 10pm at the Lymm United Reformed Church, Brookfield Road, under the baton of their musical director and principal conductor Darren C Wood.

Anyone interested in joining or requiring further information can visit the website www.lymmconcertband.co.uk or contact the musical director on 07884 436270 or email admin@lymmconcertband.co.uk



BROTHERSTON

Fix Problems!

Electrical - Plumbing - Audio Visual - Joinery
Bathroom Problems - Kitchen Problems

Call Steven Brotherston on
07818 636 112

Email: steve@ston.co.uk



B.A.S

Bespoke Architectural Structures Ltd

Transform your living space or work place with specialist glazing made to the highest standard. Family based business manufacturing, supplying and installing glazing systems to the domestic and commercial market specialising in sliding folding doors: Call us now for a **FREE no obligation quotation.**

Best quality and service assured!



www.b-a-s.co.uk
Tel: **01928 579957**
Unit 3, Sycamore Court, Manor Park, Runcorn. WA7 1RS

rated #1

full service digital design agency in warrington*

CARPE DIEM
WEB // DESIGN // VIDEO // + MORE
+44 (0)1925 299 842 www.carpe-diem.co.uk

RAR+
TOP 100
AGENCY 2010

REAL EARTH

TILE SHOWROOM

TRADE PRICES





NATURAL STONE TILES • WOOD FLOORING
BATHROOM SUITES • UNDERFLOOR HEATING
FURNISHINGS • FITTING SERVICE AVAILABLE
PORCELAIN TILES • INDIAN STONE PAVING

Lymm Nursery • Rushgreen Road • Lymm • Cheshire • WA13 9PR
T: 01925 759 607 • E: info@realearthuk.com



same day smiles™

“ It has given me my life and my confidence back...Huge thanks to the **same day smiles™** team! I can't tell you how much this simple procedure has improved my life and how grateful I am that I have been given a new lease of life and an amazing new smile! ”

Claire - Hertfordshire

All-on-4™

The modern solution giving you 4 implants and fixed teeth in just one day

- Quality at an affordable price giving you a cost effective solution
- **same day smiles™** is the leading provider of All-on-4™ in the UK
- Treatment on your doorstep, giving you implants and new teeth in just one day
- The only scientifically proven and documented technique available using All-on-4™ implant dentistry
- **same day smiles™** uses the All-on-4™ technique which has a success rate of 100% for implant bridges
- We only use implants and components from Nobel Biocare the market leader in dental implants
- Nobel Biocare has more than 45 years of scientifically proven success in implant dentistry

With clinics located across the UK and a personal service tailored for each individual, we can help you achieve that lifestyle change you have only dreamed of until now.

to speak to one of our patient co-ordinators and book your FREE consultation call;

☎ **0845 508 1531**

hello@samedaysmiles.co.uk | www.samedaysmiles.co.uk

what a difference a day makes™



**0%
finance
available**

*terms and conditions apply

Brolley good show for new business

BROLLEY is one of the fastest growing and innovative property services companies of its type in the sector and is celebrating the launch of its business model for Cheshire, based in Lymm.

Providing products and services to both private and corporate clients their portfolio encompasses full-service property maintenance outsource contracts for Landlords, including Gas Safety and PAT testing, through to facilities management for corporate clients and block maintenance and domestic cleaning services for Private clients.

They opened their Cheshire office, based in Lymm, at the end of 2010 and have been steadily building up their customer base and been welcomed by many of the local trades and businesses in the area.

Jim Hallas, co-owner of Brolley.co.uk Limited, who lives in Lymm with his family said: "We launched Brolley in October 2009

servicing Kent and have seen rapid growth since then, which has meant new offices in Sussex and now Cheshire.

"We always play an active role in the community that we serve and have already began building some associations with local schools and sports teams in the area. We are also proud sponsor of 'Help for Heroes' and also 'Hospice in the Weald', both fantastic causes that we are aiming to raise as much money for as possible in 2011.

"We now have more than 20 directly employed staff and work with more than 50 subcontract suppliers that deliver our services to the exacting 'Brolley Standards'.

"This means our customers can source every service with complete peace of mind, knowing that we guarantee that the work will be undertaken by a fully qualified and fully insured trades person every time. We have a very simple approach



Left to right Bart Fluks - Graphic / Web Designer / Marketing Jim Hallas - Co-owner of Brolley / Director Tim Warlow - Operations Manager Chris Johnson - Contracts and Estimations Manager Colin Skinner - Accounts Holly Ryan - Customer Accounts Handler Nicola Wilson - Office Assistant

which is all about the quality of the service that we deliver to our customer base.

We underwrite everything that we do so that our customers don't need to worry!

"It is our intention to create a further 50 new positions in 2011, making our small contribution to getting the economy moving again.

"Our company mantra is simple: "Get it right first time, every time".

Craft fairs

A SERIES of regular craft fairs and table top sales is launching at Lymm Nurseries, off Rushgreen Road.

The first craft fair will be on Sunday, April 10 to be followed by more on the first Sunday of each month. Table top sales will start on Sunday, March 20 and will follow every Sunday at 10am, except when the craft fairs are being held.

This follows the success of a special Christmas craft fair held in December.

All the sales will be held indoors adjoining Sophie's Kitchen.

Twin Town grant

LYMM Parish Council has given a grant of £1,200 to Lymm Twin Town Society towards the cost of hosting a party of visitors from twin town Meung-Sur-Loire, in France, later this year, including a full-day excursion to the Lake District.

**No time for cleaning?
We will take care of it!**

We always put our customers first.
Let us take care of your household chores.

Our services include:
Domestic Cleaning, Building Maintenance,
Painting & Decorating

Call us now: 01925 321 317

Exclusive gifts for all occasions,
Weddings, Christenings, Birthdays etc
and of course
Mothers Day and Easter.

Open 7 days a week - 12pm to 4.30pm on Sundays

1 The Grove, Lymm, Cheshire. WA13 0HW
e: info@catyascadeaux.co.uk w: www.catyascadeaux.co.uk
t: 01925 754777

WIN the
Wedding
of your *Dreams*

Lymm Life has teamed up with three prominent local businesses in order to give one lucky couple the perfect start to their new lives together with a wedding package worth nearly

£3,000

in the Lymm Life

Bride
of the
Year

COMPETITION

Andrew Collier Photography: £1000 towards a bespoke wedding photography collection photographed by Andrew Collier and his team, including a personally designed large feature album by Queensberry of New Zealand, reputed to be the world's finest wedding album makers.

Puure Bridal: A wedding dress, valued at £1,000.

Lymm Hotel: 15% off venue (subject to availability on dates preferred), dinner, bed and breakfast for 2 nights prior to the wedding. Balloons for Buffet table. Value £900.

Image Credits:

Wedding gown:
'Gina' by Demetrios @
Puure of Lymm.

Photography:
Andrew Collier
Photography.

Hair:
Anna Warburton.

Make-up:
Danielle Deitch.



To enter simply fill in the missing word from the quote on the entry form on the back page of this feature - along with your details - and send it to Lymm Life

*Andrea
Claire*

all your wardrobe ever needs...

EXQUISITE COLLECTIONS

Offering a modern approach for today's
Mother of the Bride/Groom & Wedding Guests



DAYWEAR EVENINGWEAR SPECIAL OCCASIONS
SHOES HATS GIFTS & ACCESSORIES
sizes 10 - 20

Opening Times: Monday-Friday 10.00am-5.30pm
Saturday 10.00am-5.00pm • Late night by appointment

59-61 Station Road, Cheadle Hulme
Cheshire, SK8 7AA
Tel: 0161 485 3331 • www.andreaclaire.co.uk

Bespoke Wedding Photography by Andrew Collier Photography

Our approach to wedding photography is relaxed and informal, with the emphasis on telling the story of the day as a refreshing alternative to the more traditional formal style of wedding photography.

It's your big day and it should be all about you. Our wedding photography collections are personally designed just for you, and every Andrew Collier Wedding Collection is designed to meet a wide range of budgets without compromising on quality.



Our World Class Queensberry Albums from New Zealand are at the cutting edge of contemporary album making and are sought after by the most discerning bride and groom. Absolute quality and workmanship; the story of your day reflected in a beautiful hand made album that will become a family heirloom.

Our hard backed coffee table story books by Booked Images and Queensberry are a break from the traditional wedding album and are great for reflecting the documentary style photography of your wedding day.

If you'd like to know more about what we do and how we could do your wedding photography then why not call us on 01925 471091.

*cherish the memory
relive the moment...*



The Andrew Collier Gallery,
25a Common Lane, Culcheth.
Tel: 01925 471091

PHOTOGRAPHY
andrewcollier
CONTEMPORARY WEDDING PHOTOGRAPHY
www.andrewcollierphotography.co.uk

Puure growing in success and reputation

GROWING in success and reputation "Puure" based on Eagle Brow is causing quite a stir in Bridal and Lingerie circles but what some people still don't realise is what else the shop has to offer.

"The men's formal hire side is something people are still not aware of," says owner Angie Connelly.

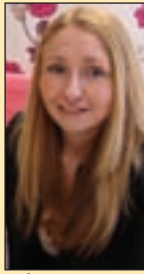
"Guys can hire everything from a normal Lounge suit to Dinner/ Wedding suits, we have a special room dedicated to just men upstairs where they can try on the suits in peace!"

Also the latest edition to the shop is the mother of the bride collection from "Love by Enzoani", and it is already causing a lot of interest from a wide area.

"I am getting ladies coming from as far as 40 miles away because I am the only stockist in the area," added Angie.

"I wanted a less formal, younger, less expensive mother of the bride range which still wowed and I certainly got it with the "Love" collection."

For all enquires whether they be wedding or lingerie or men's lounge/ wedding suits to mother of the bride, please ring 01925 556673 and speak to Angie and her friendly team



Xross interiors
 16 the cross lymm cheshire wa13 0lu
 01925 758298
 xrossinteriors@live.co.uk
Unique Wedding Gifts Available
 Come and see our Home and Gifts department
 curtains • blinds • carpets
 vinyls • poles & tracks • giftware
design and consultation for your new home

Gift Vouchers Available

'Love' by Enzoani
Mother of the Bride

Ultimate
Formal Suit Hire

Suit Hire Prom Package £53.00
 includes black tuxedo, shirt and tie

puure

www.puure.com
 10 Eagle Brow, Lymm, Cheshire WA13 0LN
 Tel: 01925 556673

*Planning
Your Special Day*

Your special day should be perfect. That's why our expert wedding co-ordinator will be on hand throughout to discuss your plans and ensure everything runs smoothly on the day. She can help with all aspects, from menu and wine selections to table plans and entertainment, leaving you to simply enjoy yourself!

**Fantastic Seasonal
All Inclusive Packages
Available**

**Wedding Open Day
Sunday 10th April**

Tel: 01925 752233
 Whitbarrow Road, Lymm WA13 9AQ
 www.macdonald-hotels.co.uk/lymm
 general.lymm@macdonald-hotels.co.uk

**THE LYMM
HOTEL**

The Lymm Life
Bride of the Year
COMPETITION

**Something old,
Something new,
Something borrowed,
Something**

Write the missing word
in the white box above, then cut out
the coupon and send it to
Lymm Life Bride of the Year
Competition
Lymm Life
c/o Orbit News Ltd
New Media Centre
Old Road, Warrington,
Cheshire WA4 1AT

Name _____

Age _____

Address _____

Post Code _____

T _____

M _____

Email _____

Proposed wedding date _____

Terms and conditions apply. No cash alternative. Lymm Life cannot be held liable for any of the prizes.
For a full list of the terms and conditions for the Lymm Life Bride of the Year Competition please write to: Lymm Life, c/o Orbit News Ltd, New Media Centre, Old Road, Warrington, Cheshire WA4 1AT or email info@lymm.life.
Entrants may be contacted with information or carefully selected commercial opportunities from Orbit News Ltd or agents on their behalf. If you do not wish to be contacted with offers and opportunities please indicate by ticking the box.

Lymm Life Bride of the year

ONE lucky couple have the opportunity of a life time to walk away with prizes worth almost £3,000 towards the cost of their wedding day in this easy to enter competition.

Using the adjacent form simply fill in the missing word and your contact details or alternatively email your details with the missing word to info@lymm.life titling it Lymm Life Bride of the Year competition.

The winner will receive a photographic album and pictures to the value of £1,000 kindly donated by Andrew Collier Photography, a wedding dress worth £1,000 kindly donated by Puure Bridal and 15 per cent off the cost of venue at the Lymm Hotel, plus dinner bed and breakfast for two nights prior to the wedding total value £900.

The winning bride will also feature on the front cover of Lymm Life magazine.

The lucky winner will be drawn from a hat and the Editor's decision will be final.



Image Credits:

Wedding gown:
'Vicky', by Alfred Sung @ Puure of Lymm.

Photography:
Andrew Collier Photography.

Hair:
Anna Warburton.

Makeup:
Danielle Deitch

topnotch
events

Wedding Planning
Venue Dressing | Table Linen
Chair Covers | Floral Designs
Balloons

*Whatever you've dreamed of,
we'll make it happen*

Call 07787 522 200
www.topnotchevents.co.uk

**Looking for the
Perfect Wedding?**



Contact Stockton Heath Travel
Wedding and Honeymoon
Holiday Specialists

01925 269400
or call in to see us at
80 London Rd, Stockton Heath

NATURAL FOCUS
PHOTOGRAPHY



www.naturalfocusphotography.co.uk
01925 753766 - 07790 282367 - 07900 151326

Karate black belts awarded



FIVE Members of Lymm Gendai Martial Arts Club, Lee Wright 2nd Dan, Kay Fletcher 1st Dan, Ellie Fletcher 1st Dan, Christian Birchall 2nd Dan and Dave Tovell 2nd Dan, are pictured showing their respective certificates in Shotokan Karate.

All attended a recent brown and black belt course and were successful in obtaining their black belt grading.

In recognition of the progress that they have made in the art of Karate, Sensei Dave Shipton said: "I am very proud of them all, They have trained very hard to obtain their black belt grading".

They have all been training with Lymm Gendai Martial Arts for a number of years. The club is run by Sensei Shipton at Lymm High School.

He is a 5th Dan with years of experience and is respected by all who train with him.

Joining the club has shown to build children's confidence, self awareness and respect for others.

'A room with a view'

High Legh Park Golf Club offers the perfect venue for wedding receptions.

The function room offers an excellent view over the golf course to the Cheshire countryside and beyond and can accommodate up to 100 people dining and up to 200 in the function room and bar area for an evening buffet celebration.

There are first class facilities for entertainment and relaxation and the room can be booked for any day of the week.

The catering facilities offer excellent food with packages to suit all budgets and requirements while staff will do everything possible to ensure that you have a perfect day.

For further information and to arrange a viewing please contact Martin Cooper on 01565 830012 or email mcooper@highlegmpark.com



PRIMROSE HILL NURSERIES

Now is the time to bring in your Hanging Baskets for refilling or order new baskets for the summer!

Caring Family Business

Open 7 days a week

Warrington Road, High Legh, Knutsford, Cheshire WA16 0SQ

Telephone 01925 752635

HIGH LEGH PARK GOLF CLUB

The Perfect Venue

to celebrate Your Wedding





Upto 100 people dining • Upto 200 people in the function room and bar area

For further information and to arrange a viewing please contact Martin Cooper on
 Tel: 01565 830012 Email: mcooper@highlegmpark.com www.highlegmpark.com
 High Legh Park Golf Club, Warrington Road, Knutsford, Cheshire WA16 0WA



FOREST

PREPARATORY SCHOOL

Open Day

Saturday 26th March 10am-12noon

- Pre-Prep Department offering vibrant, caring environment, where learning is purposeful and fun
- High academic standards
- Happy working atmosphere
- Small classes
- Listed in The Sunday Times Top 100 Prep Schools 2010



Moss Lane, Timperley,
Altrincham, Cheshire
WA15 6LJ

Tel: 0161 980 4075
Fax: 0161 903 9275

Email: headteacher@forestschool.co.uk | www.forestschool.co.uk

School's strong family values

FAMILY values and discipline are important codes of practice at Forest Preparatory School - an independent co-educational school rich in tradition and where excellent pastoral care is built on a knowledge of every child as an individual.

With its "open door" policy, the school forms strong links with parents and excellent two-way communication takes place between home and school.

The school has an excellent reputation for preparing children for state and independent grammar schools.

There is before and after school care provided for the working parent and a comprehensive list of after school activities offered to the children.

Although the school is not selective at infant level, Forest has great expectations and, as a result, the aspirations of the children are high, with great achievements occurring in and out of the classroom.

The pupils are renowned for the standard that they achieve musically and in the sporting arena and for their polite and well-mannered behaviour when taking part in a myriad of out-of-school activities and events.

Are you Seeing Red?



Before treatment

IPL Vessels Removal is accepted to be one of the most successful treatments for unwanted facial veins, red face, flushing and Rosacea by Dermatologists throughout NHS.

All people blush, either with embarrassment or after spicy food and alcohol. But for some people such facial flushing has turned into a life-long nuisance and suffering.

Rosacea is a chronic condition which is more common in fair-skinned people and runs in families.

Unfortunately, for many sufferers, the biggest problem is not physical, but psychological. This condition has a dramatic impact on their self-confidence and self-esteem causing sufferers to avoid public contact and social engagements.

Laserina based in Sale offer Free consultation and guarantee satisfactory result for those who are a right candidate for the treatment.

They have an extensive medical experience and hold advanced qualifications in Laser/IPL treatments.



After treatment



the
LASERINA
clinic

- Hair removal
- Vessels Removal (Rosacea Treatment)
- Instant Slimming Packages
- Lipomassage by Endermologie
- Ultrasonic Deep Skin Cleansing
- Inch Loss Body Wraps
- Non-surgical Face Lift

Results guaranteed
Experienced medical staff
Late and weekend appointments.

Book your free consultation
0845 833 0667

WWW.LASERINA.CO.UK

2 Oaklands Drive, Sale, M33 7NS
(near M&S on Washway Rd)



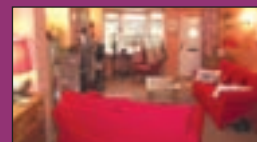
OPEN 7 DAYS A WEEK, ACCOMPANIED VIEWINGS OUT OF HOURS

Featured residential properties this month are:



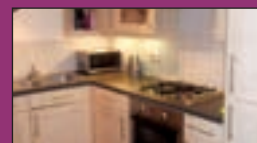
Massey Brook Lane, Lymm £239,950

Delightful cottage with many character features.
Spacious living accommodation, 2 bedrooms.
Potential for 3rd bedroom.



Crossland Mews, Lymm £129,950

2 bedroom ground floor apartment.
Spacious lounge/dining room.
Well presented, easy and economical to maintain.

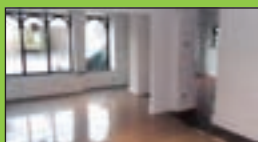


Albany Road, Lymm £160,000

2 double bedrooms, spacious lounge and
kitchen, garden room and study
Off road parking. Opportunity to extend.



Featured commercial property:



Booths Hill Road, Lymm £325,000

820sq ft (76.17sq m) of retail space plus basement.
1716sq ft (159.25sq m) of accommodation space.
Extensive parking area.

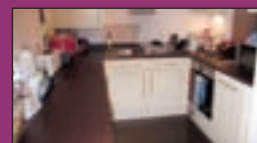


First-time buyer or buy to let opportunity:



Victoria Gardens, Latchford Village £65,000

Ideal starter home or with letting potential
of c.£450 per month
1 bed apartment in small modern block.



Extensive database of clients looking for rental properties. Our rates are competitive and transparent. Contact us regarding private and serviced rental apartments.

24 The Cross, Lymm, WA13 0HU | 01925 759042 | www.egertonsstates.com
Email info@egertonsstates.com

May Queen annual meeting

THE annual general meeting of Lymm May Queen Committee takes place on Tuesday, March 22 at Lymm Youth and Community Centre at 7.30pm.

All positions on the committee are subject to re-election annually although most of the present committee are willing to continue in their present roles.

In addition, there will be a need for volunteers before and during the May Queen festival and anyone interested in helping can attend the meeting or contact the committee by emailing lymmmayqueen@yahoo.co.uk

Monies raised at last year's festival has now been distributed to the following local charities: Lymm Clothing Charity, Lymm Youth Club, The United Reformed Church, Lymm HS gardening venture and St Mary's Pre-school.

New supervisor

NEW supervisor of St Mary's Pre-school, Lymm, is Lynn Smith who was previously acting supervisor and has worked for the organisation for six years.

She said: "I have a vested interest in ensuring St Mary's operates to its best capabilities as - like most of the staff - my children both came to St Mary's too. That's what makes it so special as we are all mums ourselves."

The pre-school has been running for more than 30 years. In recent years the outdoor area has been improved to allow the children to grow their own vegetables.

Play the answer for childrens childhood problems

WHEN Jane Fay goes out on the road on business, her 'toolkit' consists of an artist's easel and paints, clay, musical instruments and a sand tray with toys.

For Jane, a Lymm resident for more than 10 years, is a practitioner in Therapeutic Play, registered with Play Therapy UK.

She has set up a new practice in Lymm and is able to offer her service to parents and schools around the Warrington area.

Play therapy has been found to be effective for many children - particularly young children where a "talking therapy" approach may not be appropriate.

Recent campaigns, like the Targeted Mental Health in Schools campaign, and The Children and Young People's Mental Health Coalition have highlighted the need for early intervention for children with behaviour or emotional problems.

Drama, movement and therapeutic storytelling can also be involved in Jane's approach, but the important thing is that the children choose what

they would like to do in their sessions.

This type of therapy does not need to involve talking, as the therapeutic work is through play. It is appropriate for the 3-17 age group.

Children who may respond to play therapy include those not realising full potential, at risk of being excluded from school, bullies and the bullied, hyperactive or suffering from ADHD, phobias, stress or anxiety, the disabled and those with a long-term illness or displaying frequent outbursts of anger, quarrelling or in the process of being adopted or fostered.

Jane is currently involved with the Targeted Mental Health in Schools project in Warrington. She can be contacted at therapy4children@yahoo.co.uk or by calling 07703 661126.



Bid to unlock answer to multi-million pound problem

AN ingenious way to stop wheelie bins going missing - and save local authorities hundreds of thousands of pounds a year - has been devised.

The Oasis Bin-Loc is simple to install and operate, making the bin

impossible to remove, and has an attachment that prevents anyone accessing the contents.

Some local authorities are spending up to £0.25million a year replacing stolen or damaged wheelie bins and Merseyside Fire Brigade reckons the cost of putting out wheelie bin blazes costs taxpayers around £1.3million a year.

The system comes in two forms: A simple bracket fixed to a wall and a free-standing node that locks bins together in a waste station for communal areas in social housing areas. The bins can be unlocked by a caretaker.

Recyclable and residual waste will be kept in separate stations, thus encouraging residents to recycle more.

Huge savings can be made by councils as the Bin-Loc:

- * Eradicates wheelie bin theft.
- * Controls the spread of waste from damaged or upturned bins.
- * Prevents wheelie bin fires. Keeps wheelie bins in one secure location.
- * Stops the risk of identity theft from wheelie bins.

The Oasis Bin-Loc, which has been invented and patented by social enterprise company Prescot Oasis,

replaces old, heavy and cumbersome bin shuts.

Prescot Oasis, a social enterprise business that uses its profits to transform deprived communities through jobs, training and business development, came across the idea after asking residents at a communal block where they had been doing landscape gardening if they could suggest improvements to the area where they live.

The residents complained about missing or vandalised wheelie bins and Oasis Project Director Colin Hill set about finding a solution. After extensive enquiries he discovered there was no product available and began the process of inventing the Bin-Loc.

Mr Hill said: "We believe our Bin-Loc system provides a cost-effective answer to wheelie bin theft, fires and identity theft, as well as providing a cost-saving and environmental solution to communal waste disposal."

The Bin-Locs are made in Prescot and Prescot Oasis hopes to set up a factory in the area to manufacture and tailor the product for individual local authorities.

Oasis Engineering

Quality as Standard

Professionally Designed, Engineered, Finished, Installed

- Free Quotation
- Bespoke design
- Electrically operated gates
- Choice of finishes: Satin or Galvanised

Manufactured and installed by our own craftsmen

Phone: 0151 493 0098

Prescot Oasis Centre 10-14 Kamble St, Prescot, [L34 5SQ] | www.prescotoasis.org.uk



Sign of the times

LOCAL councillor Ian Marks is calling on the police to remove unnecessary signs.

Cllr Marks said: "These large blue police signs have been up for years but I have never understood what they were for. The wording 'Police Enforcement Area Ahead' suggests there are other areas, which are not enforcement areas! This is not the case.

"Although signs may be put up in good faith for a particular purpose, there comes a time when we are getting too much clutter and signs should be removed if they no longer serve a purpose.

I have spoken to a senior police officer and he is going to see whether they can be taken down. I welcome this approach and I hope they are able to take some action."



Bedding plants to help building project

THE Lymm Guides, Brownies and Rainbows and 3rd Lymm Scout Group are preparing to sell Bedding Plants to help with their fund-raising for a building to replace the old Scout hut on Pepper Street, which is a recycled World War II shed.

Scouting and Guiding are uniting their efforts and resources to fund one new, jointly owned building.

One third of the anticipated building costs have been raised and the Guides and Scouts intend to raise the remainder by grants and fundraising.

They hope that with the support of the people of Lymm they will soon be able to start building!

Look out for the bedding plant forms delivered with this month's edition of Lymm Life.

THE BARN OWL

01925 752020

A Traditional Country Pub Situated on the Banks of The Bridgewater Canal, Agden Wharf, Warrington Lane, Lymm, Cheshire, WA13 0SW

Serving 7 Cask Ales & Traditional Home Cooked Food

BOOK A TABLE FOR 4 PERSONS FRIDAY OR SATURDAY EVENING

(Each person to purchase 2 courses from the Main Menu) And Receive a Complimentary Bottle of Wine

Entertainment at The Barn Owl

26th March - Pete Valentine as *GEORGE MICHAEL*
 30th April - *VICUS*
 28th May - *FREDDIE MENSAH*
 12th June - *JAPANESE VINTAGE MOTOR CYCLE SHOW*
 25th June - *GARY SETTERFIELD as ELTON JOHN*
 30th July - *ABBA TRIBUTE with ABBA FUSION*

To Book Tel: 01925 752020 or visit our website at www.thebarnowllynn.co.uk

Springtime

2 for £20.00

Westland Aftercut Lawn Feed & Conditioner 285sqm

£11.99 each

Save £3.00
NORMAL PRICE £14.99

Scotts Evergreen Complete 160sqm

£11.99 each

Save £3.00
NORMAL PRICE £9.99

Phalaenopsis Orchid

£6.99 each

3 for £9.00

Zonal Geranium
13cm pot

£3.49 each

Offers available from 4th April until 15th May 2011 or whilst stocks last. Subject to availability. Prices correct at time of print.

High Legh Garden Centre
 High Legh • Knutsford • 01925 756991
www.strikes.co.uk

TRADITIONAL SUNDAY LUNCHES

2 OR 3 COURSE FIXED PRICE MENUS

A choice of 4 starters and main courses and an extensive pudding list. Two courses £10.95, all three £13.95.

Friday 11th March 12 Strings, a wide range of acoustic music will be played from 9pm.

We have a unique Lymmopoly board, a great game to play with friends.

Spread Eagle, 47 Eagle Brow, Lymm, Cheshire, WA13 0AG
 Tel 01925 757467 Email spreadeagle@jwlees.co.uk

BE YOURSELF

A tragedy from history

A TRAGIC story from history has emerged as a result of Lymm Life's recent article on how Oughtrington Hall - now Lymm High School - was used as a hospital for undernourished children during World War 2.

Memories were stirred for Mrs Doris Bonner, of Rush Green Road when she read of the Frankenburg family, who lived at Oughtrington Hall during the period 1938-46.

She started looking through family records and unearthed a tattered letter linking her own family with the Frankenbergs.

Sydney Frankenburg was a company director in Salford and his wife, Charis, was an authority on childcare, writing several books on the subject and having a lifelong interest in improving the lives of women and children in inner city areas.

The couple were involved in running the Greengate Hospital and Open Air School at Salford - a hospital for children suffering from



Legendary head, Joe Canney

Rickets.

At the outbreak of war, Charis, by then a widow, decided to move the school to her home and for the whole of the war shared Oughtrington Hall with more than 40 youngsters aged under five, a matron, nurses and other staff.

One of her sons, Miles, won a pig at the local church fete, decided it needed a mate and bought a sow. The inevitable happened - and soon Oughtrington Hall housed a pig farm as well!

Tragedy struck when Miles, a captain in the 4th P.O.W Gurkha Rifles was shot and killed in action in Burma on May 13, 1944 - the day after his 21st birthday.

The Lymm Life article reminded Mrs Bonner that her uncle, Bill Roberts, used to work for the Frankenburg family.

The old letter she found was from Charis Frankenburg, dated only two months after her son's death.

It reads: "This is to confirm that I have made over to William Roberts the half-share of the pigs at Oughtrington Hall that formerly belonged to my son, F. Miles Frankenburg. All the pigs now belong to William Roberts, though, for convenience, I will continue to make applications in my name for their food, petrol, etc.

"It is understood that William Roberts continues as before to look

after the pigs in my time as well as his own.

"I have made this gift in token of my son's affection for the recipient and for his loyalty to and friendship for me."

Mrs Bonner also discovered she had a photograph of Miles, in uniform, taken two months before his death.

She also has an early aerial picture of Oughtrington Hall - by then Lymm Grammar School - and a picture of Joe Canney, legendary headmaster of the school, who appears to be making a speech at what could be the opening of the school's first swimming pool.

Mr Canney is generally credited with persuading the former Cheshire Education Authority to buy Oughtrington Hall when Charis Frankenburg put it on the market after the war.

He had the vision to see that the old grammar school site - now the Scholar's Green estate, off Grammar School Road - would eventually be too small. The rest, as they say, is history.

One member of the Frankenburg family is still following the story with interest.

Ursula Kennedy, Miles' younger sister and the only girl of Sydney and Charis' four children, now lives in North Hampshire.

She said: "I remember Bill Roberts very well. He was with us throughout the war, looking after the pigs and the garden and I think he cooked for the children and staff of the hospital as well. I had forgotten that my mother



Miles Frankenburg.

had given him half the pigs.

"It is ironic that this interest in Oughtrington Hall's wartime history should surface at the same time as news of the recurrence of Rickets in today's children due to lack of exposure to sunlight.

"The very reason that Greengate was an 'Open Air' hospital and school was that it was known that sunlight was important in the development of the bones of young children and the formation of vitamin D in those bones.

"Those hoop like legs that we have seen on TV. recently were not new to me, there were some equally bad with us; they recovered and their legs straightened. I wonder how many of those children are still living in the Salford area now?"

Inadequate restoration from water damage

So you had one or more burst pipes in your home/business premises during the recent freezing temperatures, and you reported the subsequent damage, caused when the thaw occurred and water leaked from your pipes, to your insurers.

Your insurers will have appointed their loss adjusters to come to visit you to assess the damage and they may also have contacted their preferred restoration company to come and commence drying out procedures.

On the other hand, many policyholders are still, two months after the damage occurred, still waiting to see a loss adjuster due to excessive volumes of work and inadequate numbers of loss adjusters. This, however, is possibly the beginning of the problems.

The secret now is to make sure that the premises are dried properly, and that the damage is reinstated properly.

We have come across, over the years, many cases of restoration "experts" installing dehumidifiers, heaters, etc. and drying out only the surfaces and internal finishes (ceilings, partition walls) to premises.

Many restoration "experts" instructed by insurers and their loss adjusters are franchise operations and in some cases the franchisees' do not have a great deal of experience, coupled with, sometimes, a lack of adequate education.

We have been involved in many cases where water has leaked upstairs, and penetrated the lower storey. It is not rocket science that this water has passed through the intermediate floor which, in the upstairs room, would be made of timber floorboards or water resistant chipboard laid on top of timber floor joists, to which the downstairs ceiling is attached.

Similarly partition walls are, in modern buildings, constructed of a layer of plasterboard attached to each side of a timber frame.

When water passes through the intermediate floor or runs down a partition wall, it is absolutely necessary to remove the ceiling to dry the intermediate timber floor joists, and to remove a least one side of the partition wall to ensure that the timber frame work is dried out properly.

Similarly when water penetrates a suspended timber floor at ground level, it is necessary to ensure that the sub-floor void is dried out properly and the timber is treated.

If this work is not carried out, there is every possibility that dry rot may develop in the concealed areas which should have been exposed and dried properly, and this will create a bigger problem in the future.

The insurers' contractor networks do not always provide the policyholder with a copy of the specification for work which has been agreed, and sometimes the

necessary work is not specified properly thus potentially creating future problems. The policyholder should insist upon seeing what work is to be carried out before allowing the insurance company's contractor to do any work.

It is absolutely necessary to ensure that concealed areas are exposed by removal of finishings, and that you received a drying out certificate from the restoration company employed by your insurers.

These problems will not occur on cases where Cherry and Griffiths have been employed because we look after our clients' interests by ensuring that repairs are carried out properly, so as not to cause future problems.

If you believe that you have any such problems involving your insurers or their restoration or building contractors, please do not hesitate to contact us as it is never too late to request our assistance.





CHERRY & GRIFFITHS

SUPPORTING YOU ALL THE WAY

Cherry and Griffiths

08448 223 623

CLAIM CONSULTANTS & INSURANCE LOSS ASSESSORS

Household buildings & contents

Commercial buildings, machinery & stock

Business interruption

High net worth

Antiques and fine art

FLOOD | FIRE | THEFT | STORM DAMAGE

PEACE OF MIND FOR THE POLICY HOLDER

Motoring

Electric car scores well on safety

THE first ever crash test on an electric car carried out by Euro NCAP - the European New Car Assessment Programme - has allayed safety fears about the new vehicles.

A Mitsubishi i-MiEV supermini was awarded an overall score of four out of a possible five stars.

As a result, crash test experts believe five star protection is attainable for future electric cars.

Edmund King, the AA's president, welcomed the test result.

He said: "This i-MiEV sets a benchmark in safety that other electric vehicles will have to achieve. From the point of view of future buyers, the success of this crash test will dispel much of the worry about what happens when an electric car is involved in a significant crash."

The same 4-star rating applies to the Citroen C-Zero and the Peugeot iOn, both of which are structurally identical to the Mitsubishi i-MiEV and have the same interior fittings and levels of safety equipment.

Crash testers' chief worry was how well the car's batteries stood up to the impact and the effectiveness of cut-off switches in insulating the high-voltage battery. Euro NCAP observed that no electrical or fire hazards were detected during the testing of the i-MiEV.

Euro NCAP has recently crash tested four other new cars and awarded stars as follows: Dacia Duster (small off-road 4x4) 3 stars; Mitsubishi ASX (small family) 5 stars; Nissan Juke (supermini) 5 stars; Hyundai ix20 (small MPV) 5 stars.



Three-in-one car unveiled

VOLVO have unveiled the V60 plug-in hybrid - which they claim features the best properties of three different car types in one, single attractive sports wagon.

Three buttons on the centre console give the driver access to either an electric car with a range of up to 50km, a high-efficiency hybrid with carbon dioxide emissions averaging just 49g/km or a muscular, fun-to-drive car with acceleration from 0-100km in just 6.9 seconds.

Save money by driving slower

AS fuel costs soar, millions of motorists are driving more slowly on motorways to try and save money.

Some 59 per cent of all drivers say they are reducing speeds to cut fuel consumption - and among women drivers, the figure rises to 65 per cent.

Drivers are now paying more than £10 more per tank of diesel than a year ago, and more than £8.40

more per tank of petrol, according to one survey.

Sticking to the speed limit, especially on motorways is one of the most effective ways to cut fuel costs. Cruising at 80mph is not only illegal, but it uses up to 25 per cent more fuel than driving at 70mph.

Experts say that sticking to the 70mph limit on motorways can save

£500 a year on fuel.

Will motorists who say they will drive slower actually do so? The evidence suggests they are doing. Speeds on local motorways appear to have dropped in the last 12 months - although of course there are still plenty of those drivers who appear to think the speed limits only apply to other people!



UNIPART
CAR CARE CENTRE

**FREE Local Pick-up
& Drop Off Service**



AUTOSAFE
Quality Assured



Agden Park Motors

Park Garage A56, Agden Brow, Lymm

5 Star
workshop facilities
for servicing and repair



Over 300
tyres
at competitive prices!



MOT Testing
petrol & diesel



BODYSHOP
01925 752235

BIG ENOUGH TO COPE . . . SMALL ENOUGH TO CARE!

AIR
CONDITIONING
REGAS/SERVICE

Contact ALLAN or GEOFF on 01925 752447

Shop Local

Welcome to our special feature which is aimed at encouraging our readers to support local businesses. Any local business wishing to feature in future editions please contact us on 0800 955 5247. Please mention this publication when responding to an advertiser.

Lymm Osteopathic Practice

Established 1979

SUZETTE PULMAN, N.D. M.R.N. D.O.

Registered Naturopath & Osteopath

DARREN HAYWARD, B.Sc. (Ost)

Registered Osteopath

We are both registered with The General Osteopathic Council (G.O.Sc.)

Open Monday to Saturday

Tel: 01925 752264

The Rise, 16 Grammar School Road, Lymm WA13 0BQ
(Easy Access Road Parking)

Registered with all major insurance companies

Mobile Spa Spring Offers!

Mother's Day Pamper Packages
Mother & Daughter Make-Over Package
Gift Voucher's Available

Full range of beauty and holistic treatments
All in the comfort of your own home
Appointments 7 days a week, day or night

Call, email or see website today for further details

Tel: 07985 599 533

www.tigerlilytreatments.co.uk

info@tigerlilytreatments.co.uk



adcott opticians

Sale

eye local

Upto 50% off selected frames

At Adcott Opticians we have a wide range of discontinued frames from half price.

Suitable for prescription sun glasses, or just a spare pair.



14a The Cross, Lymm WA13 0HP

mail: opticians@adcott.net
web: <http://opticians.adcott.net>
tel: 01925 757075



Cutting Edge

Family, Friendly, Unisex Hair Salon

Sharon and her team provide quality hairdressing for both men and women in a friendly salon with easy free parking. Sharon provides gentlemen's and boys cuts through to ladies and girls hairdressing including a full range of colour treatments.

Now selling Bed Head products

- Full head foils inc. Cut & Finish from £59
- Bridal Hair & Party Hair from £25
- Cut & Finish from £23
- Gentleman's hair cut from £5
- Children's hair cut from £7

Ring to make an appointment 01925 752735
Ample free parking 77 Whitesands Road Lymm WA13 9JU

REEDHOUSE



Kennels & Cattery

Refurbished kennels fully centrally heated/airconditioning
Please call and view anyday between 3pm and 5pm
New home care service available
Dog walking facility Large spacious cattery
Have a look at our new website: www.reedhousekennels.co.uk
Please Call Alan or Alison on 0161 941 5699
Gorse Lane, Warburton

Lymm Electric & Hardware

EST 1874

**Electrical Goods
Repairs • Rewires
Alarms • Security Lights**

NICEIC approved electrical contractors

Dyson/Vac repairs & Service

All work guaranteed

01925 755252

12 Bridgewater Street, Lymm, Cheshire

To promote your business in our shop local feature from just £50 per month contact James Bryan 01925 631592

Boost for community centre

RETIREMENT home developers McCarthy & Stone have provided a £2,000 boost for Oughtrington Community Centre.

McCarthy & Stone has been granted planning permission to build 38 one and two bedroom Retirement Living apartments and communal facilities at the Booths Hill Road site in Lymm.

Deborah Bond, Regional Marketing Manager for McCarthy & Stone, said "We are delighted to have been granted planning permission for a much needed Retirement Living development in Lymm. Locally, there is a real demand for retirement accommodation and this new development marks a substantial investment in the area."

"To celebrate this welcoming news, we donated £2,000 to the Oughtrington Community Centre with whom we have a longstanding engagement with."

Construction will begin on the new development in June 2011, with first occupations anticipated in July 2012.

Picture: Marketing Manager Deborah Bond and Chris Butt, Associate Director from the Planning Bureau are pictured presenting a cheque to Joyce Penlington watched by local councillor Pam Marks.



Su Williams with Princes Trust members at Lymm High.

Pupils join 'bag free' campaign

LOW Carbon Lymm - the village group set up to encourage residents to reduce their impact on the environment - has enlisted local schoolchildren to help its cause.

The youngsters, members of the Princes Trust at Lymm High School - are helping in printing on linen bags to be handed out free of charge to shoppers on a "bag free Saturday" planned in Lymm in early May.

Local resident Su Williams worked with the children as they applied transfers to some 200 bags supplied by Warrington Borough Council.

Low Carbon Lymm has the support of local shopkeepers who will encourage customers to re-used plastic bags or use the purpose made shopping bags.

A spokesman for the group said: "We hope the bag 'giveaway' will make a bag free village move a step nearer to reality."

More details can be found at www.lowcarbonlymm.org.uk

Heatley VI

TALES of dedicated service to the rich and famous and members of the British aristocracy were enjoyed by Heatley VI.

Guest speaker Donald Lodge told how from working-class beginnings in Warrington, his career took him to sumptuous residencies in Canada and stately homes in the UK. His work included being a butler, valet, chef and chauffeur to well-known stars of the stage and screen, and many are featured in his book which was on sale to members.

Mr Lodge judged the competition and awarded first prize for a pair of silver napkin rings belonging to Brenda Topping. He was thanked by Zena Morgan.

President Liz Wellbelove reminded members of future events such as a county meeting in Winsford and a quiz organised by Little Bollington VI on April 4. The 65th birthday party will be at Statham Lodge on April 16.

Ann Russell

THE funeral has taken place at Walton Lea Crematorium of Ann Russell, aged 72, of Statham Avenue, Lymm who died on February 1 in St Rocco's Hospice, Warrington.

Mrs Russell was a keen indoor bowler and gardener and enjoyed antique fairs and walking her two dogs. She is survived by her husband, Bob, sister Margaret and brother-in-law David.

Funeral arrangements were by John Burrows and Sons of Lymm.

Established 1878
John Burrows & Sons
 Independent Family
Funeral Directors
 M. G. Tandy
 J. A. Tandy
 16 Higher Lane, Lymm
 Tel: 01925 752501

Meet your MP

David Mowat

David Mowat, MP for Warrington South, holds regular surgeries throughout the constituency. If you would like to arrange an appointment to discuss an issue of concern to you please e-mail him at david.mowat.mp@parliament.uk or telephone **01925 231267**.



David Mowat
 Member of Parliament for Warrington South
www.davidmowat.org
Produced by David Mowat MP, House of Commons, London SW1A 0AA

twentyfourseven
 design and print ltd



Special Offers

- 500 Full Colour Digital Business Cards **£35.00**
(Buy 1 set, Get 1 set free!)
- 100 A3 Full Colour Posters **£38.00**
- 500 A6 Full Colour Double Sided Flyers **£50.00**
- 10,000 A5 Full Colour Flyers **£248.00**
(Pay for 1 side, Get the other printed for free!)
- 60" x 40" Full Colour Posters **£12.00**

Subject to VAT where applicable

t. 01925 240 247 e. info@247print.net
a. The New Media Centre, Old Road, Warrington, WA4 1AT

CLASSIFIED

Call 0800 955 5247 to advertise

ACCOUNTANCY & BOOKKEEPING

APPEGATE & CO licensed and regulated by the AAT to engage in public practice in Accountancy, Book-keeping, Payroll, VAT, Self Assessment. Tel: **01928 739996/07803 218343. 2 & 8 Collinson Court, Frodsham WA6 7PN.** (08/11)

LYMM TAX SERVICES

Are you a business in need of a new accountant?

New chartered accountancy practice opening in Lymm to serve local small businesses

Low rates, high standards

Accountancy, tax, VAT, payroll and bookkeeping

Contact **jane@lymmtax.co.uk**
Tel 07759 051788 (08/11)

AIR CONDITIONING

CLIMATE CONTROL BY WARRINGTON based 4 Seasons, for offices, shops, surgeries, schools, homes and conservatories like yours! Installed in a day guaranteed 5 years. Keeping you cool when it's hot and warm when it's not. **www.4sac.co.uk 01925 756620** (09/11)

BATHROOMS

The bathroom Refurbishment Co.
We can create the Bathrooms of your dreams
One Warrington based Company
One Job From start to finish
Unique 3D virtual CAD design system
Please visit our website
www.bathroomrefurbishment.co.uk
Please Ring Wayne
01925 826 828 or 07976 574 828 (09/11)

LYMM KITCHEN & BATHROOM PROFESSIONAL INSTALLATION. Ceramic wall & floor tiling. For free estimates and advice contact **Rob Evans on 01925 752623 business or 07763 770408 mobile.** Est 2002. Local references provided (09/11)

DM DEVELOPMENTS
Design, supply & installation of quality kitchens and bathrooms
Complete package includes:
Plastering • Tiling • Flooring • Joinery
Property maintenance and renovations - period properties a speciality
Free no obligation quotations.
Fully insured tradesmen.
Call: 07939 446998 or 01406 837171
www.dmdevelopments.com (08/11)

BUILDING SERVICES

BIG DIG Groundworks
Flagging, Block Paving, Garden walls, Fencing, Patios, Drives, Foundations. For free estimates call Web: 07954 563 266 or Tel: 0151 424 5463
www.bigdiggroundworks.co.uk (08/11)

BRICKLAYER AVAILABLE for garden walls, pointing etc. Tel: 01925 755441 Mobile: 07966 491624 (09/11)

DM BUILDING - All types of building and property maintenance work undertaken. Extensions, patios, tiling and plastering. For a free quotation call Derek on 07912 033601 (08/11)

CARPETS, CURTAINS & INTERIORS

CURTAINS, CARPETS, VINYLs, blinds, wall paper, top brands including Harlequin, Jane Churchill and Casadeco. Made to measure by friendly knowledgeable staff. Free carpet uplift and removal with any new carpet purchase. **Xross Interiors, The Cross, Lymm Tel 01925 758298 or email xrossinteriors@live.co.uk** (09/11)

CARPETS, CURTAINS & INTERIORS

CUSTOM-MADE curtains and loose covers. All accessories supplied and fitted. Made-to-measure blinds. Our fabric or yours. Tel: **Orchard Soft Furnishings 01925 756388.** (12/12)

CARPETS, CURTAINS & INTERIORS

Paul Bains Flooring Solutions Ltd
Carpets, Wood, Vinyl, Laminates
Domestic & Commercial Supplied & Fitted
Family business covering all aspects of flooring including domestic & contract locations
Uplifting of old flooring can be arranged
Moving of furniture by arrangement
Limited disruption from start to finish
Check website for previous installations
www.paulbainsflooringsolutionsltd.co.uk
Office: 01925 758835
Mobile: 07973 376224 (07/11)

CARPET CLEANING

A1 STAINBUSTERS: Fully guaranteed carpet and upholstery deep dry cleaning. Clean & dry in only ONE hour. Quotes for both commercial and domestic. Contact the Local expert **John Latham on 01925 205210 or 07765 314080** (04/11)

SAFE CLEAN: SAFE ORGANIC CLEANING. Specialists in cleaning all leather and fabric upholstery, rugs, carpets and curtains in situ. Ask about our new organic allergy relief system, Guardsman stain protection plans and carpet repairs. **Richard Vaal on 0808 144 8178** (01/11)

SIMPLY THE BEST CARPET CLEAN YOU WILL EVER have. Cleaners UK Ltd. Est 23 yrs. Have your carpets & sofas beautifully deep cleaned leaving them fresh smelling & colour restored. Latest & best methods. Dry/steam. Professional, reliable & affordable. For more info call Neil Riley on 01925 264989/ 07831 336060 www.cleaners-uk.net (012/11)

CENTRAL HEATING

GAS SAFE REGISTERED ENGINEER. Andy Gas of Lymm, specialist in: Boiler upgrades, servicing, repairs to all domestic heating and gas appliances. Professional service. Tel **Andy on: 07753 838129 or 01925 753712.** (09/12)

CHILDREN'S ACTIVITIES

TUMBLE TOTS is the leading national physical play programme for children, classes available in Knutsford Hale & Bowden. We can be booked for private parties. Contact **Jane on 07812-144450. www.tumble tots.com/sale** (15/11)

CHILDREN'S THERAPY

JANE FAY, REGISTERED PTUK PLAY Therapist for children with behaviour or emotional problems, sleeping problems, anxiety, withdrawn, frequently angry, suffered bereavement/loss, ADHD, on autistic spectrum. Tel **07703 661126 www.playtherapy4children.co.uk** (09/11)

CLEANING SERVICES

arleys angels
• Spring Clean Specialist
• Presenting your home for sale
• Moving house
• After building work cleans
01925 266834
... because you're worth it! (09/11)

CLEANING SERVICES

SIMPLY THE BEST CARPET CLEAN YOU WILL EVER have. Cleaners UK Ltd. Est 23 yrs. Have your carpets & sofas beautifully deep cleaned leaving them fresh smelling & colour restored. Latest & best methods. Dry/steam. Professional, reliable & affordable. For more info call Neil Riley on 01925 264989/ 07831 336060 www.cleaners-uk.net (012/11)

COMPUTERS

Having Trouble With Your Computer?
Running too slow?
Want to upgrade... go wireless?
Call for experienced engineer
Tel: 07974 448 165 or 01925 751 546 (03/12)

DELIVERY SERVICES

FURNITURE FERRY LIGHT REMOVALS. Collections arranged from Ikea, Costco and other stores, garden centres, auctions etc. You choose, you buy, I deliver - SIMPLE. Reliable, inexpensive service. Tel: **Matt 07970 178 333 or 01942 732768. www.furnitureferry.co.uk** (05/11)

TnM Couriers - specialists in urgent UK same day deliveries, international and UK next day services available, contract work undertaken, parcels to pallets, no job too small or too big, competitive rates. Call **01925 639029.** (09/11)

ELECTRICAL CONTRACTORS

PAUL LEWIS ELECTRICAL SERVICES. For extra sockets/lights, main board upgrades to full rewires, no job too large or small. No call out fee. All work guaranteed. Tel **01925 758337 or 07966 386806.** Est 24 years. (08/11)

EVERGREEN ELECTRICAL CONTRACTING. NICEIC approved contractor. For lights and sockets to rewires, fuse-box upgrades. Qualified electrician. All work is to the latest IEE wiring regulations. No job too small. Most major credit and debit cards accepted. Tel: **David on 01925 724219 / 07971 407022.** (06/11)

TRUST PROPERTY ELECTRICAL SERVICES. NICEIC Part P Approved Contractor. All Electrical work undertaken. Inspection & Testing & PAT Testing. All work certified & guaranteed. Call **Tim on 07754409906 or 01925 601055** (03/11)

EQUESTRIAN

LYMM RIDING SCHOOL. Learn to ride with friendly atmosphere, group lessons or private. Horses/ponies well schooled. Lessons from £10, we offer tests with pony club cert, please ring for more details. Training for pony club. **Rebecca Bennett RegAI. 01925 750435. Mob 07778 866006.** (12/12)

WANTED, EXPERIENCED LADY RIDER to help exercise and school horse during the day. Also occasional horse sitting duties. Call **01925 752520.** (08/11)

EQUESTRIAN SUPPLIES & ANIMAL FEEDS

STABLES SADDLERY. EST. 1964. Good stock of all equestrian supplies and animal feeds. Lots of interesting and unusual equine and canine collectables. Tel: **Barbara Williams on Lymm 752762.** (08/11)

FIRES & FIRE SURROUNDS

Quality Fireplaces at Affordable Prices
WARRINGTON FIRE SURROUNDS
Fires, Fireplaces, Marble Best Prices
Quality Value Service Guaranteed
01925 417731
www.warrington-fires.co.uk
8 Lovely Lane, Warrington (follow signs for hospital) (09/11)

FIRES & FIRE SURROUNDS

Sharmans of Lymm
Wood burning stove & open fire Installation.
Fireplaces & hearths designed & built
Cleaning Tents & Awnings
Linen Supplied & Fitted
Sewing & Alfing Cheats.
Free consultation
01925 751403 / 07752 760100
jane@sharmansoflymm.co.uk
www.sharmansoflymm.co.uk (08/11)

GARDENING SERVICES

A F GARDEN SERVICES
REGULAR MAINTENANCE
TURFING, SOFT LANDSCAPING
CLEARANCES, POWER WASHING
HEDGE PRUNING
07796 818 686
0161 928 1722
www.afgardenservices.co.uk (06/11)

LYMM BASED
Beechwood Industries Ltd
Does your garden need a complete makeover or just good management?
Free Assessment
Free Consultation
Landscape Design
Construction
Plant Care
Maintenance
Contact Adam Halford on
07749 253 308
www.beechwoodind.com (09/11)

GARDENING SERVICES

FOUR SEASONS GARDEN SHOP. Excellent selection of perennials, shrubs, bedding, hanging baskets and much more! Excellent quality and even better prices! Free parking! Near Northwich CW8 2EB. Call **07792313460** (07/11)

J C SLAVIN
Landscapes & Garden Maintenance
Flagging • Driveways • Tree/Hedge Pruning
Garden Clearance • Fencing • Landscaping
01925 756 839
Mob: 07599 747 373 (08/12)

J D S
LANDSCAPE & GENERAL BUILDING SERVICES
Garden Design • Driveways
Patios • Garden Walls • Fencing
Decking • Resin Bond Driveways
See website for examples
Tel: 01925 754883 Mob: 07515 907735
www.jdscreate.com (04/12)

LAWN DRAINAGE AND SOIL AERATION. No trenches, no drainpipes, no digging, no repairs, no hassle. If this interests you Contact **Bob Harper 01925 266852 or 07952 608701.** (19/11)

M J NEEDHAM LANDSCAPES Award winning with over 15 years experience. All aspects of landscaping, specialist in bespoke construction. Qualified design service available. Contact **01925 825 645 or 07888 730 383** (09/11)

NEED HELP IN YOUR GARDEN?
All types of garden services from only **£10**
Professional, reliable service with 20 years experience
Call **Richard 07802 512263 or 01925 750418**
www.randrtreeservices.com (03/11)

SIMPLY GARDENS CONSULTANCY offers maintenance and design advice; maintenance schedules; planting plans; expert plant selection; on-site training. Regular or occasional maintenance can be arranged. Call **Graham on 01925 766873 or email gard.cott@btinternet.com** (13/12)

CLASSIFIED

Call 0800 955 5247 to advertise

GATES

Village Gates
SPECIAL OFFERS NOW ON
Manufacturers and installers of quality timber gates
villagegates.co.uk
01925 766629 or
Mob 07588 457145
Charnock Road, Culterh WA3 5SH

(07/11)

SIMPLY THE BEST CARPET CLEAN YOU WILL EVER have. Cleaners UK Ltd. Est 23 yrs. Have your carpets & sofas beautifully deep cleaned leaving them fresh smelling & colour restored. Latest & best methods. Dry/steam. Professional, reliable & affordable. For more info call Neil Riley on 01925 264989/07831 336060 www.cleaners-uk.net

(12/11)

HANDYMAN

Handyman Services
Home, Office & Garden
Gutter Cleaning, Repairs & Replacement
Welding Repairs & Fabrication
Fascias, Soffits & Windows
Patio & Driveway Cleaning
All Garden Work, Flagging, Fencing & Turfing
Interior & Exterior Painting
Plumbing & General DIY
You Name It - No Job Too Small!
Tel Neil: 01925 757905
Mob: 07813 201850
handymanserviceslymm@hotmail.co.uk

(05/11)

HAIR & BEAUTY

PROFESSIONAL MOBILE hairstylist, creative cutting, colour/correction, including foiled highlights. Tel: Lorraine 01925 755441 / Mob 0786 7910805.

(09/11)

Mobile Beauty Therapist Phoebe Elizabeth, Facials, Manicures, Pedicures, Aromatherapy Massages, Waxing, Pamper Parties, all in the comfort of your home Tel 07932 990 031, visit www.PhoebeElizabeth.co.uk

(08/12)

HYPNOTHERAPY

MICHAEL MAHONEY clinical hypnotherapist for IBS, Stress, Anxiety and many other problems. Medical Research project experience, BUPA Service Provider. For FREE information sheet please email TimelineServices@aol.com or ring 01925-658322 www.healthyaudio.com

(06/11)

IRONING SERVICES

Carol's Ironing services
NEXT DAY PICKUP & DELIVERY SERVICE
Lymm
Tel: 01925 767945
Mob: 07979 948197

(07/11)

KITCHENS

LYMM KITCHEN & BATHROOM PROFESSIONAL INSTALLATION. Ceramic wall & floor tiling. For free estimates and advice contact Rob Evans on 01925 752623 business or 07763 770408 mobile. Est 2002. Local references provided

(13/11)

LOCKSMITH

CHESHIRE LOCKSMITHS LTD UPVC Door Specialist. Non Destructive Entry Service. Free Quotations. Lymm Based Business. Contact Tony 07774 805 588.

(14/11)

JEWELLERY

evans & co
Jewellers & Goldsmiths
Jewellery Workshop
39 London Rd, Stockton Heath, Warrington, WA4 6SG
Quality repair, remounting, design work and setting finished to a high standard.
Loose certificated diamonds and gemstones supplied.
Stockists of fine contemporary British Swiss and German jewellery.
Tel: 01925 269292

(11/11)

OPTICIANS

ADCOTT OPTICIANS. State of the Art opticians in the heart of Lymm Village. Comprehensive sight tests and a wide choice of spectacles tailored to you, whatever your budget. 01925 757075

(10/11)

PAINTING & DECORATING

ANTHONY MASON PAINTER AND decorator Over 25 years experience. Neat, clean, reliable service. All aspects including papering, paint finishes, colour advice, signs and furniture painting. Tel. Tony Mason: 07962532811.

(08/11)

K.J.M PAINTERS QUALIFIED PAINTERS AND decorators with over 25 years experience in all aspects of interior and exterior work. Contact us on mob 07738 556 807 tel 01925 810428

(08/11)

N & K DECORATING SERVICES, High Class Professional Decorators, Paper Hanging Specialist, Internal and External works undertaken, Lymm Based Company, Free Quotations. Call 01925 759936 or 07783 068377.

(14/11)

STRIP 4 U, ALL STAIRCASES, WALLS, ceilings, Artex and woodwork professionally stripped. Quality painting and decorating service for interior/exterior. Fully insured clean and tidy. Call Carl for a FREE ESTIMATE on 01925 657469 / 07950 385904

(03/11)

PAVING

CULCHETH PAVING & GROUNDWORK. All aspects of paving and groundworks, flagging, blockpaving and drainage a speciality. Free no obligation quotes and advice. We are a friendly, local and specialist service. All work is guaranteed. Adrian 01925 763642 / 07725 510773. Scott 01925 762337 / 07903 626413

(04/11)

PAYROLL

WHY TRY TO BE A PAYE EXPERT? Watkinson Black can provide a cost effective payroll service, releasing you to concentrate on your business. For further details please phone: 01925 413210 or e-mail: info@warringtonaccountants.co.uk

(06/11)

PHOTOGRAPHER

BRENDA GREEN ABIPP Qualified professional photographer for People, Environmental Portraits, Weddings, PR, Special Occasions. Established 30 years. websites. www.brenda.green.co.uk www.brendagreen@demon.co.uk Tel.01925 753580.

(15/11)

PICTURE FRAMING

EDGAR ART & FRAMING, 19b The Cross Lymm. Picture framing, original art, jewellery, gifts and greetings cards. (Turn right at The Terrace Brasserie & Cafe and right again at the far end). Tel 01925 754700.

(06/11)

PLASTERING

B.E.A. PLASTERING OF LYMM
Full rooms plastered • Skimming
Bonding • Stud walls built
All repair work large or small
Tyroleaning/Rendering
Call David anytime on
01925 753966 or 07786 245068
www.beaplastering.co.uk
Member of the Guild of Master Craftsmen

(09/11)

PLASTERING

LYMM PLASTERING
Time served Tradesman
Clean and reliable
Fully insured
All areas covered
No job too small
Brian Gaffney
Tel: 07967 087034 (anytime)



(11/11)

PLUMBING

PB PLUMBING. All domestic and commercial work. Fitted bathrooms and tiling. Small jobs welcome. Free quotes. Fully insured. C&G qualified. Gas Safe Registered Call 0161 928 3253 or 07821 554867 or Freephone 0800 824 7747 or visit www.pbplumbing.co.uk

(07/11)

STEPHEN ROBERTS
Plumbing and heating, installations and servicing, boiler breakdowns, system upgrades free estimates
CORGI REGISTERED
Tel: 07830 331231

(04/11)

Plumbflow Ltd
Plumbing and Heating Services
All plumbing & gas installation/repairs
boiler replacement/servicing
bathrooms
Call today for a FREE QUOTATION
01925 468003
www.plumbflow.com



(06/11)

PIANO TUITION

VISITING 1-2-1 PIANO/KEYBOARD TUITION. Experienced open minded tutor. 100% exam pass rate (60%+ merit/distinction). Flexible informal approach. First 5 lessons half price till January 2011. Call Tony Hopkins (Dip ABRSM) 0161 973 0312 or mobile 07591 696388.

(08/11/11)

RE-UPHOLSTERY

TRADITIONAL and modern re-upholstery. Dining chairs, headboards, 3-piece suites etc. Customer's own fabric welcome. Tel: Orchard Soft Furnishings 756388.

(12/12)

SITUATIONS VACANT

GARDENER REQUIRED - seasonal hours max 2 days per week, would suit active retiree. Laskey Farm, Thelwall. 07785-262478.

(04/11)

To advertise
Call FREE
0800
955
5247

TAXI / PRIVATE HIRE SERVICE

Frazer's of Lymm
Private Hire Service • Good local rates
Reliable friendly service • up to five seater
Airport • Station Schools • Business or pleasure for OAPs
Contact Nigel on 01925 754426 or Mob 07812 674822

(12/12)

LARRY'S CARS. Airport transfers and private hire. All UK airports covered. Over 10 years experience in the Lymm area. Call 01925 755060. Mob 07989 342179 or email anthony.grace@btconnect.com

(08/11)

Silverfox Private Hire
Black, discreet 5-seat Chrysler Voyager for all occasions: Airport Transfers, Corporate Travel, Contract Work.
Any destination. Professional, reliable service Tel: 07964 194150

(06/11)

TREE SURGERY

R & R Tree Services
Tree Surgery • Pruning
Hedges • Ground Clearance
Professional Service, Fully Insured
Call Richard Jennings
07802 512263 or 01925 750418
www.randrtreeservices.com

(03/11)

TUTORS

CHESHIRE TUTORIALS offers tuition. Primary to 'A' level. Tutors especially primary maths, science and English welcome. Tel: 01925 758296.

(03/12)

FRENCH OR SPANISH TUITION for conversation, exam preparation or business. Learn a new language, improve your language skills or prepare for your GCSE or 'A' Level exams. Contact: Suzanne on 01925 759597 or 07790 965250

(09/11)

TV - SATELLITE

AERIALS 2000 of Lymm. No job too small. All work guaranteed. Aerials and satellites supplied and fitted. Sky subscriptions available. OAP reductions. Sky Digital / On Digital. 7 days a week. Tel: 01925 753427. Mobile: 07712 632315.

(12/11)

WINDOWS & GLAZING

NEIL COPELAND WINDOWS & Conservatories Ltd. Specialist in uPVC double glazing windows, doors, porches, conservatories, also fascias and guttering. FENSA registered. All work guaranteed. Tel: 01925 756138 / 07961 361550.

(12/12)

SP GLAZING for all your glazing requirements, double glazed units including failed and misted units, broken windows, mirror fixing. Kite marked to B/S - Time served glazier with over 30 years experience. For a friendly no obligation quote tel Sam Pendlebury on 01942 671859. Mob 07919 660296.

(04/11)

MOTORING SERVICES

CAR SALES

PARKVIEW CAR SALES
We buy and sell
QUALITY CARS
Best price paid
Telephone Peter on
01925 575737 /
07957 545479
23 Podgate Lane
Podgate, Warrington
Cheshire, WA1 3RS

(06/11)

Banner & Co

Independent Residential Sales and Letting Agent



PROPERTIES ARE MOVING!

Let us show you how we sell / rent our properties.

- As a privately owned company we have the ultimate incentive to sell/rent your property for as much as possible in the best possible timescale
- Open 7 days a week
- Advertising both locally, nationally and via the web
- Ask about our rent guarantee scheme
- Free market appraisal to sell or let your property

JOIN IN OUR SUCCESS

If you are considering moving now or in the future, or would simply like some advice regarding your property please contact Linda or Andy



01925 753636
www.bannerandco.com

Please note that if you have already instructed another agent, we would advise you to check any agreement you may have to ensure you are not liable for more than one commission by instructing us as your agent

