

Culcheth *Life*

FREE EVERY MONTH

Issue: 102
September 2011

Dootsons

Residential Conveyancing
Specialists

See main ad
Page 8

23 Jackson Avenue
Culcheth
0845 330 5700

CULCHETH • CROFT • GLAZEBURY • GLAZEBROOK • LOWTON • WINWICK AND SURROUNDING AREAS

Fun on the green

Page 3



**Farmers' Market
& Trade Fair**

coming to Culcheth



FarmersMarketsTaylorBusinessPark.com

All the latest news: www.culchethlife.com

Editor's Comment



Editor
Gary Skentelbery

Production
Paul Walker

Advertising
Freephone
0800 955 5247

Editorial
01925 623633

Email
info@culchethlife.com

Websites
www.culchethlife.com
www.frodshamlife.co.uk
www.lymmmlife.co.uk
www.warrington-
worldwide.co.uk
www.warrington.tv

Address
New Media Centre
Old Road Warrington
WA4 1AT

*Culcheth Life is published
monthly by Orbit News Ltd.*

*The contents of this magazine
are fully protected by copyright
and nothing may be reprinted
or reproduced without prior
permission of the publishers.*

*The publishers are not liable for
any statement made or opinion
expressed by third parties in this
publication.*

Printed by TwentyFourSeven

THE problem of what to do with young children who become bored during the long summer holidays is not a new one - although it has to be said that most pensioners today claim it did not exist in their school days when mothers did not go out to work!

But the world has changed and we have to accept it is a problem for many people today, whatever the reason.

So it is pleasing to be able to

Indoor bowls club seeks members

THE indoor bowling club at Culcheth Sports Club - the former Daten Club in Charnock Road - is on the lookout for new members.

Tuesday, October 4 sees the start of the winter season and the club meets every Tuesday.

Currently it has about 24 members, but a couple of years ago it had more than 60 members and the committee are anxious to try and increase membership back to that sort of level.

The sport provides gentle exercise during the winter months.

Anyone interested should contact secretary Edith Sutton on 01925 766363.

report that here in Culcheth, a police initiative has found a solution that appears to be working well.

The Police Young Citizen Award is an extension of the RESPECT (Reducing Exclusion Starting Positive Engagement with Children Together) scheme run by the Cheshire Police and Fire Services.

It involves persuading young people on holiday from school to get involved in community work, such as litter picking, gardening, helping the elderly, etc. Culcheth's popular PCSO Steve Dodd has been heavily involved locally and is very enthusiastic about it.

He tells of young children visiting Holcroft Grange old people's home to work in the garden and chat with residents, making similar visits to St Rocco's Hospice and helping police to deliver circular letters. The scheme

operates one day a week, although there is nothing to stop the youngsters doing extra work of their own initiative on other days and many of them do.

The youngsters, who all receive a certificate to show they have taken part in the scheme, are enjoying themselves. So are the elderly people they meet. They exchange experiences, the old folk recalling memories of the war and the children showing their elders how to use a mobile phone. One teenage boy plays draughts with a 98-year-old woman!

The scheme has been so successful it is hoped to repeat it next summer. We can only congratulate all concerned.

Beauty products demonstration

A DEMONSTRATION of beauty products ensured a good attendance at a meeting of Croft WI

Members were treated to make-up demonstrations, advice on skin care and sun related items and there was an extensive range of products on sale instigating long queues to buy.

Worthy winner

A raffle was won by Glynis Haines, a worthy winner, considering all the work she has put in to improve and maintain Croft Community Hall. At the end of the evening the distribution of free samples went down a treat and an enthusiastic vote of thanks was given by Susan Wallis.

Croft WI once again managed to win a cup for their float entry at the Croft Carnival and are already planning their theme for next year!

Joan Johnson won the competition for July and the meeting was closed by Anne Tansey, who had ably deputised in the absence of the President.

TaylorBusinessPark.com



business PREMISES
TO LET WARRINGTON



Contact: Paul Taylor or Paul Fairclough
Tel. 01925 763851 Fax. 01925 762805
Email. info@taylorbusinesspark.com

Financial Problems?

Commercial or Personal

For bespoke solutions contact local specialist

Roger White, MICM

For FREE Initial Advice

Strictly Confidential

01925 762497 or 07946 820299



Campbell Crossley & Davis
LICENSED INSOLVENCY PRACTITIONERS

culcheth tyres
and autocentre

01925 766380 / 766987

Your Local Autocare Centre

ANY MAKE, ANY SIZE, ANY VEHICLE

Run Flat Tyres, Tyres, Puncture Repairs, Brakes, Batteries,
Exhausts, Wheel Alignment, Steering, Suspension

FREE Vehicle Safety Checks
No Obligation Quotes with NO HIDDEN CHARGES

FREE local collect and return service (fully insured)

Taylor Business Park, Risley, Warrington WA3 6BL

Archery and rock climbing – on the village green!

ARCHERY and rocking climbing came to Culcheth on three Fridays in August - thanks to special events organised by Culcheth Methodist Church.

Hundreds of children and young people took part in a wide range of activities organised by the church.

There were opportunities to try rock climbing, archery, crafts and other activities at the church and on the village green.

The rock climbing - involving a temporary climbing wall - and archery took place on the green in the mornings and afterwards the church was opened for crafts and other activities.

David Soehren, youth work manager at the church said: "The activities provided opportunities for family fun and ongoing connection between the young people and our youth workers.

"We have had a great turn out and are hoping that we will be able to expand similar activities throughout the year and next summer."

Mr Soehren thanked the parish council for allowing use of the green.



Comedians from the past

COMEDIANS from the past -including Arthur Askey, Max Miller and Bud Flanagan - was the theme of a talk to Croft WI.

Speaker was Brian Halliwell on a return visit to tell members more about The Golden Age of Comedy.

Brian paid special tribute to Norman Wisdom, who was knighted at 90 years of age after 70 years in showbiz, and is still much-loved in Albania. He told how Norman was given his big break in comedy by Vera Lynn, who persuaded him to take her top of the bill spot one night.

At the start of the meeting president Doreen Clare welcomed 57 members and one visitor.

After telling some old jokes, Brian judged the competition for the best joke. First was Louise Geekie, second Jill Hillam and third Nicky Adams.

Future events include a walk from The Horseshoe pub on September 7 and a fashion show at Croft Memorial Hall on October 12.

The next meeting will be on September 21 when David Greaorix will speak on The History of Surnames. Visitors are welcome and further details are available by ringing 01925 764555.



oven
oven valeting service

oven.co.uk

...punctuality, pride, courtesy...

- Range & Aga Specialists
- Ovens & Hobs
- Extractor Hoods
- Microwave Ovens
- Traditional Stoves

LET US HELP - PHONE NOW

**01925
453377**

the UK's favourite oven cleaning specialists

China Rose Restaurant

The Finest Chinese Cuisine

Open 6 Days: Tuesday - Thursday 5pm-10.30pm
Friday & Saturday 5pm-12 | Sunday 4pm-10pm

Take Aways Available • Dining over two floors

Telephone: 01925 765 806

23 Common Lane, Culcheth, Warrington WA3 4EW

All major Credit/Debit cards accepted



New DIY store bucks the trend

A NEW household store name has appeared at Culcheth – thanks to the initiative of former Culcheth High School and Manchester University student Ric Davies.

He has quit his job as a sales and marketing director with a big-name IT company to launch Village Homes Stores – a re-born Culcheth DIY.

Ric has had a long and successful career in IT, first with National Nuclear Corporation at Risley and then with Digital Corporation – now Hewlett Packard – at Birchwood.

He decided that despite national chains like Focus DIY going bust, the time was ripe to buck the trend.

Said Ric: "My DIY efforts and

brand snobbery meant I spent a lot of money at big brand out-of-town DIY stores, which I had to travel to, then find the right parts myself, then queue to pay, and travel back, hoping I wouldn't have to return anything.

"Then I noticed I didn't benefit from their economies of scale by getting low prices on core products. Discussing this with friends they all preferred the 'local' store, where they listen to what you were doing, give impartial advice, and find your solution for you.

"Coincidentally Culcheth DIY was up for sale, so I decided to secure those traditional benefits as a base to which I could add professional

retailing standards and online ordering such as 'click & collect'.

"Big brand UK retailers have set high expectations for shopping experiences that everyone now expects from every store. These include bright and clean premises, wide ranges of stock, and good value pricing.

"If local stores can provide these in addition to their traditional customer focussed service by friendly, helpful and knowledgeable staff, and their willingness to take time with customers; then 'shop local' will be the conscious option for many more people.



"I certainly expect that to be the case in Culcheth – and then more stores will open in more villages that want the same."

M. J. NEEDHAM LANDSCAPES

**Award Winning
with over 15 years experience**

**All aspects of landscaping
Specialist in bespoke construction
Qualified design service available**

01925 825645 07888 730383

www.mjneedhamlandscapes.co.uk

Three Peaks conquerors

THREE men from Culcheth-based building company Rosedale Construction completed the gruelling Three Peaks Challenge to raise money for charity.

Steven Smythe, Mark Garner and Mark Smythe, climbed Ben Nevis in Scotland, Scar Fell Pike in Yorkshire and Snowdon in Wales in 23 hours, 40 minutes - just 20 minutes inside the 24 hour deadline.

They raised money for the NSPCC and Children with Special Needs.

Tapefox Ltd.

Quality Kitchens & Bedrooms FAMILY BUSINESS EST. 1982

Let us turn your dreams in to reality with one of our beautiful craftsman built kitchens

- NEW Petworth in frame available in 10 colours
- COMPREHENSIVE Range of High Gloss Colours
- Blum Soft Closed Doors/Drawers on ALL Kitchens
- All our Kitchens and Bedrooms are manufactured on the premises
- Free plan, Design and Quotation
- Supreme customer service, quality and value
- Kitchens and Bedrooms to suit all budgets

Culcheth Open: Tuesday - Friday 10am - 5pm
Saturday 10am - 4pm

St Helens Open: Monday - Thursday 8.30am - 4pm
Friday 8.30am - 3pm Saturday 10am - 1pm

14 Church Lane Culcheth **01925 766646** or Unit 11b,
Brindley Road (off Reginald Road) St Helens **01744 811687**

Village Home Store

DIY	Electrical	Plumbing
Tools	Kettles	Copper
Timber	Irons	Push-fit
Screws	Bulbs	Fittings
Garden	Decor	Cleaning
Pests	Paints	HG
Weeds	Brushes	Addis
Fencing	Fillers	Jeyes

www.villagehomestore.co.uk

- Click & collect
- Free local delivery (orders over £10)
- Equipment hire
- Dyson repairs
- Keys cut

Tel: 01925 766766

4 Church Lane, Culcheth WA3 5DJ

ANOTHER OUTSTANDING YEAR AT PRIESTLEY

**99%
OR ABOVE
PASS RATE
7 YEARS RUNNING**

**WELL DONE!
CLASS OF 2011**

**100% PASS RATE
IN 41 A-Level subjects**

**over 73% of A-Level
grades at A* to C**

**100% PASS RATE in all
BTEC NATIONAL DIPLOMAS**

**79% - High BTEC grades
49% Distinctions**

JUST SOME OF OUR BEST INDIVIDUAL SUCCESSSES

SADE BATES
WOOLSTON
A*AA
MANCHESTER

ADAM MILNER
SIR THOMAS BOTELER
A*A*A*A
MANCHESTER

JESSICA BAXTER
CARDINAL NEWMAN
A*AAB
MANCHESTER

SIMON NOLAN
WOOLSTON
AAB
LIVERPOOL

MARTIN BROWN
SIR THOMAS BOTELER
A*A*A*A
YORK

KAMIL ROPIAK
BIRCHWOOD
A*AAA
MANCHESTER

RACHAEL GALILEE
CARDINAL NEWMAN
A*A*AB
GAP YEAR

RACHEL SEWELL
FRODSHAM
AAAB
MANCHESTER

JACK HYNES
WOOLSTON
AAAA
MANCHESTER

SAM WHITEFORD
LYMM
AAAB
LIVERPOOL



JAKE WHITTAKER
CARDINAL NEWMAN
A*A*AB
OXFORD



AMY WHITE
CARDINAL NEWMAN
AAA
YORK



CALLUM MCLEAN
FRODSHAM
DD (BTEC) AC
LIPA



EMMA FOSTER
BRIDGEWATER
AAAA
LIVERPOOL



HAYLEY JONES
BRIDGEWATER
A*AAAC
SOUTHAMPTON



MATT BIRD
PENKETH
A*AAA
OXFORD



BEN PILLING
NEWTON
A*AAB
MANCHESTER



IAIN FINDLAY
BIRCHWOOD
A*A*A*B
SOUTHAMPTON



RACHEL JEFFERSON
WILLIAM BEAMONT
DOD (BTEC), D
LJMU



ROBIN BRASHAM
PENKETH
A*A*A*A*A
YORK

SIXTH FORM OPEN EVENINGS & GUIDANCE EVENTS

FOR STUDENTS WISHING TO START COLLEGE IN SEPTEMBER 2012

WED 9 NOV	5.30pm-8.30pm
THURS 10 NOV	5.30pm-8.30pm
THURS 17 NOV	5.30pm-8.30pm
SAT 19 NOV	GUIDANCE FORUM(only)
	10.00am - 1.00pm
THURS 2 FEB	6.00pm - 8.00pm

PRIESTLEY ◆◆◆ COLLEGE ◆◆◆

Loushers Lane, Warrington, WA4 6RD
Tel. 01925 415415 / Fax. 01925 413887
www.priestley.ac.uk



Limited places still available on some programmes for September 2011, phone 01925 415415 to book an appointment.
Bursaries now available - contact Admissions for details or see www.priestley.ac.uk



NEWCHURCH COMMUNITY PRIMARY SCHOOL

Invite you to a New Intake Open Afternoon

**Thursday 29th September
& Wednesday 12th October
at 1.30pm**



Preparing to fly...

Newchurch will give every child a flying start by working in partnership with parents, staff and the community to develop and celebrate well-rounded citizens who will contribute in a positive way to society.

We are proud of our school - find out why!

Telephone 01925 763427
Glebeland, Culcheth, Warrington WA3 4DX

Spotlight on

WELCOME to Culcheth Life's spotlight on education - with exam results for A levels and GCSEs now out, education is at the forefront of many minds - whether you are a student wondering what to do next - or proud/concerned parents wondering what should be the next step for your child.

One thing for certain is that it's never too late to learn, whatever your age and in today's modern world it is more important than ever to make the right decision - whether it be for your child's education or your own.

From choosing the right nursey and primary school, to the right secondary

school and beyond it can be a minefield of difficult choices.

Parents have a choice in choosing where they send their children - although first choices are not always available.

Endless

Then there is the choice between private and state education, colleges and universities - the list is endless.

With tuition fees kicking in next year it is more important that ever you make the right choice.

Here at Culcheth Life and our associated magazines we aim to help you make the right choice and to help

New Pre-school Provision

based at Croft Memorial Hall, Mustard Lane, Croft WA3 7DS



Croft Village Pre-School

Every child is unique

Opening Tuesday 6th September 2011

09:00-15:15 Monday to Thursday and 09:00-12:00 Friday
3 hour and 6 hour sessions available.

For more details telephone: 07805 716145

or email jan.cowley@yahoo.co.uk

(Ample parking at Croft Memorial Hall)



Culcheth Day Nursery Incorporating Early Birds Pre School

- Part-time and full-time places for children age 0-5 years
- Open 51 weeks a year 7.30am-5.30pm
- The highest standards of care and education
- A fully qualified and long standing staff team
- A fresh, varied and well balanced menu
- Established 12 years with excellent OFSTED reports
- A full foundation stage curriculum provided
- Early Years Foundation Stage Framework
- Nursery grants for all 3-4 year olds
- Childcare vouchers accepted - a saving in TAX and NI

Culcheth Link Club, Holiday Care & Breakfast Care

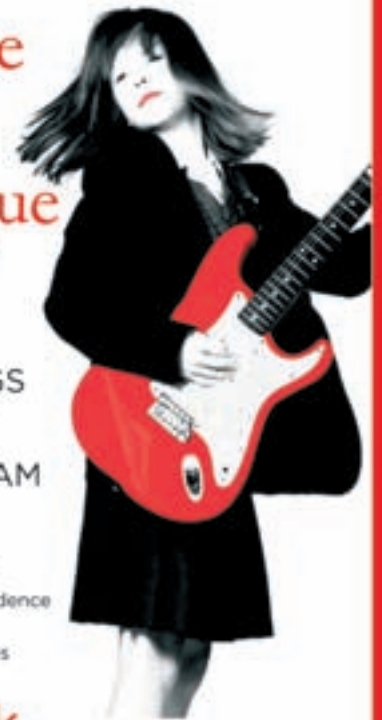
Professional care with the emphasis on fun
For children age 4-11 years
Collection from all the local schools

Book your holiday care now

For further details contact Deborah Byrne-Davies on
01925 767615

Warrington Road, Culcheth WA3 5HH

A Unique School, for Unique Pupils



OPEN EVENINGS

Wed 9 November 2011
Thur 19 January 2012

ENTRANCE EXAM

Wed 1 February 2012

- Now fully co-educational
- Small classes boost confidence
- 14 GCSEs, 16 A Levels
- 6 new science laboratories

ncgs.co.uk

NORTH CESTRIAN GRAMMAR SCHOOL
for Boys and Girls

Dunham Road, Altrincham, Cheshire WA14 4AJ
Telephone: 0161 928 1856



n education

with your child or your own education by highlighting a variety of education providers in the area. Schools and colleges who would

like to feature in a future feature can contact us by email at info@culchethlife.com or by phone on 01925 623630.



To appear in a future education feature call 01925 631592



Where Learning is Fun!

OPEN DAYS

Thursday 13th October & Tuesday 15th November at 2pm & 6pm

Culcheth Community Primary School is an excellent school situated on the same site as Culcheth High School with extensive grounds and superb facilities for sport and ICT.



"The quality of teaching is good and pupils make good progress. Pupils say how much they enjoy their lessons and that the topics they study are interesting and fun." Ofsted 2008

Our Open Days will be held on Thursday 13th October and Tuesday 15th November. We will be showing people round school at 2pm & 6pm with refreshments available.

It will be a chance to see our school at work and ask any questions you may have.

(If you are unable to make this date, please contact the school)

If you would like to come and visit our school, or you would like to reserve a place for your child, please ring the Headteacher, Mrs A. Smith

01925 764312

or visit our website at www.culchethprimary.co.uk

Open Evening

Thursday 6th October 2011



A "good" school (OFSTED 2009)

Arrival and registration 6.00pm



Specialist Schools and Academies Trust
"High attaining school 2010"
"most improved" school (2006 & 2009)

Headteacher presentation at 6.45pm and 7.30pm



74% five A* - C grades including English and Maths in 2010

(2011 results not available at the time of going to press)

**Warrington Road, Culcheth
Tel: 01925 767587**



DOOTSONS LLP

We are here to help when relationships break down

We can also help in advising you prior to a new relationship on how best to secure your financial position in the unfortunate event it does not work out.

We have been providing legal services to Culcheth residents for over 25 years and have built a strong reputation in this sensitive area of law.

We will provide you with clear advice delivered in a down to earth way and will provide clear information about the cost of the work involved.

We can assist you with:

- Divorce
- Separation
- Property Disputes (married or unmarried)
- Civil Partnerships
- Children Disputes
- Change of Name
- Pre-nuptial agreements
- Financial agreements prior to living together

Contact us to arrange an appointment with **Michele Wright**

A first half hour free interview or fixed fee interview may be available – please ask.

Free Car Parking For Clients

**For all your legal needs
CALL US 0845 330 5700
(calls charged at local rate)**

dootsons
SOLICITORS LLP
working for you, working with you

23 Jackson Avenue, Culcheth
CALLS AT LOCAL RATE
0845 330 5700
www.dootsons.co.uk

CULCHETH • LEIGH • ATHERTON

Green crusader lands at garden centre

The Green Crusader has just flown into a local garden centre from the Planet Environ and is on the hunt to find out what can be done to help make the world a cleaner, greener and healthier place to be.

The green super hero landed at Bents Garden & Home at Glazebury, Warrington, where he's looking for ideas from children, which will help improve the environment or make local communities a better place to be.

In 2007 Bents introduced their Five Green Footprints which promote Recycling; Water Efficiency; Healthy Living; Social Responsibility and Trading Fairly & Responsibly, and the Centre has now launched a new environmental campaign, specifically aimed at children.

Children are being asked to add ideas in the form of their own green footprints to the Green Crusader's

Wind turbine plan 'blown away'

PLANS for a 20.35m high wind turbine at a farm near Culcheth have been thrown out by borough planning chiefs.

The borough council's development management committee decided to refuse the application by Phillip Sharpe, of Lowes Farm, Kenyon Lane, Kenyon after officers said they believed insufficient information had been provided about the likely impact of noise on nearby residents.

Culcheth and Glazebury Parish Council had objected to the scheme, as had 58 nearby residents. But one resident had indicated support for the scheme which, he said, would supply the farm with renewable energy and reduce its carbon footprint.

The committee was told the proposed turbine would be in open countryside to the east of Kenyon Lane, in the Green Belt and more than 300 metres from the nearest dwellings.

Cheshire Show exhibits on display

NEWCHURCH WI craft group's exhibits for the Cheshire Show were on display at their monthly meeting in the Parish Hall - including Barbara Alldred's calligraphy, which had won full marks.

Also on display was Newchurch's scrapbook, kept for more than 50 years, and a petition in support of the borough's libraries, which members were asked to sign. Phyllis Longson donated a pretty pot plant for the president Sylvia Brown's table and the evening's tea hostesses were Celia Crowe and Jean Power.

The president welcomed everyone and reported on a successful outing to Duxbury when some 20 members had viewed a beautiful 13-acre garden developed over 30 years by George and Irene Owen.

Young soccer stars win sponsorship



TWO new under 7's teams at Culcheth Athletic are celebrating after landing sponsorship from a local firm.

Hunter Healey Chartered Accountants, of Culcheth, is sponsoring the new teams which have been entered into Warrington Junior Football League.

Team coach Neil Burlinson said: "We are looking forward to developing these young superstars of the future by improving their footballing ability, but ultimately our main ethos is to make it fun and enjoyable and to play football the way we believe it should be played."

Picture shows Alicia Flint and Nigel Healey, of Hunter Healey Chartered Accountants, with the team.

'Planet Environ' wall, located within the family area of the Fresh Approach Restaurant.

Matthew Bent, Managing Director at Bents Garden & Home said: "The children who visit us as part of our Ready Steady Dig initiative are always really enthusiastic to find out more about nature and talk about the environment so we decided to create a brand new initiative where they could share their thoughts and ideas. We thought it would be really good fun to have our own special character to lead the way and are delighted to be joined by The Green Crusader!

"Our footprints state that if we all take small steps then together we can make a big difference. We are hoping children will add their own green footprints to our 'Planet Environ' wall which will demonstrate all the little steps we can take to help our environment and make the world a cleaner, greener and healthier place to be!"



Fashion fund-raiser

CROFT WI are organising a fund-raising fashion show at the Croft Memorial Hall on Wednesday October 12.

Proceeds are to be split between Croft WI and the Memorial Hall.

'RigOuts' of Lodge Drive, Culcheth are providing the clothes while several members of the WI will be the models. There will also be light refreshments included in the price which is £8.

Tickets are available by calling 01925 766327 or from Rigouts.

UNSWORTH'S FUNERAL SERVICE



Independent family owned Funeral Directors
489 Warrington Road, Culcheth

Providing 24 hour personal care by Jackie Unsworth, Phil Done, Kevin Melling and Tim Hargreaves-Stead

Tel: 766006

The Gardening Guide

September...



- Now is an excellent time to choose & plant your new specimens for next year.
- Clear the lawn of any moss or fibre & feed with an autumn fertiliser.
- Reduce watering & feeding of houseplants ready for the winter dormant period.
- Pot spring flowering bulbs for indoor displays.
- Dig up any remaining potatoes before slug damage spoils them.

Always make sure your plants are well watered, even in this unpredictable weather!



www.bents.co.uk



HUNTER HEALEY

CHARTERED ACCOUNTANTS

- Professional, approachable, affordable
- Accounts preparation & tax returns for individuals & companies
- Bookkeeping, payroll & vat
- Capital gains & inheritance tax planning
- Business start up advice
- First meeting free of charge

Call Nigel Healey now on 01925 767222
Abacus House, 450 Warrington Road, Culcheth WA3 5QX
www.hunterhealey.co.uk

FREE - Parking 100 yards away at The Red Brick Inn
PACKAGE FIREPLACES FROM £399

NEW STOVE AREA WITH OVER 15 STOVES ON DISPLAY



FAMILY RUN BUSINESS TRADING OVER 25 YEARS

NO NEED TO CHANGE YOUR CARPET MADE TO MEASURE FIREPLACES - WE INSTALL ALL FLUE LINERS, CHIMNEY PIPES & CUPOLS OVER 2 FLOORS

Opening Times: Mon-Fri 9.30-4.30pm Sat 10am - 4.30pm Sunday Closed

STOVES FROM £399

www.elbfireplaces.co.uk
70 Twist Lane, Leigh, WN7 4DP
Tel: 01942 607250



Here's a thought:

Why pay more?

AWARDED THE UK'S BEST GARDEN CENTRE 2009, 2010, 2011 BY SCA

Up to **50% off** Housewares

From the 1st to 25th September you can save up to 50% on china, cutlery, glassware, cookware and small electricals in our first ever Housewares Event. Don't miss it!



www.bents.co.uk For beautiful living

Bents Garden & Home, Warrington Road, Glazebury, Warrington WA3 5NT. Telephone 01942 266300. Open 7 days and Bank Holidays, Mon-Fri until 5pm.

Celebrating 100 years of Guiding



GIRL Guides from Culcheth 'took over' part of Culcheth Linear Park to celebrate the centenary of Girlguiding - and present a veteran Girlguider with an award.

A heron carving was unveiled to mark the occasion.

More than 150 Rainbows, Brownies, Guides and Senior Section members were present, along with their Leaders and members of the Trefoil Guild.

The girls were also joined by County Commissioner Cat Skinner and regional Chief Commissioner Sue Lomas, who presented a Chief Commissioners Award to Barbara Smith, in recognition of more than 30 years service to Girlguiding in



Culcheth.

During the evening the Guides made bird feeders for the Linear Park feeding station while the Rainbows and Brownies enjoyed games and crafts.

After hotdogs the evening was completed by traditional campfire singing.

The evening was made all the more special for the girls by a visit

from a very friendly hedgehog - courtesy of the Friends of Linear Park.

Anyone who would like to volunteer with Girlguiding UK, or to put their daughter's name on the waiting list for any of the sections should contact Sara Isles, District Commissioner, by emailing sara.isles@btinternet.com

Margaret's Floral Dance takes first prize



CULCHETH & District Horticultural Society held their annual show at Newchurch Parish Hall.

Margaret Wiszowaty (pictured above) took first prize in the flower arranging class with her Floral Dance.

Also, pictured below, admiring some of the flowers on display (L-R) are Chairman Margaret Fearn, Nick Manning, Chris Parry, judge Philip Sayle and Kathleen Manning.



£40,000 fund to help local groups

A NEW £40,000 fund to help local voluntary and community groups based in the Culcheth area has been launched.

Groups in the Culcheth, Glazebury, Croft and Birchwood areas are set to benefit from the Biffa Landfill Community Fund.

It was set up by Biffa, the company which operates the landfill site at Silver Lane, Risley, in partnership with the Birchwood Endowment Fund.

The fund will be administered by Warrington Grassroots, Cllr John

Joyce's chosen charity during his Mayoral year, for which £20,000 was raised. Biffa has contributed £20,000 to the fund.

Cllr Joyce said: "This fund has been set up especially for the benefit of the small voluntary and community groups that make such a difference to the north of our town."

"They can apply for grants between £250 and £5,000 to help continue or strengthen the good work that they do."

Reward offered for missing Elmo

A HEARTBROKEN Culcheth family has offered a reward for the recovery of their lost cat, Elmo.

The 17-month old tabby disappeared from Claremont Road, Culcheth shortly after 8am on July 20.

Since then, his family has distributed 500 leaflets as part of their search to find the much-loved pet.

But although there have been some reported sightings, there is no sign of the cat.

Owner Sue McKenzie said: "Elmo is quite a dark tabby, although he has white under his chin. He has been neutered but was not wearing a collar."

"The family is missing him so much - we really would like to know about any possible sightings."

Anyone who can help should 01925 816288 or 07745 924499.



styles
chartered accountants

- Tax Planning
- Corporate Finance
- Audit & Accounts
- Management Accounts
- Business Development
- Business Sales & Acquisitions
- Forensic Accounting

Heather House,
473 Warrington Road,
Culcheth, Warrington,
WA3 5QU

Tel: 01925 761600
Fax: 01925 761601

Email:
mail@stylesandco.co.uk

THE STYLES FILES styles

Entrepreneurs' Relief update

Entrepreneurs' Relief (ER) is available to reduce the effective rate of Capital Gains Tax an individual pays to only 10% when they dispose of their (or part of their) business.

An unexpected but welcome measure in effect from 6th April this year is the doubling of Entrepreneurs' Relief from £5 million to £10 million over a lifetime.

This presents a tenfold increase in the allowance since its introduction in 2008 and means that the maximum tax saving offered by ER is £1.8 million, more than 22 times the £80,000 maximum of three years ago.

For those married or in a civil partnership, the savings presented by this relief can be as much as £3.6 million, a great incentive to structure your business so as to take advantage of it.

The steps are fairly simple, and well worth careful consideration by couples and owner-managers:

- admit a spouse or civil partner as a partner in an unincorporated business
- transfer shares in a family company to a spouse or civil partner, who would need to become an officer

- or employee of the company
- combine separate spouse or civil partner shareholdings of less than 5% into a holding of at least 5% in one name
- For larger owner-managed companies, consider: issuing a new class or ordinary shares with voting rights but no, or very limited, entitlement to dividends, and with capital rights on sale or winding up limited to par value, in order to increase the shareholding of managers with less than 5% interest
- Or try: Introducing a new management shareholding company, in which managers would receive a shareholding of at least 5% in exchange for their former direct shareholding of less than 5%

If you are considering selling your business and want more advice in this area, please contact one of the partners, Les Styles or Ian Lloyd, on 01925 761600.

Disclaimer: please note that the contents of our Culcheth Life articles are intended to inform rather than advise and you should always take professional advice before taking action.



If you would like more information on this or any of the previous subjects we have featured, please contact Les Styles or Ian Lloyd on 01925 761600.

The Styles Files are provided by Styles & Co 473 Warrington Road, Culcheth, Warrington WA3 5QU
For further details please telephone 01925 761600 or visit our website at www.stylesandco.co.uk

OPEN
DAY

Millercare

Mobility Specialists

On TUESDAY 11th October 2011

11am - 3pm

At Alford Sport & Social Club

Manchester Road, Warrington WA1 3NJ

RSVP - 01925 251212

- ✓ FREE Prize draw to Win a 3 Wheeled Walker
- ✓ FREE Advice & Support from Local charities

- ✓ FREE Buffet & Refreshments
- ✓ FREE Parking & Disabled Access

Products available on display are:

- Scooters
- Ramps
- Adjustable Beds
- Powerchairs
- Manual Wheelchair
- Rise/Recliners
- Arthritis Care
- New Range of Shoes & Slippers from SANDPIPER

15% DISCOUNT OFF 1ST PURCHASE IF YOU BRING THIS ADVERT WITH YOU

ACH GARAGE SERVICES

Repairs • Servicing • Bodywork • MOTs

Diagnostics - Car and Light Commercial

Petrol and Diesel

MOT Work • Tyres and Exhausts

Collection and Delivery Service

Breakdown and Recovery Service



Tel: 01925 815152 Fax: 01925 815142

www.achgarage.co.uk Email: achservices123@btconnect.com

Unit 11AA Trident Business Park

Daten Avenue, Risley, Warrington WA3 6AX

Genesis Shoes



**AUTUMN/WINTER STOCK
ARRIVING DAILY!**

Major brands including:

Tamaris, Lotus, Romika & Van Dal

New for this season are:

Rieker & Dorndorf

Tel: 01925 762463

60 Lodge Drive, Culcheth, Warrington WA3 4ER

www.genesisshoes.co.uk

**Free
Trial***

Begin your Kumon journey

Maximise your child's development with Kumon's tailored maths and English study programmes.

Contact your local instructor today

**Warrington Padgate
Study Centre**

**Lowton Study
Centre**

Cath Muscroft

01925 225960

*Enrol your child between 1 September & 31 October 2011 for a two-week Free Trial and begin your Kumon journey.



KUMON

Developing independent learners

Terms only. Please refer to our local study centres. Terms & conditions apply.

kumon.co.uk

www.palmsschoolofdance.co.uk

Venues in
Cadishead
&
Glazebury

Dance classes in ballet,
modern and tap from
ages 2.5yrs up



SCHOOL OF DANCE

07939 614406

**Vets
Now Open
to the
General Public**



(Tony Buxton MRCVs & Colleagues)

Please call for an appointment

Also Private Boarding for Dogs and Cats

All dogs exercised daily – special weekend rates

Tel: 01942 671215 Leigh Dogs & Cats Home

(Side of Greyhound Hotel) East Lancs Rd, Leigh

Save Money!

The Utility Warehouse provides over 350,000 customers in the UK with great savings on their utility bills, as well giving members access to lots of other savings, on everything from high street shopping to family holidays!

Some of the benefits:

- Reduce your household bills
- Save 25% just by shopping
- 'Free Global Calls'
- Exclusive member discounts
- Cheapest online shopping
- Reduce your bill further by recommending a friend
- Save money every day!

Would you like to save money on your everyday spending?

Join the Club!

Ask for details!

0800 955 5247

New Media Centre, Old Road,
Warrington WA4 1AT



**To feature your
business in this space
call the office now
and speak to one of
our friendly team
01925 631592**

Young cricketers win through to cup final

FOR the first time in its 12-year history, Glazebury Cricket Club's junior section has a team in a North Cheshire Cricket Association knock-out cup final.

The Under 15s team will play Kingsley at Glazebury's Hurst Lane ground on Sunday, September 4 starting at 9.30am.

Club officials are hoping local people will turn up in force to support the youngsters.

Glazebury reached the final by defeating Warrington side Rylands in a thrilling semi-final.

The team selected for the vital match is: Gerard Southworth (captain), Jack Barton, Harry Barton, Patrick Hutchinson, Alex Macarthur, Sam Hunt, (vice captain), Alex Ross (wicket keeper), Hakeem Dahou, James Blyth, Elliot Croston, Thomas Croston and Jonny Williams (12th man).

The rules of the competition state

that all players taking part in the final must have played in at least two previous rounds.

Glazebury's junior section has been one of the club's great success stories in recent years, largely due to the enthusiastic work of a dedicated team of coaches, led by Mike Durrington.

Leading members of the current senior teams include about 14 players who have come up through the junior section.

The 1st XI, which was promoted to the first division of the Cheshire Cricket Alliance last year, has acquitted itself well in the higher tier and still has a chance of a further promotion to the Meller Braggins Cheshire League.

Advertiser's announcement

Wasps – handle with care

THIS spring and summer have been quite dry - perfect for wasps! Over the next few weeks wasp activity will peak. A large nest resembles a huge intricate sculpture and may contain many thousands of workers along with the queen. Early in the spring it is possible to treat a small nest yourself as long as it can be accessed safely, but in later summer it is absolutely essential to have it destroyed professionally.

Adult wasps rely on the wasp larva (or grubs) to feed them a sugary excretion, when the queen stops laying eggs the food supply gets cut, and the wasps go foraging for anything containing sugary liquid - children's ice creams, soft fruit and even your pint! It's at this time that most stings occur and problem nests should be treated in advance.

Although they can occur almost anywhere, a great majority of wasp nests occur within roof spaces. A reputable pest controller **MUST, BY LAW**, inspect the loft space for open water tanks and bat roosts. This is in order to satisfy the legal requirements of the Wildlife and Countryside Act 1981 and the Control of Pesticides regulations 1986. It is also good practice to determine the position of the nest. Just because wasps are seen going under the eaves, don't assume this is the nest, it may be anywhere within the loft. For this reason the householder must be present to allow access for inspection. A lot of failed treatment attempts are due to lack of professional procedure, and re treatment may be necessary at extra cost to the homeowner. Disturbing or poisoning bats could result in fines of thousands of pounds, a simple check is all that's required.

Atlas Environmental Solutions, are a local pest control company based in Warrington. Technicians are fully trained and hold the latest Royal Society for Public Health qualifications, along with all necessary public liability insurance. For help and advice, please phone 01925 445222 or 07999 487925.

Email: enquiries@atlas 4u.co.uk and website; www.atlas 4u.co.uk

rated #1
full service digital
design agency in
warrington*

CARPE DIEM

WEB // DESIGN // VIDEO // + MORE

+44 (0)1925 299 842 www.carpe-diem.co.uk

RAR+
TOP 100
AGENCY 2010

LOWTON CARPETS & BEDS

1000'S OF CARPETS & 100'S OF ROLL ENDS

VINYL • LAMINATE • UNDERLAY
POLYFLOR LUXURY VINYL TILES

TEL: 01942 716769

Need a new bed?

WE DELIVER FOR **FREE**

ASSEMBLE FOR **FREE**

GIVE YOU A NEW
QUILT AND PILLOWS **FREE**

AND REMOVE YOUR
OLD BED FOR **FREE**

PLUS

**50% OFF
ALL BEDS**

**EXTRA
10% OFF
ALL
BEDS**



PLUS

many more offers in store

LOWTON CARPETS & BEDS

Call 01942 716769

Unit 21, Golborne Enterprise Park
(next to Kidglove Medical Practice)
Kidglove Rd, Golborne, WA3 3GR

Motoring

The car with a smile on its face

THE Corsa is Vauxhall's second best-selling model after the Astra and is a near-permanent fixture in the UK's top three best sellers' list.

Recently it has been given a makeover with many of the premium styling cues from other Vauxhalls, such as the Insignia, Astra and Meriva now features a signature chrome bar carrying the new Griffin badge.

It stretches across the front grille and, with a re-styled front bumper with a more prominent, wider lower grille has given the Corsa a smiling appearance.

Framing the Corsa's new face are "Eagle-Eye" headlamps, which have also made an appearance on the recently launched Meriva.

The units have a chrome finish and include daytime running lights as standard across the range. New chrome-finished fog lamps and housings complete the picture at the front of the car.

Complementing the Corsa's fresh look are five new exterior colours in

the range.

Vibrant new colours also dominate the Corsa's cabin, brightening the interior.

Also inside, is Vauxhall's new optional Touch and Connect multimedia system, which replaces the existing CD60 unit.

Touch and Connect uses a five-inch touch screen display featuring both 2D and 3D maps for the navigation system, as well as a CD/tuner, aux-in, USB and Bluetooth mobile phone connectivity.

Outside, the new Corsa benefits from new 16-inch alloy wheels on both SE and SXi models, while the 192PS VXR receives a new 18-inch alloy wheel, modelled on the design of the optional 20-inch wheel worn by the Insignia VXR.

Corsa's new appearance complements recent upgrades to chassis and powertrain.

With its fresh new look, it is now a very different car to the one on sale little more than a year ago. Before the

latest exterior and interior design changes were made, the Corsa had already benefited from a long list of significant upgrades to its chassis and powertrains. For example, certain ecoFLEX engines now feature Vauxhall's Start/Stop technology, which has reduced emissions on the 1.3 CDTi (95PS) ecoFLEX model to just 94g/km,

combined with fuel consumption of 91.1mpg on the government's extra urban cycle (80.7mpg combined).

Vauxhall's engineers have also made important revisions to the car's steering and suspension set-ups. Softer springs were employed in the front suspension, mate to an anti-roll bar with new bushes and an increased diameter, improving ride

and control characteristics.

Complementing this were revised damper setting all round, an optional re-tuned ESP system and enhanced steering geometry, ensuring that the Corsa remained as pleasurable to drive as it was economical to own.

The new Corsa range starts at £9995.

'Oldies' more likely to be Good Samaritans

OLDER drivers are much more likely than younger drivers to stop to help if they saw someone broken down at the roadside, according to a recent AA/Populus poll.

Almost one quarter of drivers would not stop to help as they would suspect that the breakdown was a con trick.

Participants were asked: "If you saw someone by the roadside (not a motorway) by a vehicle that looked like they had broken down, what would your reaction be?"

Sixty one per cent would stop if they felt comfortable it was safe and thought they could help - 65 per cent male and 55 per cent female.

Of those that definitely would not stop, 16 per cent were in the 18-24 age group and only 10 per cent over 65s.

Twenty two per cent think most people have mobile phones so can seek assistance themselves and 24 per cent would be concerned it was a con trick.

Londoners would be least likely to stop.

More affluent drivers would be more likely to stop than semi-skilled or unemployed drivers.

AA president Edmund King believes it is perhaps surprising that 61 per cent of motorists would stop.

He said: "Our poll shows that the 'Good Samaritan' is alive and well and driving along the highways and byways of Britain. On the other hand it is disappointing that almost 40 per cent don't feel able to stop.

"It is interesting that older drivers seem much more likely to stop to help other drivers."



CULCHETH BEER FESTIVAL

at Culcheth Sports Club (Dates)
Charnock Road, Culcheth

FOOD AVAILABLE

Fri 16th Sept
7pm to 11pm

Sat 17th Sept
Noon to 11pm

ENJOY A FANTASTIC COLLECTION OF CASK BEERS
(Complimentary soft drinks available for drivers)

Entry Ticket - £5

LIVE MUSIC

(Includes commemorative pint glass & programme of ales)

Organised by:
The Rotary Club of Newton & District Jubilee

All proceeds to go to Rotary Charity work



THE NEW MEDIA CENTRE
OLD ROAD, WARRINGTON WA4 1AT
01925 240247
info@247print.net

twentyfour seven
design & print ltd

10,000 A5 FULL COLOUR £248.00
PAY FOR 1 SIDE GET THE OTHER SIDE PRINTED **FREE**

500 FULL COLOUR Digital Business Cards
£35.00 (Buy 1 set, get 1 set free)

100 A3 FULL COLOUR POSTERS
£38.00

60" X 40" FULL COLOUR POSTERS ONLY £12.00 EACH

ALL PRICES ARE SUBJECT TO VAT

CLASSIFIED

Advertising: 0800 955 5247

BATHROOMS

The bathroom Refurbishment Co.
 We can create the Bathroom of your dreams
 One Warrington based Company
 One Job from start to finish
 Unique 3D virtual CAD design system
 Please visit our website
 www.bathroomrefurbishment.co.uk
 Please Ring Wayne
01925 826 828 or 07976 574 828

CARPET CLEANING

A1 STAINBUSTERS: Fully guaranteed carpet and upholstery deep dry cleaning. Clean and dry in only ONE hour. Quotes for both commercial and domestic. Contact the Local expert **John Latham FREE on 0800 137772 or call 07765 314080**

SAFE CLEAN: SAFE ORGANIC CLEANING. Specialists in cleaning all leather and fabric upholstery, rugs, carpets and curtains in situ. Ask about our new organic allergy relief system. Guardsman stain protection plans and carpet repairs. Call **Carey Randall on 01925 815724**

SIMPLY THE BEST CARPET CLEAN YOU WILL EVER have. Cleaners UK Ltd. Est 23 yrs. Have your carpets & sofas beautifully deep cleaned leaving them fresh smelling & colour restored. Latest & best methods. Dry/steam. Professional, reliable & affordable. Call **Neil Riley on 01925 264989/07831 336060** For more information www.cleaners-uk.net

CHIROPODY

KATHRYN GRACE AND ASSOCIATES, D.Pod.M, M.Ch.S., HPC registered Chiropractors/ Podiatrists, 25 years experience, offering friendly and professional footcare, also Gait Analysis. Care home contracts are welcome. Culcheth based. Tel **01925 762404** www.parkviewcentre.co.uk

CLEANING SERVICES

arleys angels
 • Spring Clean Specialists
 • Presenting your home for sale
 • Moving house
 • After building work cleans
01925 266834
 ... because you're worth it!

CLIMATE CONTROL

CLIMATE CONTROL BY WARRINGTON based 4 Seasons, for offices, shops, surgeries, schools, homes and conservatories like yours! Installed in a day guaranteed 5 years. Keeping you cool when it's hot and warm when it's not. www.4sac.co.uk **01925 756620**

COMPUTERS

AED COMPUTER SERVICES. For all your PC servicing requirements including: Hardware repairs / upgrades, Software / Operating System re-installs, Virus removal, basic training. Tel: **01925 766426**, mobile: **07870 260657**, email: enquiries@aed-cs.com, Web: <http://www.aed-cs.com>

DELIVERY SERVICES

FURNITURE FERRY LIGHT REMOVALS. Collections arranged from Ikea, Costco and other stores, garden centres, auctions etc. You choose, you buy, I deliver - SIMPLE. Reliable, inexpensive service. Tel: **Matt 07970 178 333 or 01942 732768.** www.furnitureferry.co.uk

TnM Couriers - specialists in urgent UK same day deliveries, international and UK next day services available, contract work undertaken, parcels to pallets, no job too small or too big, competitive rates. Call **01925 639029.**

DRIVING TUITION

MIKE PARKER ADI
 • Driving • Theory Tuition
 • Patient • Friendly • Reliable.
 • Pass Plus • Gift Vouchers
01925 767277 or 07791 622475

ELECTRICAL CONTRACTORS

PAUL LEWIS ELECTRICAL SERVICES. For extra sockets/lights, main board upgrades to full rewires, no job too large or small. No call out fee. All work guaranteed. Tel **01925 758337 or 07966 386806.** Est 24 years.

EVERGREEN ELECTRICAL CONTRACTING. NICEIC approved contractor. For lights and sockets to rewires, fuse-box upgrades. Qualified electrician. All work is to the latest IEE wiring regulations. No job too small. Most major credit and debit cards accepted. Tel: **David on 01925 724219 / 07971 407022.**

FIRES & FIRE SURROUNDS

Quality Fireplaces at Affordable Prices
WARRINGTON FIRE SURROUNDS
 Surround & Marble Only £299
 Quality Value Service Guaranteed
01925 417731
www.warrington-fires.co.uk
8 Lovely Lane, Warrington (follow signs for hospital)

GARDENING SERVICES

LAWN DRAINAGE AND SOIL AERATION. No trenches, no drainpipes, no digging, no repairs, no hassle. If this interests you **Contact Bob Harper 01925 266852 or 07952 608701.**
M J NEEDHAM LANDSCAPES Award winning with over 15 years experience. All aspects of landscaping, specialist in bespoke construction. Qualified design service available. **Contact 01925 825 645 or 07888 730 383**

GATES

Village Gates
 Manufactures and installers of quality timber gates
villagegates.co.uk
 For free quotes and advice call **01925 766629**
 Office Workshop and Showrooms at 10 Charnock Road, Culcheth, WA3 3SH

GUTTERING

A & E SERVICES. New gutters from £15 per Metre, Black white or brown. No Joints, No leaks. Repairs from £35. Call **01942 740517 or 07833 685134.**

HANDYMAN

LOCAL HANDYMAN for all those jobs you cannot get anyone to do. House maintenance, flat pack assembly, fence repairs etc. No job too small. **Phone Peter on 01925 762 645 or 07523 419 216.**

HEALTH

CL JONES LCSP (PHYS). Remedial massage and clinical hypnotherapist. Now back above Sainsburys. **30 Sundial House, Common Lane, Culcheth. WA3 4EH.** Call **07845 473467** day **01925 767979** eve.

HOME HELP

A & C HELPING HANDS. Help from someone you can trust. Cleaning, Laundry, Ironing, Shopping. We can help you to help yourself in your own home. Competitive prices, CRB checked. **Anne 07905 106898 Christine 07706 274847**

IRONING SERVICES

Carol's Ironing services
 NEXT DAY PICKUP & DELIVERY SERVICE
 CPS Centre (Above Sainsbury's)
 Tel: **01925 767945**
 Mob: **07979 948197**

ITEMS WANTED

WE BUY ALL GOLD & SILVER ITEMS. Best prices paid! Knutsford's busiest jewellers established 1980. **John Rees Jewellers, 91 King Street, Knutsford 01565 653 009.**

PAINTING AND DECORATING

LOCAL PROFESSIONAL PAINTER and decorator. Domestic and commercial work, competitive prices, free quotes and advice. NVQ and City and Guilds qualified. Call **Michael Caldwell** to discuss. **01942 682735 or 07908 089760.**

PAYROLL

WHY TRY TO BE A PAYE EXPERT? Watkinson Black can provide a cost effective payroll service, releasing you to concentrate on your business. For further details please phone: **01925 413210** or e-mail: info@warringtonaccountants.co.uk

PEST CONTROL

ATLAS FOR PEST CONTROL
 Rodents, Fleas, Bed Bugs all pests eradicated.
 Domestic and Commercial. Fixed prices. Prompt service.
SPECIAL OFFER
 Wasps nest treatment **ONLY £35**
 (includes checking the loft space)
 Your friendly, local independent.
07999 487 925 / 01925 445 222
www.atlas4u.co.uk

PLUMBING

PLUMB-IT. QUALIFIED LOCAL PLUMBER, 24 hour emergency call-out, no call out charge. All work guaranteed. For fast reliable service call **Jack 01942 510351** mob **07515 776390**

To Let

FULLY MANAGED CONSULTATION ROOMS including reception cover for rent at a busy practice in Culcheth. From £5.50 p/h. Ring for details **01925 766666**

TUITION

SPANISH LESSONS IN CULCHETH Daytime tuition in Spanish grammar for adults - beginners or revision. Experienced retired tutor; friendly relaxed lessons for singles or couples. Tel **01925 765 962** or Mob **07922 155 275**

TREE SURGERY

ROBERT WOOLSTENCROFT TREE SERVICES. Commercial and Domestic tree and Landscaping services. NPTC qualified, Safe Contractor approved and fully insured. Friendly and reliable local family business. **Contact Robert 01942 673736 or 07811 954065**

WINDOWS & GLAZING

LEIGH GLASS LTD FOR ALL OF YOUR GLASS requirements please contact Tel **01942 678440** Fax **01942 261728** email leighglass@hotmail.co.uk

SJ HESKETH WINDOWS. Failed and misted Double Glazed Units replaced. UPVC windows and conservatories. Soffits, fascias and guttering. All aspects of building work. Fensa Reg 18048. No job too small. Ask for Steve. Tel **01942 523538. Mobile 07767 828363.**

SP GLAZING for all your glazing requirements, double glazed units including failed and misted units, broke windows, mirror fixing. Kite marked to B/S. Time served glazier with over 30 years experience. For a friendly no obligation quote tel **Sam Pendlebury on 01942 671859.** Mob **07919 660296.**

The UK's best value Home Phone service
 GUARANTEED SAVINGS COMPARED TO BT
 ✓ The UK's cheapest line rental
 ✓ Unlimited free calls to UK and international numbers
 ✓ Unlimited free calls to other Club members
 ✓ UK landline calls up to 90% cheaper than BT
 For full details contact:
0800 955 5247
 New Media Centre, Old Road, Warrington WA4 1AT
 SAVINGS THAT REALLY ADD UP!
 THE UTILITY WAREHOUSE

more than just a smile!

www.samedaysmiles.co.uk

Unable to eat what you want?

Do you lack confidence?

Don't want to wear dentures?



from as little as
£199
per month*

permanent teeth in just one day!



0% finance available
**terms and conditions apply

It is now possible using modern implant techniques to achieve natural looking **permanent teeth in just one day**, allowing you to eat what you want, when you want and giving you a beautiful, confident permanent smile.

Local Clinic in Lymm

www.samedaysmiles.co.uk

SDS
same day smiles

Call one of our patient coordinators and book your **FREE** consultation on:



01925 393 740

what a difference a day makes™

*Rates correct at the time of going to press. 7.9% APR fixed for a 5 year term. An application is required and terms and conditions apply. Typical example for one fixed arch is approx. £15,950, requiring a £6049.84 deposit, followed by 60 monthly repayments of £199. Total amount borrowed £9,900.17. Total amount repayable on finance £11,940.07.

** 0% finance available for a 12 month term only, subject to terms and conditions. Full details available on request.